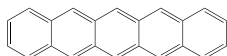


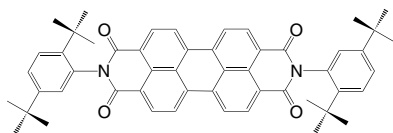
LT-S901 | Pentacene

Pentacene

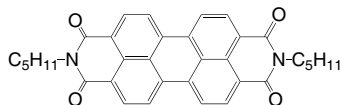
CAS No.	: 135-48-8
Grade	: Sublimed >99%
Formula	: C ₂₂ H ₁₄
M.W.	: 278.35 g/mole
UV	: 300 nm (in CH ₂ Cl ₂)
PL	: 509 nm (in CH ₂ Cl ₂)
TGA	: >290 °C (0.5% weight loss)

**LT-S902** | PDCDT*N,N'*-Bis(2,5-di-*tert*-butylphenyl)-3,4,9,10-perylene dicarboximide

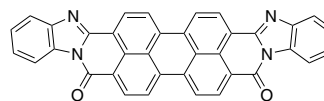
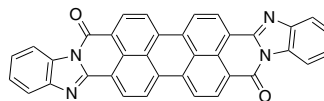
CAS No.	: 83054-80-2
Grade	: Sublimed >99%
Formula	: C ₅₂ H ₅₀ N ₂ O ₄
M.W.	: 766.96 g/mole
UV	: 524 nm (in CH ₂ Cl ₂)
PL	: 544, 574 nm (in CH ₂ Cl ₂)
TGA	: >350 °C (0.5% weight loss)

**LT-S904** | PenPTC*N,N'*-Dipentyl-3,4,9,10-perylene dicarboximide

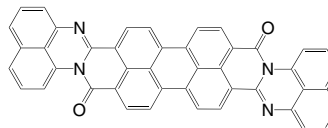
CAS No.	: 76372-75-3
Grade	: Sublimed >99%
Formula	: C ₃₄ H ₃₀ N ₂ O ₄
M.W.	: 530.61 g/mole
UV	: 523 nm (in CH ₂ Cl ₂)
PL	: 535, 573 nm (in CH ₂ Cl ₂)
TGA	: >350 °C (0.5% weight loss)

**LT-S918** | PTCBIBisbenzimidazo[2,1-a:1',2-b']anthra[2,1,9-def,6,5,10-d'e'f'] diisoguinoline-10,21-dione, with *cis* isomer

CAS No.	: 79534-91-1
Grade	: Sublimed >99%
Formula	: C ₃₆ H ₁₆ N ₄ O ₂
M.W.	: 536.54 g/mole
PL	: 414 nm (in CH ₂ Cl ₂)
TGA	: >420 °C (0.5% weight loss)

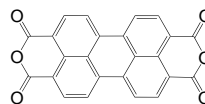
**LT-S919** | ADIDIAnthra[2",1",9"':4,5,6,6",5',10"':4',5',6']diisoquino[2,1-a:2',1'-a'] dipiperidine-12,25-dione, with *cis* isomer

CAS No.	: 6859-32-1
Grade	: Sublimed product
Formula	: C ₄₄ H ₂₀ N ₄ O ₂
M.W.	: 636.66 g/mole
PL	: 413 nm (in CH ₂ Cl ₂)
TGA	: >430 °C (0.5% weight loss)

**LT-S920** | PTCDA

3,4,9,10-Perylene-tetracarboxylic dianhydride

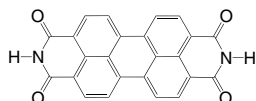
CAS No.	: 128-69-8
Grade	: Sublimed >99%
Formula	: C ₂₄ H ₆ O ₆
M.W.	: 392.32 g/mole
PL	: 413 nm (in CH ₂ Cl ₂)
TGA	: >450 °C (0.5% weight loss)



LT-S921 | PTCDI

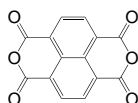
3,4,9,10-Perylenetetracarboxylic diimide

CAS No.	: 81-33-4
Grade	: Sublimed >99%
Formula	: C ₂₄ H ₁₀ N ₂ O ₄
M.W.	: 390.35 g/mole
PL	: 413 nm (in CH ₂ Cl ₂)
TGA	: >450 °C (0.5% weight loss)

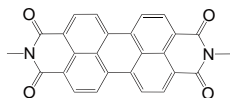
**LT-S924** | NTCDA

1,4,5,8-Naphthalenetetracarboxylic dianhydride

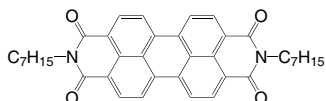
CAS No.	: 81-30-1
Grade	: Sublimed >99%
Formula	: C ₁₄ H ₄ O ₆
M.W.	: 268.18 g/mole
UV	: 366 nm (in CH ₂ Cl ₂)
PL	: 394 nm (in CH ₂ Cl ₂)
TGA	: >270 °C (0.5% weight loss)

**LT-S925** | MePTC*N,N'*-Dimethyl-3,4,9,10-perylene dicarboximide

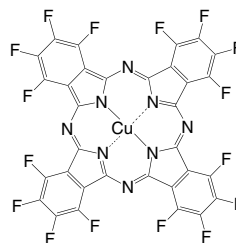
CAS No.	: 5521-31-3
Grade	: Sublimed product
Formula	: C ₂₆ H ₁₄ N ₂ O ₄
M.W.	: 418.4 g/mole
UV	: 522 nm (in CH ₂ Cl ₂)
PL	: 571 nm (in CH ₂ Cl ₂)
TGA	: >440 °C (0.5% weight loss)

**LT-S926** | HepPTC*N,N'*-Diheptyl-3,4,9,10-perylene dicarboximide

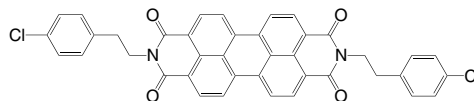
CAS No.	: 95689-91-1
Grade	: Sublimed >99%
Formula	: C ₃₈ H ₃₈ N ₂ O ₄
M.W.	: 586.72 g/mole
UV	: 524 nm (in CH ₂ Cl ₂)
PL	: 537, 571 nm (in CH ₂ Cl ₂)
TGA	: >390 °C (0.5% weight loss)

**LT-S928** | F₁₆CuPCCopper(II) 1,2,3,4,8,9,10,11,15,16,17,18,22,23,24,25-hexadecafluoro-29*H*,31*H*-phthalocyanine

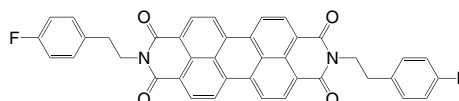
CAS No.	: 14916-87-1
Grade	: Sublimed product
Formula	: C ₃₂ F ₁₆ CuN ₈
M.W.	: 863.92 g/mole
UV	: 690 nm (in CH ₂ Cl ₂)

**LT-S935** | 4CIPEPTC*N,N'*-Bis[2-(4-chloro-phenyl)-ethyl]-3,4,9,10-perylene dicarboximide

CAS No.	: 215726-51-5
Grade	: Sublimed >99%
Formula	: C ₄₀ H ₂₄ Cl ₂ N ₂ O ₄
M.W.	: 667.53 g/mole
UV	: 524 nm (in CH ₂ Cl ₂)
PL	: 544 nm (in CH ₂ Cl ₂)
TGA	: >370 °C (0.5% weight loss)

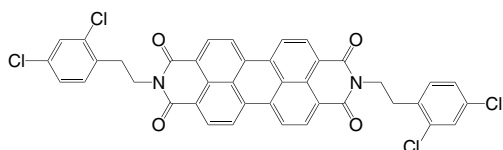
**LT-S936** | 4FPEPTC*N,N'*-Bis[2-(4-fluoro-phenyl)-ethyl]-3,4,9,10-perylene dicarboximide

CAS No.	: 215726-57-1
Grade	: Sublimed >99%
Formula	: C ₄₀ H ₂₄ F ₂ N ₂ O ₄
M.W.	: 634.63 g/mole
UV	: 524 nm (in CH ₂ Cl ₂)
PL	: 538 nm (in CH ₂ Cl ₂)
TGA	: >370 °C (0.5% weight loss)

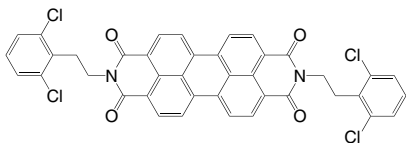


LT-S937 | 2,4CIPEPTC*N,N'*-Bis[2-(2,4-dichloro-phenyl)-ethyl]-3,4,9,10-perylene dicarboximide

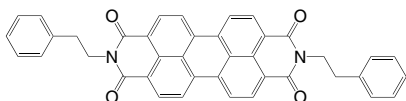
Grade : Sublimed >99%
 Formula : $C_{40}H_{22}Cl_4N_2O_4$
 M.W. : 736.42 g/mole
 UV : 524 nm (in CH_2Cl_2)
 PL : 536 nm (in CH_2Cl_2)
 TGA : >390 °C (0.5% weight loss)

**LT-S938** | 2,6CIPEPTC*N,N'*-Bis[2-(2,6-dichloro-phenyl)-ethyl]-3,4,9,10-perylene dicarboximide

Grade : Sublimed >99%
 Formula : $C_{40}H_{22}Cl_4N_2O_4$
 M.W. : 736.42 g/mole
 UV : 524 nm (in CH_2Cl_2)
 PL : 536 nm (in CH_2Cl_2)
 TGA : >440 °C (0.5% weight loss)

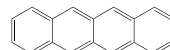
**LT-S939** | PEPTC*N,N'*-Bis(2-phenyl-ethyl)-3,4,9,10-perylene dicarboximide

CAS No. : 67075-37-0
 Grade : Sublimed >99%
 Formula : $C_{40}H_{26}N_2O_4$
 M.W. : 598.64 g/mole
 UV : 524 nm (in CH_2Cl_2)
 PL : 537 nm (in CH_2Cl_2)
 TGA : >390 °C (0.5% weight loss)

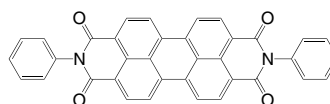
**LT-S940** | Tetracene

2,3-Benzanthracene

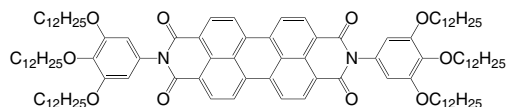
CAS No. : 92-24-0
 Grade : Sublimed >99% (HPLC)
 Formula : $C_{18}H_{12}$
 M.W. : 228.29 g/mole
 UV : 277 nm (in CH_2Cl_2)
 PL : 514 nm (in CH_2Cl_2)
 TGA : >180 °C (0.5% weight loss)

**LT-S941** | DP-PTCDI*N,N'*-Diphenyl-3,4,9,10-perylene dicarboximide

CAS No. : 128-65-4
 Grade : Sublimed >99%
 Formula : $C_{36}H_{18}N_2O_4$
 M.W. : 542.54 g/mole
 UV : 481, 515 nm (in THF)
 PL : 531 nm (in THF)
 TGA : >380 °C (0.5% weight loss)

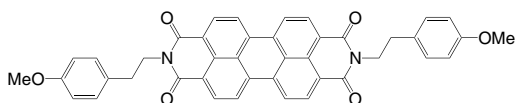
**LT-S956** | PDI1*N,N'*-Bis(3,4,5-tridodecyloxyphenyl)-3,4,9,10-perylene dicarboximide

CAS No. : 351377-40-7
 Grade : >99% (NMR)
 Formula : $C_{108}H_{162}N_2O_{10}$
 M.W. : 1648.45 g/mole
 UV : 489, 526 nm (in CH_2Cl_2)
 TGA : >290 °C (0.5% weight loss)



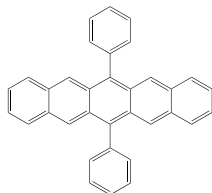
LT-S960 | 4MeOPEPTC*N,N'*-Bis[2-(4-methoxyphenyl)-ethyl]-3,4,9,10-perylene dicarboximide

CAS No.	: 119215-14-4
Grade	: Sublimed >99%
Formula	: C ₄₂ H ₃₀ N ₂ O ₆
M.W.	: 658.70 g/mole
UV	: 458, 524 nm (in CH ₂ Cl ₂)
PL	: 534 nm (in CH ₂ Cl ₂)
TGA	: >370 °C (0.5% weight loss)

**LT-S968** | 6,13-DP-Penta

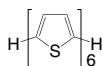
6,13-Diphenylpentacene

CAS No.	: 76727-11-2
Grade	: Sublimed >99% (HPLC)
Formula	: C ₃₄ H ₂₂
M.W.	: 430.54 g/mole
UV	: 307 nm (in CH ₂ Cl ₂)
PL	: 447 nm (in CH ₂ Cl ₂)
TGA	: >250 °C (0.5% weight loss)

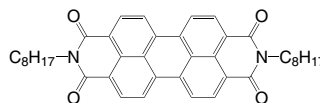
**LT-S969** | α-6T

α-Sexithiophene

CAS No.	: 88493-55-4
Grade	: Sublimed >99%
Formula	: C ₂₄ H ₁₄ S ₆
M.W.	: 494.76 g/mole
UV	: 437 nm (in CH ₂ Cl ₂)
PL	: 511 nm (in CH ₂ Cl ₂)
TGA	: >330 °C (0.5% weight loss)

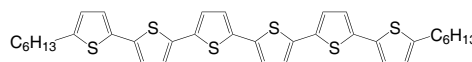
**LT-S970** | PTCDI-C₈*N,N'*-Diocetyl-3,4,9,10-perylene dicarboximide

CAS No.	: 78151-58-3
Grade	: Sublimed >99%
Formula	: C ₄₀ H ₄₂ N ₂ O ₄
M.W.	: 614.77 g/mole
UV	: 456, 524 nm (in CH ₂ Cl ₂)
PL	: 573 nm (in CH ₂ Cl ₂)
TGA	: >390 °C (0.5% weight loss)

**LT-S972** | α,ω-DH6T

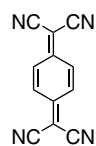
5,5''''-Dihexyl-2,2':5',2''':5'',2''':5''',2''''-sexithiophene

CAS No.	: 151271-43-1
Grade	: Sublimed >99%
Formula	: C ₃₆ H ₃₈ S ₆
M.W.	: 663.08 g/mole
PL	: 439 nm (in Toluene)
TGA	: >230 °C (0.5% weight loss)

**LT-S973** | TCNQ

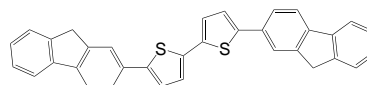
7,7,8,8-Tetracyanoquinodimethane

CAS No.	: 1518-16-7
Grade	: Sublimed >99% (HPLC)
Formula	: C ₁₂ H ₄ N ₄
M.W.	: 204.19 g/mole
UV	: 259, 404 nm (in CH ₂ Cl ₂)
TGA	: >210 °C (0.5% weight loss)

**LT-S975** | FTTF

5,5'-Di(9H-fluoren-2-yl)-2,2'-bithiophene

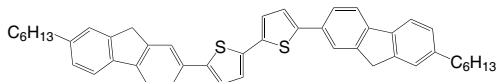
CAS No.	: 369599-41-7
Grade	: Sublimed >99%
Formula	: C ₃₄ H ₂₂ S ₂
M.W.	: 494.67 g/mole
PL	: 378 nm (in Toluene)
TGA	: >200 °C (0.5% weight loss)



LT-S976 | DH-FTTF

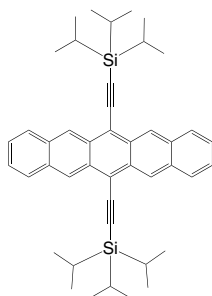
5,5'-Bis(7-hexyl-9H-fluoren-2-yl)-2,2'-bithiophene

CAS No. : 369599-42-8
 Grade : Sublimed >99%
 Formula : $C_{46}H_{46}S_2$
 M.W. : 662.99 g/mole
 UV : 378 nm (in Toluene)
 TGA : >200 °C (0.5% weight loss)

**LT-S977** | TIPS

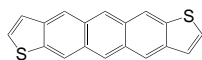
6,13-Bis(triisopropylsilylethynyl)pentacene

CAS No. : 373596-08-8
 Grade : >99% (HPLC)
 Formula : $C_{44}H_{54}Si_2$
 M.W. : 639.07 g/mole
 UV : 307 nm (in CH_2Cl_2)
 TGA : >230 °C (0.5% weight loss)

**LT-S9026** | ADT

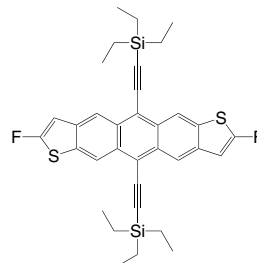
Anthra[2,3-b:6,7-b']dithiophene

CAS No. : 144413-58-1
 Grade : Sublimed >99%
 Formula : $C_{18}H_{10}S_2$
 M.W. : 290.40 g/mole
 UV : 320 nm (in CH_2Cl_2)
 TGA : >250 °C (0.5% weight loss)

**LT-S9027** | diF-TES-ADT

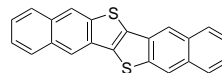
2,8-Difluoro-5,11-bis(triethylsilylethynyl)anthradithiophene, mixture of syn & anti isomers

CAS No. : 1015071-21-2
 Grade : >99% (NMR)
 Formula : $C_{34}H_{36}F_2S_2Si_2$
 M.W. : 602.95 g/mole
 TGA : >230 °C (0.5% weight loss)

**LT-S9031** | DNTT

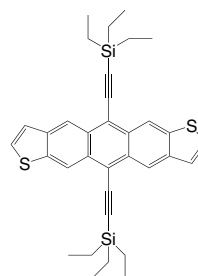
Dinaphtho[2,3-b:2,3'-f]thieno[3,2-b]thiophene

CAS No. : 935280-42-5
 Grade : Sublimed >99%
 Formula : $C_{22}H_{12}S_2$
 M.W. : 340.46 g/mole
 TGA : >310 °C (0.5% weight loss)

**LT-S9034** | TES-ADT

5,11-Bis(triethylsilylethynyl)anthradithiophene, mixture of syn & anti isomers

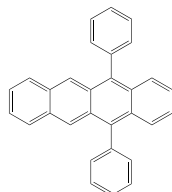
CAS No. : 851817-11-3
 Grade : >99% (NMR)
 Formula : $C_{34}H_{38}S_2Si_2$
 M.W. : 566.97 g/mole
 UV : 306 nm (in CH_2Cl_2)
 TGA : >230 °C (0.5% weight loss)



LT-S9035 | DPT

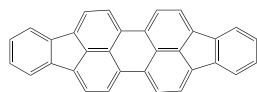
5,12-Diphenyltetracene

CAS No. : 27130-32-1
 Grade : Sublimed >99% (HPLC)
 Formula : C₃₀H₂₀
 M.W. : 380.48 g/mole
 UV : 262, 492 nm (in CH₂Cl₂)
 TGA : >230 °C (0.5% weight loss)

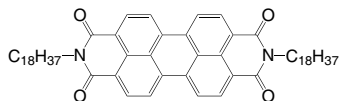
**LT-S9036** | DIP

Diindeno[1,2,3-cd:1',2',3'-lm]perylene

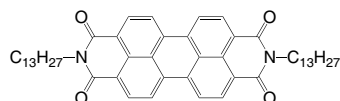
CAS No. : 188-94-3
 Grade : Sublimed product
 Formula : C₃₂H₁₆
 M.W. : 400.47 g/mole
 UV : 494, 532 nm (in CH₂Cl₂)
 TGA : >230 °C (0.5% weight loss)

**LT-S9041** | PTCDI-C₁₈H₃₇*N,N'*-Dioctadecyl-3,4,9,10-perylenedicarboximide

CAS No. : 25834-02-0
 Grade : Sublimed >99%
 Formula : C₆₀H₈₂N₂O₄
 M.W. : 895.30 g/mole
 UV : 485, 520 nm (in Toluene)
 TGA : >340 °C (0.5% weight loss)

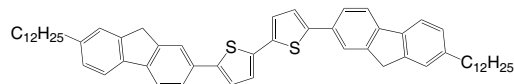
**LT-S9042** | PTCDI-C₁₃H₂₇*N,N'*-Ditridecyl-3,4,9,10-perylenedicarboximide

CAS No. : 95689-92-2
 Grade : Sublimed >99%
 Formula : C₅₀H₆₂N₂O₄
 M.W. : 755.04 g/mole
 UV : 484, 520 nm (in Toluene)
 TGA : >390 °C (0.5% weight loss)

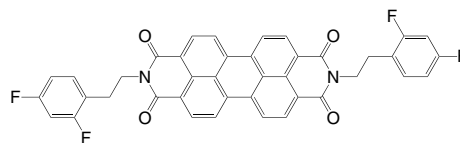
**LT-S9043** | Ddodec-FTTF

5,5'-Bis(7-dodecyl-9H-fluorene-2-yl)-2,2'-bithiophene

CAS No. : 846542-27-6
 Grade : Sublimed >99%
 Formula : C₅₈H₇₀S₂
 M.W. : 831.31 g/mole
 UV : 254, 409 nm (in CH₂Cl₂)
 TGA : >350 °C (0.5% weight loss)

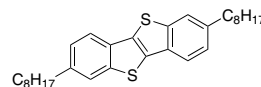
**LT-S9049** | 2,4-FPEPTC*N,N'*-Bis[2-(2,4-difluoro-phenyl)-ethyl]-3,4,9,10-perylene dicarboximide

CAS No. : 1644439-37-1
 Grade : Sublimed >99%
 Formula : C₄₀H₂₂F₄N₂O₄
 M.W. : 670.61 g/mole
 UV : 245 nm (in CH₂Cl₂)
 TGA : >340 °C (0.5% weight loss)

**LT-S9054** | C8-BTBT

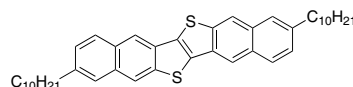
2,7-Dioctyl[1]benzothieno[3,2-b][1]benzothiophene

CAS No. : 583050-70-8
 Grade : Sublimed >99%
 Formula : C₃₀H₄₀S₂
 M.W. : 464.77 g/mole

**LT-S9055** | C10-DNTT

2,9-Didecylindaphtho[2,3-b:2',3'-f]thieno[3,2-b]thiophene

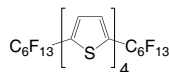
CAS No. : 1169932-40-4
 Grade : Sublimed >99%
 Formula : C₄₂H₅₂S₂
 M.W. : 620.99 g/mole



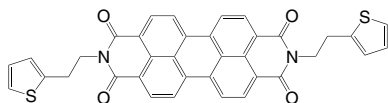
LT-S9057 | DFH-4T

5,5'-Bis((5-perfluorohexyl)thiophen-2-yl)-2,2'-bithiophene

CAS No. : 446043-85-2
 Grade : Sublimed >99%
 Formula : $C_{28}H_8F_{26}S_4$
 M.W. : 966.58 g/mole
 UV : 259, 404 nm (in CH_2Cl_2)
 TGA : >220 °C (0.5% weight loss)

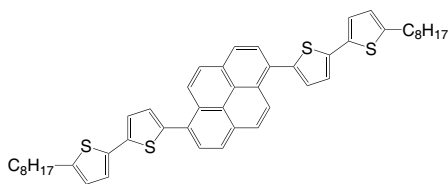
**LT-S9059** | TEPTC*N,N'*-Di(thiophen-2-yl)ethyl-3,4,9,10-perylene dicarboximide

CAS No. : 1559069-50-9
 Grade : Sublimed >99%
 Formula : $C_{36}H_{22}N_2O_4S_2$
 M.W. : 610.70 g/mole
 UV : 260 nm (in CH_2Cl_2)
 TGA : >400 °C (0.5% weight loss)

**LT-S9077** | BOBTP

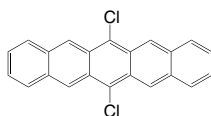
1,6-Bis(5'-octyl-2,2'-bithiophen-5-yl)pyrene

CAS No. : 1430207-54-7
 Grade : Sublimed >99% (NMR)
 Formula : $C_{48}H_{50}S_4$
 M.W. : 755.17 g/mole
 UV : 322, 410 nm (in $CHCl_3$)

**LT-S9080** | DCP

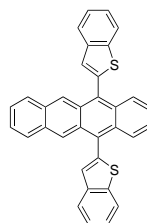
6,13-Dichloropentacene

CAS No. : 59156-92-2
 Grade : Sublimed >99%
 Formula : $C_{22}H_{12}Cl_2$
 M.W. : 347.24 g/mole
 TGA : >350 °C (0.5% weight loss)

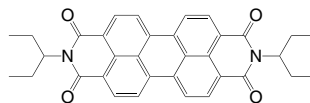
**LT-S9088** | 5,12-DBTT**NEW**

5,12-Bis(benzo[b]thiophen-2-yl)tetracene

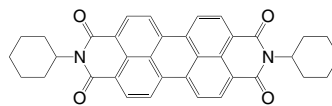
CAS No. : 1225220-87-0
 Grade : Sublimed >98%
 Formula : $C_{34}H_{20}S_2$
 M.W. : 492.65 g/mole

**LT-S9092** | 3PenPTC*N,N'*-Bis(ethylpropyl)perylene-3,4,9,10-tetracarboxylicdiimide

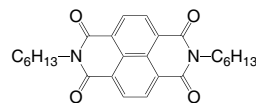
CAS No. : 110590-81-3
 Grade : Sublimed >99%
 Formula : $C_{34}H_{30}N_2O_4$
 M.W. : 530.61 g/mole
 TGA : >270 °C (0.5% weight loss)

**LT-S9093** | DCyPTC*N,N'*-Dicyclohexylperylene-3,4,9,10-tetracarboxylicdiimide

CAS No. : 41572-86-5
 Grade : Sublimed >99%
 Formula : $C_{36}H_{30}N_2O_4$
 M.W. : 554.63 g/mole
 TGA : >350 °C (0.5% weight loss)

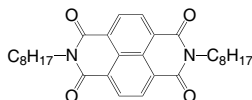
**LT-S9094** | NTDA-C₆H₁₃2,7-Dihexylbenzo[*lmn*][3,8]phenanthroline-1,3,6,8(2*H*,7*H*)-tetraone

CAS No. : 23536-15-4
 Grade : Sublimed >99% (HPLC)
 Formula : $C_{26}H_{30}N_2O_4$
 M.W. : 434.53 g/mole
 TGA : >250 °C (0.5% weight loss)

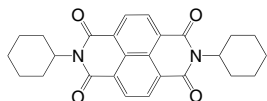


LT-S9095 | NTDA-C₈H₁₇2,7-Dioctylbenzo[*lmn*][3,8]phenanthroline-1,3,6,8(2*H*,7*H*)-tetraone

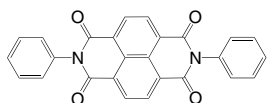
CAS No. : 34155-21-0
 Grade : Sublimed >99% (HPLC)
 Formula : C₃₀H₃₈N₂O₄
 M.W. : 490.63 g/mole
 TGA : >280 °C (0.5% weight loss)

**LT-S9096** | DCyNTDA2,7-Dicyclohexylbenzo[*lmn*][3,8]phenanthroline-1,3,6,8(2*H*,7*H*)-tetraone

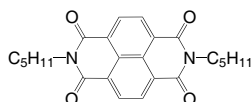
CAS No. : 173409-43-3
 Grade : Sublimed >99% (HPLC)
 Formula : C₂₆H₂₆N₂O₄
 M.W. : 430.50 g/mole
 TGA : >280 °C (0.5% weight loss)

**LT-S9097** | DPNTDA2,7-Diphenylbenzo[*lmn*][3,8]phenanthroline-1,3,6,8(2*H*,7*H*)-tetraone

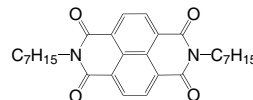
CAS No. : 24259-89-0
 Grade : Sublimed >99%
 Formula : C₂₆H₁₄N₂O₄
 M.W. : 418.40 g/mole
 TGA : >280 °C (0.5% weight loss)

**LT-S9098** | NTDA-C₅H₁₁2,7-Dipentylbenzo[*lmn*][3,8]phenanthroline-1,3,6,8(2*H*,7*H*)-tetraone

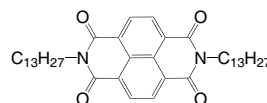
CAS No. : 173409-41-1
 Grade : Sublimed >99% (HPLC)
 Formula : C₂₄H₂₆N₂O₄
 M.W. : 406.47 g/mole
 TGA : >240 °C (0.5% weight loss)

**LT-S9099** | NTDA-C₇H₁₅2,7-Diheptylbenzo[*lmn*][3,8]phenanthroline-1,3,6,8(2*H*,7*H*)-tetraone

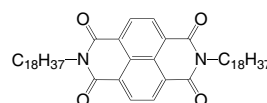
CAS No. : 698370-78-4
 Grade : Sublimed >99%
 Formula : C₂₈H₃₄N₂O₄
 M.W. : 462.58 g/mole
 TGA : >280 °C (0.5% weight loss)

**LT-S9100** | NTDA-C₁₃H₂₇2,7-Ditridecylbenzo[*lmn*][3,8]phenanthroline-1,3,6,8(2*H*,7*H*)-tetraone

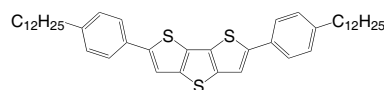
CAS No. : 1373274-00-0
 Grade : Sublimed >99%
 Formula : C₄₀H₅₈N₂O₄
 M.W. : 630.90 g/mole
 TGA : >280 °C (0.5% weight loss)

**LT-S9101** | NTDA-C₁₈H₃₇2,7-Dioctadecylbenzo[*lmn*][3,8]phenanthroline-1,3,6,8(2*H*,7*H*)-tetraone

CAS No. : 144742-50-7
 Grade : Sublimed >99% (HPLC)
 Formula : C₅₀H₇₈N₂O₄
 M.W. : 771.17 g/mole
 TGA : >280 °C (0.5% weight loss)

**LT-S9102** | DTT-122,6-Bis(4-dodecylphenyl)-dithieno[3,2-*b*:2',3'-*d'*]thiophene

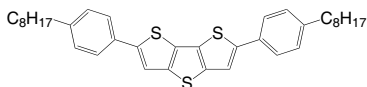
CAS No. : 1446140-70-0
 Grade : Sublimed >99% (NMR)
 Formula : C₄₄H₆₀S₃
 M.W. : 685.14 g/mole
 TGA : >280 °C (0.5% weight loss)



LT-S9103 | DTT-8

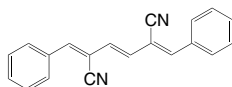
2,6-Bis(4-octylphenyl)-dithieno[3,2-b:2',3'-d]thiophene

CAS No. : 1429377-95-6
 Grade : Sublimed >99% (NMR)
 Formula : $C_{36}H_{44}S_3$
 M.W. : 572.93 g/mole
 TGA : >270 °C (0.5% weight loss)

**LT-S9128** | Dp-triene-2,5-CN

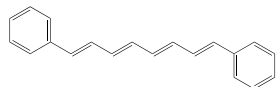
(2Z,3E,5Z)-2,5-Dibenzylidenehex-3-enedinitrile

CAS No. : 1376166-32-3
 Grade : >99%
 Formula : $C_{20}H_{14}N_2$
 M.W. : 282.34 g/mole

**LT-S9129** | Dp-tetraene

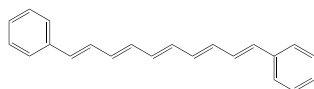
(1E,3E,5E,7E)-1,8-Diphenylocta-1,3,5,7-tetraene

CAS No. : 3029-40-1
 Grade : >99%
 Formula : $C_{20}H_{18}$
 M.W. : 258.36 g/mole

**LT-S9130** | Dp-pentaene

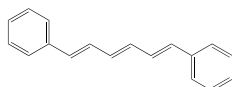
(1E,3E,5E,7E,9E)-1,10-Diphenyldeca-1,3,5,7,9-pentaene

CAS No. : 3029-41-2
 Grade : >99%
 Formula : $C_{22}H_{20}$
 M.W. : 284.39 g/mole

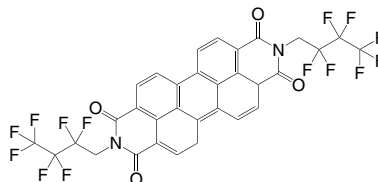
**LT-S9131** | Dp-triene

(1E,3E,5E)-1,6-Diphenylhexa-1,3,5-triene

CAS No. : 1720-32-7
 Grade : >99%
 Formula : $C_{18}H_{16}$
 M.W. : 232.32 g/mole

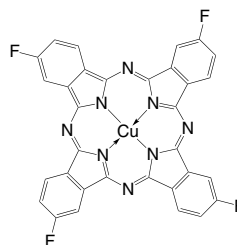
**LT-S9132** | PTCPI-CH₂C₃F₇*N,N'*-Bis(2,2,3,3,4,4,4-heptafluorobutyl)-3,4,9,10-perylene dicarboximide

CAS No. : 1150578-28-1
 Grade : Sublimed >99%
 Formula : $C_{32}H_{12}F_{14}N_2O_4$
 M.W. : 756.44 g/mole
 TGA : >300 °C (0.5% weight loss)

**LT-S9134** | F₄CuPC

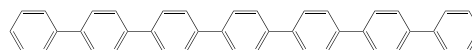
Copper(II)-2,9,16,23-tetrafluoro-29H,31H-phthalocyanine

CAS No. : 65602-84-8
 Grade : Sublimed >99%
 Formula : $C_{32}H_{12}CuF_4N_8$
 M.W. : 648.03 g/mole
 TGA : >350 °C (0.5% weight loss)

**LT-S9159** | p-Septiphenyl

p-Septiphenyl

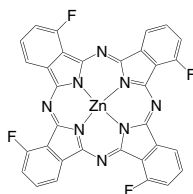
CAS No. : 70352-20-4
 Grade : >99%
 Formula : $C_{42}H_{30}$
 M.W. : 534.69 g/mole
 TGA : >280 °C (0.5% weight loss)



LT-S9171 | F₄ZnPC

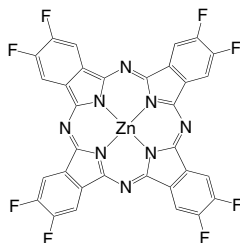
Zinc(II)-1,8,15,22-tetrafluoro-29H,31H-phthalocyanine, mixture of isomers

CAS No. : 1120355-28-3
 Grade : Sublimed >99%
 Formula : C₃₂H₁₂F₄N₈Zn
 M.W. : 649.89 g/mole
 UV : 681 nm (in CHCl₃)
 TGA : >300 °C (0.5% weight loss)

**LT-S9172** | F₈ZnPC

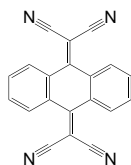
Zinc(II)-2,3,9,10,16,17,23,24-octafluoro-29H,31H-phthalocyanine

CAS No. : 676519-80-5
 Grade : Sublimed >99%
 Formula : C₃₂H₈F₈N₈Zn
 M.W. : 721.86 g/mole
 UV : 338, 656 nm (in DMF)
 TGA : >300 °C (0.5% weight loss)

**LT-S9173** | An-PDN

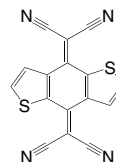
2,2'-(9,10-Anthracenediylidene)-bis-propanedinitrile

CAS No. : 70359-39-6
 Grade : Sublimed >99% (HPLC)
 Formula : C₂₀H₈N₄
 M.W. : 304.3 g/mole
 UV : 283, 348 nm (in CHCl₃)
 TGA : >250 °C (0.5% weight loss)

**LT-S9174** | DTTCNQ

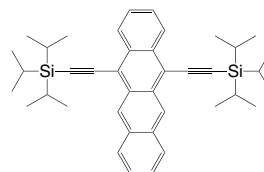
2,2'-Benzo[1,2-b:4,5-b']dithiophene-4,8-diylidene-bis-propanedinitrile

CAS No. : 109573-90-2
 Grade : Sublimed >99% (HPLC)
 Formula : C₁₆H₄N₄S₂
 M.W. : 316.36 g/mole
 UV : 231, 438 nm (in CHCl₃)
 TGA : >250 °C (0.5% weight loss)

**LT-S9175** | 5,12-TIPS-Tetracene

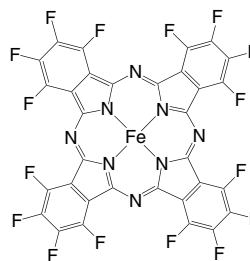
5,12-Bis((triisopropylsilyl)ethynyl)tetracene

CAS No. : 628316-50-7
 Grade : >99% (NMR)
 Formula : C₄₀H₅₂Si₂
 M.W. : 589.01 g/mole
 UV : 389 nm (in CH₂Cl₂)
 TGA : >250 °C (0.5% weight loss)

**LT-S9177** | F₁₆FePC

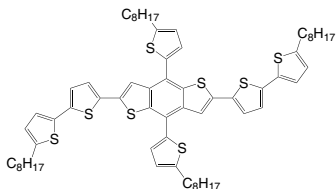
Iron(II) 1,2,3,4,8,9,10,11,15,16,17,18,22,23,24,25-hexadecafluoro-29H,31H-phthalocyanine

CAS No. : 23844-93-1
 Grade : Sublimed >99%
 Formula : C₃₂F₁₆FeN₈
 M.W. : 856.22 g/mole
 UV : 333, 627 nm (in Acetone)
 TGA : >300 °C (0.5% weight loss)

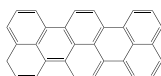


LT-S9179 | BDT2TH2,6-Bis[(5'-octyl)[2,2'-bithiophene]][4,8-bis(5-octyl-2-thienyl)benzo[1,2-*b*:4,5-*b'*]dithiophene]

Grade : >99% (NMR)
 Formula : C₆₆H₈₂S₈
 M.W. : 1131.88 g/mole
 UV : 249, 359, 442 nm (in CHCl₃)

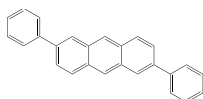
**LT-S9211** | DTT-8Tribenzo[*de,kl,rst*]pentaphene

CAS No. : 188-72-7
 Grade : >98% (NMR)
 Formula : C₃₀H₁₆
 M.W. : 376.45 g/mole

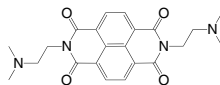
**LT-S9213** | DPA

2,6-Diphenylanthracene

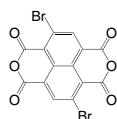
CAS No. : 95950-70-2
 Grade : Sublimed >99% (HPLC)
 Formula : C₂₆H₁₈
 M.W. : 330.42 g/mole
 TGA : >200 °C (0.5% weight loss)

**LT-S9259**2,7-Bis(2-(dimethylamino)ethyl)benzo[*mn*][3,8]phenanthroline-1,3,6,8(2*H*,7*H*)-tetraone

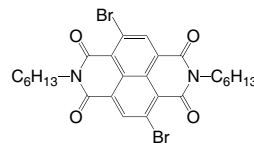
CAS No. : 22291-04-9
 Grade : Sublimed >99% (HPLC)
 Formula : C₂₂H₂₄N₄O₄
 M.W. : 408.45 g/mole

**LT-S9260**4,9-Dibromo-isochromeno[6,5,4-*def*]isochromene-1,3,6,8-tetraone

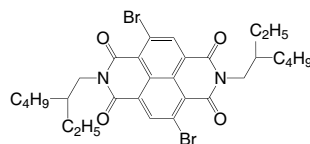
CAS No. : 83204-68-6
 Grade : >80%
 Formula : C₁₄H₂Br₂O₆
 M.W. : 425.97 g/mole

**LT-S9261**4,9-Dibromo-2,7-dihexylbenzo[*mn*][3,8]phenanthroline-1,3,6,8-tetraone

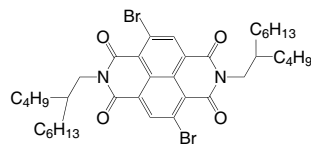
CAS No. : 1239327-73-1
 Formula : C₂₆H₂₈Br₂N₂O₄
 M.W. : 592.32 g/mole

**LT-S9262**4,9-Dibromo-2,7-bis(2-ethylhexyl)benzo[*mn*][3,8]phenanthroline-1,3,6,8(2*H*,7*H*)-tetraone

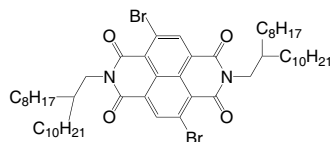
CAS No. : 1088205-02-0
 Formula : C₃₀H₃₆Br₂N₂O₄
 M.W. : 648.43 g/mole

**LT-S9263**4,9-Dibromo-2,7-bis(2-butylloctyl)benzo[*mn*][3,8]phenanthroline-1,3,6,8(2*H*,7*H*)-tetraone

CAS No. : 1614253-96-1
 Formula : C₃₈H₅₂Br₂N₂O₄
 M.W. : 760.64 g/mole

**LT-S9264**4,9-Dibromo-2,7-bis(2-octyldodecyl)benzo[*mn*][3,8]phenanthroline-1,3,6,8(2*H*,7*H*)-tetraone

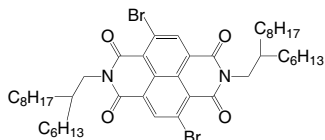
CAS No. : 1100243-35-3
 Formula : C₅₄H₈₄Br₂N₂O₄
 M.W. : 985.06 g/mole



LT-S9265

4,9-Dibromo-2,7-bis(2-hexyldecyl)benzo[*lmn*][3,8]phenanthroline-1,3,6,8(2*H*,7*H*)-tetraone

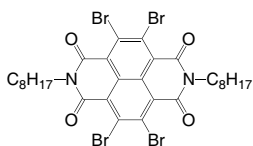
CAS No. : 1459168-68-3
 Grade : >98% (HPLC)
 Formula : C₄₆H₆₈Br₂N₂O₄
 M.W. : 872.85 g/mole



LT-S9267

4,5,9,10-Tetrabromo-2,7-dioctylbenzo[*lmn*][3,8]phenanthroline-1,3,6,8-tetraone

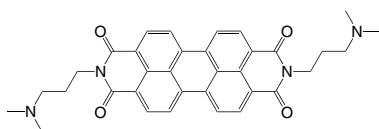
CAS No. : 954374-43-7
 Formula : C₃₀H₃₄Br₄N₂O₄
 M.W. : 806.22 g/mole



LT-S9268 PDIN

2,9-Bis(3-(dimethylamino)propyl)anthra[2,1,9-*def*:6,5,10-*d'e'f'*]diisoquinoline-1,3,8,10(2*H*,9*H*)-tetraone

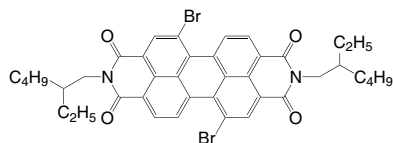
CAS No. : 117901-97-0
 Formula : C₃₄H₃₂N₄O₄
 M.W. : 560.64 g/mole
 HOMO : -6.05 eV
 LUMO : -3.72 eV



LT-S9269

5,12-Dibromo-2,9-bis(2-ethylhexyl)anthra[2,1,9-*def*:6,5,10-*d'e'f'*]diisoquinoline-1,3,8,10(2*H*,9*H*)-tetraone

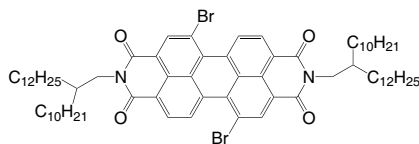
CAS No. : 851786-15-7
 Formula : C₄₀H₄₀Br₂N₂O₄
 M.W. : 772.56 g/mole



LT-S9270

5,12-Dibromo-2,9-bis(2-decyltetradecyl)anthra[2,1,9-*def*:6,5,10-*d'e'f'*]diisoquinoline-1,3,8,10(2*H*,9*H*)-tetraone

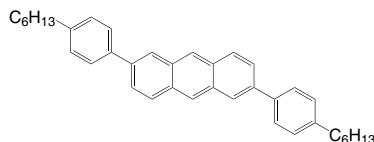
CAS No. : 909019-78-9
 Formula : C₇₂H₁₀₄Br₂N₂O₄
 M.W. : 1221.42 g/mole



LT-S9285 C6-DPA

2,6-Bis(4-hexylphenyl)anthracene

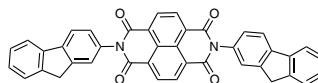
CAS No. : 1258209-99-2
 Grade : Sublimed >99%
 Formula : C₃₈H₄₂
 M.W. : 498.74 g/mole
 TGA : >260 °C (0.5% weight loss)



LT-S9500 Bis-HFI-NTCDI

2,7-Di(9*H*-fluoren-2-yl)benzo[*lmn*][3,8]-phenanthroline-1,3,6,8(2*H*,7*H*)-tetraone

CAS No. : 1397188-84-9
 Grade : Sublimed >99%
 Formula : C₄₀H₂₂N₂O₄
 M.W. : 594.61 g/mole
 TGA : >450 °C (0.5% weight loss)
 EA : 3.5 eV
 Conductivity : 1.3 x 10⁻⁴ S/cm



NEW

LT-S9538 | cis-cis TFT-CN and cis-trans TFT-CN

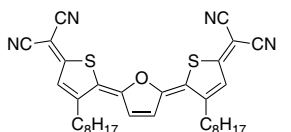
2,2'-(5Z,5'Z)-5,5'-(furan-2,5-diylidene)bis(4-octylthiophene-5,2(5H)-diylidene)dimalononitrile, mixture of isomers

CAS No. : 1938123-97-7 and 1938123-98-8

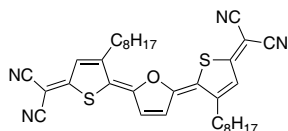
Grade : >98% (HPLC)

Formula : $C_{34}H_{38}N_4OS_2$

M.W. : 582.82 g/mole



+



LT-S9540 | TIPS anti DNI

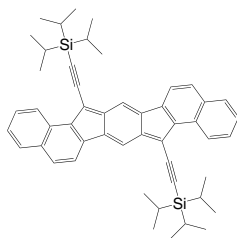
8,16-Bis((triisopropylsilyl)ethynyl)benzo[a]benzo[4,5]-indeno[2,1-h]fluorine

CAS No. : 2080320-19-8

Grade : >99% (HPLC)

Formula : $C_{50}H_{56}Si_2$

M.W. : 713.15 g/mole

Hole Mobility : $7.1 \text{ cm}^2 / \text{Vs}$ 

LT-S9541 | C13-BTBT

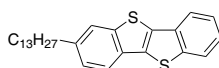
2-Tridecyl-[1]benzothieno[3,2-b][1]benzothiophene

CAS No. : 1198290-20-8

Grade : Sublimed >99% (HPLC)

Formula : $C_{27}H_{34}S_2$

M.W. : 422.69 g/mole



LT-S9548 | BPE-PMDI

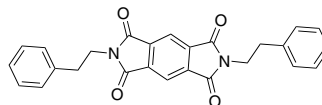
NEW

2,6-diphenethylpyrrolo[3,4-f]isoindole-1,3,5,7(2H,6H)-tetraone

Grade : Sublimed >99%

Formula : $C_{26}H_{20}N_2O_4$

M.W. : 424.45 g/mole



LT-S9549 | C8-PMDI

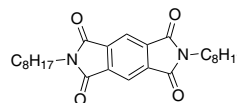
NEW

2,6-Dioctylpyrrolo[3,4-f]isoindole-1,3,5,7(2H,6H)-tetraone

Grade : Sublimed >99% (HPLC)

Formula : $C_{26}H_{36}N_2O_4$

M.W. : 440.58 g/mole



LT-S9551 | NTDA-C16H33

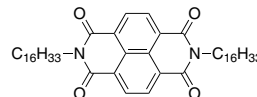
NEW

2,7-Dihexadecylbenzo[Imn][3,8]phenanthroline-1,3,6,8(2H,7H)-tetraone

Grade : Sublimed >99% (HPLC)

Formula : $C_{46}H_{70}N_2O_4$

M.W. : 715.06 g/mole



LT-S9552 | TIPS-anthracene

NEW

9,10-Bis((triisopropylsilyl)ethynyl)anthracene

CAS No. : 862667-06-9

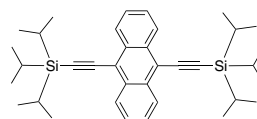
Grade : >99% (HPLC)

Formula : $C_{36}H_{50}Si_2$

M.W. : 538.95 g/mole

HOMO : -5.6 eV

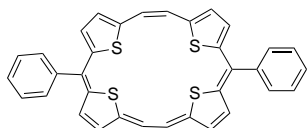
LUMO : -2.9 eV



LT-S9553 | DPTTA

2,13-Diphenyl-23,24,25,26-tetrahiapentacyclo-[1,8,2,1,13,6,19,12,14,17]hexacosia-1,3,5,7,9,11,13,15,17,19,21-undecaene

CAS No. : 1265748-61-5
 Grade : >99%
 Formula : $C_{34}H_{22}S_4$
 M.W. : 558.80 g/mole
 UV : 319, 401 nm (Toluene)
 HOMO : -4.42 eV
 LUMO : -2.51 eV

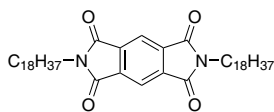


LT-S9554 | C18-PMDI

NEW

2,6-Dioctadecylpyrrolo[3,4-f]isoindole-1,3,5,7(2H,6H)-tetraone

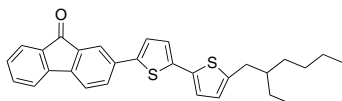
Grade : Sublimed >99%
 Formula : $C_{46}H_{76}N_2O_4$
 M.W. : 721.11 g/mole



LT-S9561

2-(5'-(2-Ethylhexyl)-[2,2'-bithiophen]-5-yl)-9H-fluoren-9-one

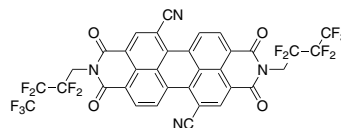
CAS No. : 2499491-20-0
 Grade : >99%
 Formula : $C_{29}H_{28}OS_2$
 M.W. : 456.66 g/mole
 UV : 252, 302 nm ($CHCl_3$)
 HOMO : -5.17 eV
 LUMO : -2.89 eV



LT-S9579 | PDIF-CN2

2,9-Bis(2,2,3,3,4,4,4-heptafluorobutyl)-1,3,8,10-tetraoxo-1,2,3,8,9,10-hexahydroanthra[2,1,9-def:6,5,10-d'e'f']diisoquinoline-5,12-Dicarbonitrile, mixture of isomers

CAS No. : 844868-47-9
 Grade : Sublimed >97%
 Formula : $C_{34}H_{10}F_{14}N_4O_4$
 M.W. : 804.45 g/mole
 HOMO : -6.8 eV
 LUMO : -4.50 eV

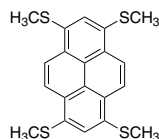


LT-S9580 | MT-pyrene

NEW

1,3,6,8-Tetrakis(methylthio)pyrene

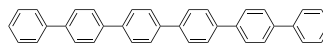
Grade : Sublimed >99%
 Formula : $C_{20}H_{18}S_4$
 M.W. : 386.62 g/mole



LT-S9586 | p-6P

p-Sexiphenyl

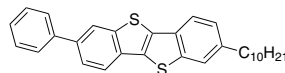
CAS No. : 4499-83-6
 Grade : Sublimed >99%
 Formula : $C_{36}H_{26}$
 M.W. : 458.59 g/mole
 HOMO : -5.6 eV
 LUMO : -1.8 eV



LT-S9587 | Ph-BTBT-10

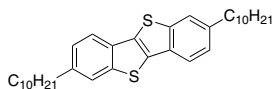
2-Decyl-7-phenyl[1]benzothieno[3,2-b][1]benzothiophene

CAS No. : 1398395-83-9
 Grade : Sublimed >99% (HPLC)
 Formula : $C_{30}H_{32}S_2$
 M.W. : 456.71 g/mole

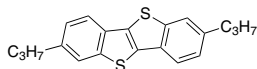


LT-S9592 | C10-BTBT2,7-Didecyl[1]benzothieno[3,2-*b*][1]benzothiophene

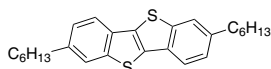
CAS No. : 583050-71-9
 Grade : Sublimed > 99% (HPLC)
 Formula : C₃₄H₄₈S₂
 M.W. : 520.87 g/mole

**LT-S9593** | C3-BTBT2,7-Dipropyl-4*b*,9*b*-dihydrobenzo[*b*]benzo[4,5]thieno[2,3-*d*]thiophene

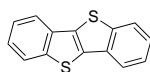
CAS No. : 1198290-38-8
 Grade : Sublimed > 99%
 Formula : C₂₀H₂₆S₂
 M.W. : 324.5 g/mole

**LT-S9594** | C6-BTBT2,7-Dihexyl-4*b*,9*b*-dihydrobenzo[*b*]benzo[4,5]thieno[2,3-*d*]thiophene

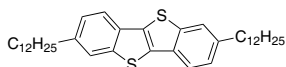
CAS No. : 583050-69-5
 Grade : Sublimed > 99% (HPLC)
 Formula : C₂₆H₃₂S₂
 M.W. : 408.66 g/mole

**LT-S9595** | BTBTBenzo[*b*]benzo[4,5]thieno[2,3-*d*]thiophene

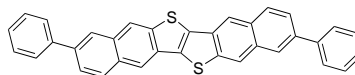
CAS No. : 248-70-4
 Grade : Sublimed > 99% (HPLC)
 Formula : C₁₄H₈S₂
 M.W. : 240.34 g/mole

**LT-S9596** | C12-BTBT2,7-Didodecylbenzo[*b*]benzo[4,5]thieno[2,3-*d*]thiophene

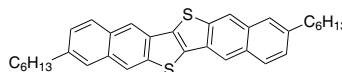
CAS No. : 473723-54-5
 Grade : Sublimed > 99%
 Formula : C₃₈H₅₆S₂
 M.W. : 576.98 g/mole

**LT-S9597** | DPh-DNTT2,9-Diphenyl-dinaphtho[2,3-*b*:2',3'-*f*]thieno[3,2-*b*]thiophene

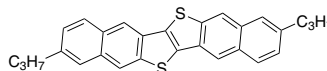
CAS No. : 1310198-13-0
 Grade : Sublimed > 99%
 Formula : C₃₄H₂₀S₂
 M.W. : 492.65 g/mole

**LT-S9598** | C6-DNTT2,9-Dihexylnaphtho[2,3-*b*]naphtho[2',3':4,5]thieno[2,3-*d*]thiophene

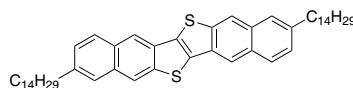
CAS No. : 1242239-89-9
 Grade : Sublimed > 99%
 Formula : C₃₄H₃₆S₂
 M.W. : 508.78 g/mole

**LT-S9599** | C3-DNTT2,9-Dipropyl-naphtho[2,3-*b*]naphtho[2',3':4,5]-thieno[2,3-*d*]thiophene

CAS No. : 1242239-91-3
 Grade : Sublimed > 99%
 Formula : C₂₈H₂₄S₂
 M.W. : 424.62 g/mole

**LT-S9600** | C14-DNTT2,9-Ditetradecylnaphtho[2,3-*b*]naphtho[2',3':4,5]thieno[2,3-*d*]thiophene

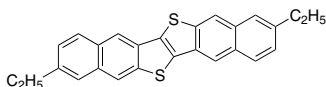
Grade : Sublimed > 99%
 Formula : C₅₀H₆₈S₂
 M.W. : 733.2 g/mole



LT-S9601 | C2-DNTT

2,9-Diethylnaphtho[2,3-*b*]naphtho[2',3':4,5]thieno[2,3-*d*]thiophene

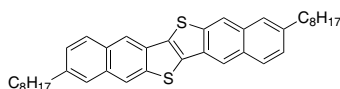
Grade : Sublimed > 99%
 Formula : C₂₆H₂₀S₂
 M.W. : 396.57 g/mole



LT-S9602 | C8-DNTT

2,9-Dioctylnaphtho[2,3-*b*]naphtho[2',3':4,5]thieno[2,3-*d*]thiophene

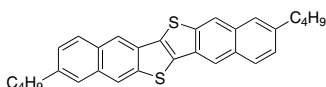
Grade : Sublimed > 99% (HPLC)
 Formula : C₃₈H₄₄S₂
 M.W. : 564.89 g/mole



LT-S9603 | C4-DNTT

2,9-Dibutyl-naphtho[2,3-*b*]naphtho[2',3':4,5]thieno[2,3-*d*]thiophene

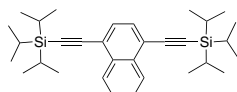
Grade : Sublimed > 99% (HPLC)
 Formula : C₃₀H₂₈S₂
 M.W. : 452.67 g/mole



LT-S9604 | TIPS-Nph

1,4-Bis((triisopropylsilyl)ethynyl)_naphthalene

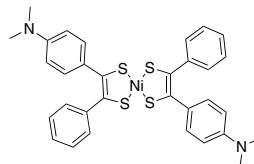
CAS No : 2499713-87-8
 Grade : > 99%
 Formula : C₃₂H₄₈Si₂
 M.W. : 488.89 g/mole
 UV : 333 nm (in Toluene)
 PL : 588 nm (in Toluene)



LT-S9605 | BDN

Bis[1-(4-dimethylamino)phenyl-2-phenyl-1,2-ethenedithiolato]nickel(II)

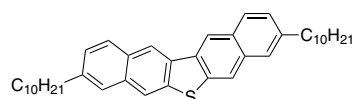
CAS No. : 38465-55-3
 Grade : > 98%
 Formula : C₃₂H₃₀N₂NiS₄
 M.W. : 629.55 g/mole



LT-S9621 | C10-DNT

3,9-Didecyldinaphtho[2,3-*b*:2',3'-*d*]thiophene

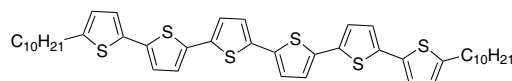
CAS No. : 1451918-60-7
 Grade : Sublimed > 99%
 Formula : C₄₀H₅₂S
 M.W. : 564.91 g/mole



LT-S9622 | C10-6T

5,5''''-Didecyl-2,2':5',2'':5'',2''':5''',2''''-sexithiophene

Grade : Sublimed > 99%
 Formula : C₄₄H₅₄S₆
 M.W. : 775.29 g/mole

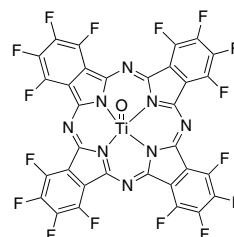


LT-S9624 | F16TiOPc

NEW

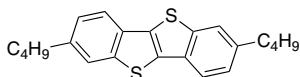
Titanium oxide-1,2,3,4,8,9,10,11,15,16,17,18,22,23,24,25-hexadecafluoro phthalocyanine

CAS No. : 115537-98-9
 Grade : Sublimed > 99%
 Formula : C₃₂F₁₆N₈O₄
 M.W. : 864.24 g/mole

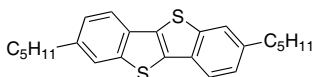


LT-S9629 | C4-BTBT2,7-Dibutyl[1]benzothieno[3,2-*b*]benzothiophene

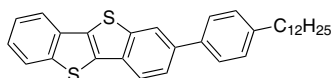
CAS No. : 1198290-40-2
 Grade : Sublimed >99%
 Formula : C₂₂H₂₄S₂
 M.W. : 352.56 g/mole

**LT-S9630** | C5-BTBT2,7-Dipentyl[1]benzothieno[3,2-*b*]benzothiophene

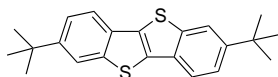
CAS No. : 1003601-76-0
 Grade : Sublimed >99%
 Formula : C₂₄H₂₈S₂
 M.W. : 380.61 g/mole

**LT-S9631** | C12-Ph-BTBT2-(4-Dodecylphenyl) [1]benzothieno[3,2-*b*]benzothiophene

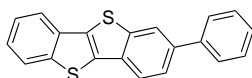
CAS No. : 1398395-77-1
 Grade : Sublimed >99%
 Formula : C₃₂H₃₆S₂
 M.W. : 484.76 g/mole

**LT-S9632** | ditBu-BTBT2,7-Di-*tert*-butyl-[1]benzothieno[3,2-*b*]benzothiophene

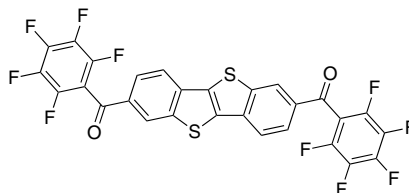
CAS No. : 1198290-42-4
 Grade : Sublimed >99%
 Formula : C₂₂H₂₄S₂
 M.W. : 352.56 g/mole

**LT-S9633** | Ph-BTBT2-Phenyl[1]benzothieno[3,2-*b*]benzothiophene

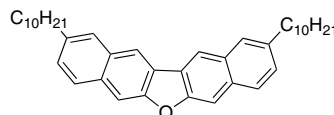
CAS No. : 1801421-69-1
 Grade : Sublimed >99%
 Formula : C₂₀H₁₂S₂
 M.W. : 316.44 g/mole

**LT-S9634** | D(PhFCO)-BTBT2,7-Diylbis((perfluorophenyl)methanone)[1]benzothieno[3,2-*b*]benzothiophene

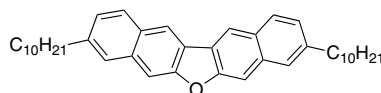
CAS No. : 2366264-40-4
 Grade : Sublimed >99%
 Formula : C₂₈H₆F₁₀O₂S₂
 M.W. : 628.46 g/mole

**LT-S9635** | C10-DNF-VV2,10-Didecyldinaphtho[2,3-*b*:2',3'-*d'*]furan

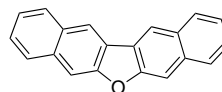
CAS No. : 1451918-45-8
 Grade : Sublimed >99%
 Formula : C₄₀H₅₂O
 M.W. : 548.84 g/mole

**LT-S9636** | C10-DNF-VW3,9-Didecyldinaphtho[2,3-*b*:2',3'-*d'*]furan

CAS No. : 1451918-51-6
 Grade : Sublimed >99%
 Formula : C₄₀H₅₂O
 M.W. : 548.84 g/mole

**LT-S9637** | DNF-VDinaphtho[2,3-*b*:2',3'-*d'*]furan

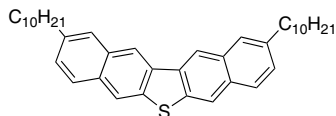
CAS No. : 242-51-3
 Grade : Sublimed >99%
 Formula : C₂₀H₁₂O
 M.W. : 268.31 g/mole



LT-S9638 | C10-DNT-VV

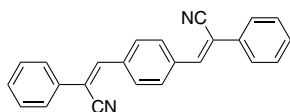
2,10-Didecyldinaphtho[2,3-b:2',3'-d]thiophene

CAS No. : 1451918-48-1
 Grade : Sublimed >99%
 Formula : C₄₀H₅₂S
 M.W. : 564.91 g/mole

**LT-S9640** | CNDSB**NEW**

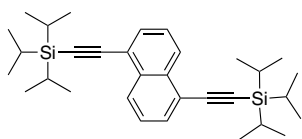
(2Z,2'Z)-3,3'-(1,4-phenylene)bis(2-phenylacrylonitrile)

CAS No : 58393-80-9
 Grade : >99%
 Formula : C₂₄H₁₆N₂
 M.W. : 332.4 g/mole

**LT-S9641** | 1,5-DTNA

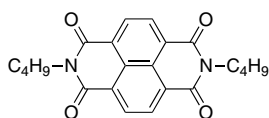
1,5-Bis((triisopropylsilyl)ethynyl)naphthalene

CAS No : 2762325-17-5
 Grade : >99%
 Formula : C₃₂H₄₈Si₂
 M.W. : 488.89 g/mole
 UV : 326 nm (in Toluene)
 PL : 554 nm (in Toluene)

**LT-S9642** | NTDA-C4H9**NEW**

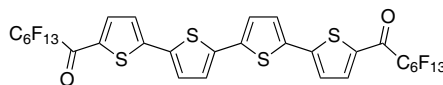
2,7-Dibutylbenzo[Imn][3,8]phenanthroline-1,3,6,8(2H,7H)-tetraone

Grade : Sublimed >99%
 Formula : C₂₂H₂₂N₂O₄
 M.W. : 378.42 g/mole

**LT-S9655** | DFHCO-4T**NEW**

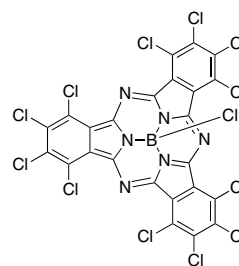
5,5"-Diperfluorohexylcarbonyl-2,2':5'2'':5'',2''-quaterthiophene

CAS No. : 796994-57-5
 Grade : Sublimed >99%
 Formula : C₃₀H₈F₂₆O₂S₄
 M.W. : 1022.6 g/mole

**LT-S9656** | Cl12BsubPc**NEW**

Dodecachloro subphthalocyanatoboron(III) chloride

CAS No : 163616-01-1
 Grade : >95%
 Formula : C₂₄BCl₁₃N₆
 M.W. : 844 g/mole

**LT-S9657** | F12BsubPc**NEW**

Dodecafluoro subphthalocyanatoboron(III) chloride

CAS No : 142710-55-2
 Grade : >95%
 Formula : C₂₄BClF₁₂N₆
 M.W. : 646.54 g/mole

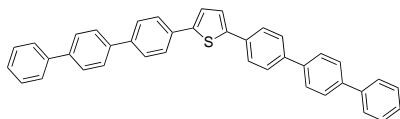


LT-S9663

NEW

2,5-Bis[4-(4-phenylphenyl)phenyl]thiophene

CAS No. :1257544-69-6
 Grade :Sublimed >99%
 Formula :C₄₀H₂₈S
 M.W. :540.72 g/mole

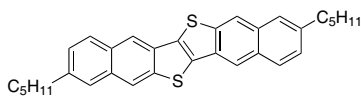


LT-S9664 C5-DNTT

NEW

2,9-Dipentylnaphtho[2,3-b]naphtho[2',3':4,5]thieno[2,3-d]thiophene

Grade :Sublimed >99%
 Formula :C₃₂H₃₂S₂
 M.W. :480.73 g/mole

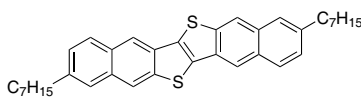


LT-S9665 C7-DNTT

NEW

2,9-Diheptylnaphtho[2,3-b]naphtho[2',3':4,5]thieno[2,3-d]thiophene

Grade :Sublimed >99%
 Formula :C₃₆H₄₀S₂
 M.W. :536.83 g/mole

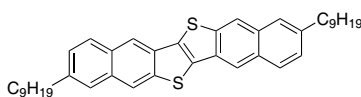


LT-S9666 C9-DNTT

NEW

2,9-Dinonylnaphtho[2,3-b]naphtho[2',3':4,5]thieno[2,3-d]thiophene

Grade :Sublimed >99%
 Formula :C₄₀H₄₈S₂
 M.W. :592.94 g/mole

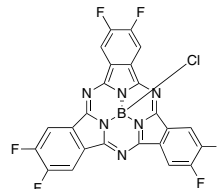


LT-S9668 F6-SubPC-Cl

NEW

Hexafluoro boron subphthalocyanine chloride

Grade :>95%
 Formula :C₂₄H₆BClF₆N₆
 UV :552 nm M.W. :538.6 g/mole
 HOMO :-5.8 eV
 LUMO :-3.6 eV
 Solvent :DCM

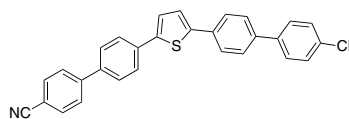


LT-S9669 BP1T-CN

NEW

2,5-Bis(4'-cyanobiphenyl-4-yl)thiophene

CAS No. :868403-91-2
 Grade :Sublimed >99%
 Formula :C₃₀H₁₈N₂S
 M.W. :438.54 g/mole

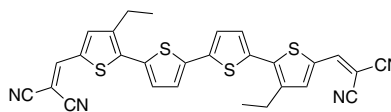


LT-S9681 DCV4T-Et2

NEW

2,2'-((3,3''-Diethyl-[2,2':5',2'':5'']-quaterthiophene)-5,5''-diyl)bis(methanylylidene)dimalononitrile

CAS No :1449383-43-0
 Grade :Sublimed >95%
 Formula :C₂₈H₁₈N₄S₄
 M.W. :538.73 g/mole



LT-S9684

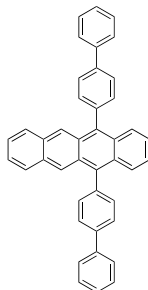
NEW

5,12-Di([1,1'-biphenyl]-4-yl)-naphthalene

CAS No :272459-50-4

Formula :C₄₂H₂₈

M.W. :532.67 g/mole



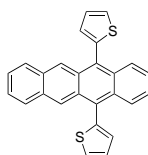
LT-S9685

NEW

5,12-Di(thiophen-2-yl)tetracene

Formula :C₂₆H₁₆S₂

M.W. :392.54 g/mole



LT-S9686

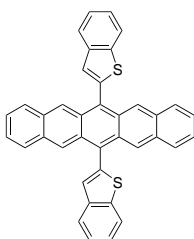
NEW

6,13-bis(benzo[b]thiophen-2-yl)pentacene

Grade :Sublimed >98%

Formula :C₃₈H₂₂S₂

M.W. :542.71 g/mole



LT-S9687

NEW

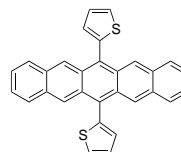
6,13-Di(2'-thienyl)pentacene

CAS No :849466-79-1

Grade :Sublimed >98%(NMR)

Formula :C₃₀H₁₈S₂

M.W. :442.59 g/mole



LT-S9688

TBA-An

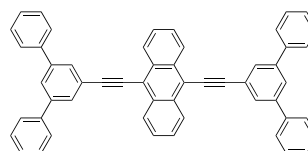
NEW

9,10-Bis([1,3'-diphenyl]-5'-phenylethynyl)anthracene

Grade :>99%

Formula :C₅₄H₃₄

M.W. :682.85 g/mole



LT-S9689

3PV-CF3

NEW

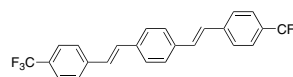
1,4-Bis[4-(trifluoromethyl)styryl]benzene

CAS No :955092-98-5

Grade :>99%

Formula :C₂₄H₁₆F₆

M.W. :418.37 g/mole



LT-S9697

F-F12BsubPc

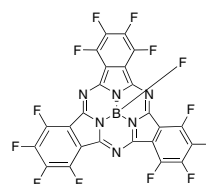
NEW

Dodecafluoro subphthalocyanatoboron(III) fluoride

Grade :>95%

Formula :C₂₄BF₁₃N₆

M.W. :630.09 g/mole



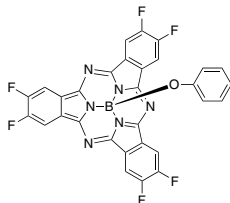
LT-S9698 | PhO-F6BsubPc **NEW**

Phenoxy-hexafluoro boronsubphthalocyanine

Grade : > 98%

Formula : $C_{30}H_{11}BF_6N_6O$

M.W. : 596.25 g/mole

**LT-S9699** | PhO-BsubPc **NEW**

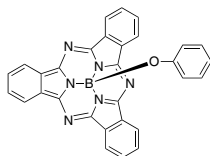
Phenoxysubphthalocyaninaboron

CAS No : 182575-04-8

Grade : > 98%

Formula : $C_{30}H_{17}BN_6O$

M.W. : 488.31 g/mole

**LT-S9700** | PhO-F12BsubPc **NEW**

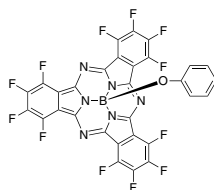
Phenoxydodecafluoro subphthalocyaninaboron

CAS No : 464933-03-7

Grade : > 98%

Formula : $C_{30}H_5BF_{12}N_6O$

M.W. : 704.19 g/mole

**LT-S9701** | F5PhO-F12BsubPc **NEW**

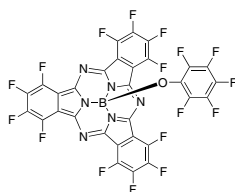
Pentafluorophenoxy-Dodecafluorosubphthalocyanato boron

CAS No : 1235758-94-7

Grade : > 98%

Formula : $C_{30}BF_{17}N_6O$

M.W. : 794.14 g/mole

**LT-S9702** | PhO-Cl12BsubPc **NEW**

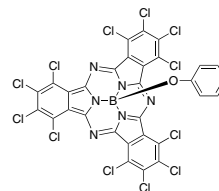
Phenoxy-dodecachloroboronsubphthalocyanine

CAS No : 1309389-84-1

Grade : > 98%

Formula : $C_{30}H_5BCl_{12}N_6O$

M.W. : 901.65 g/mole

**LT-S9703** | F5PhO-Cl6BsubPc **NEW**

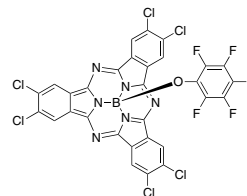
Pentafluorophenoxy-hexachloroboronsubphthalocyanine

CAS No : 1309391-30-7

Grade : > 98%

Formula : $C_{30}H_5BCl_6F_5N_6O$

M.W. : 784.93 g/mole

**LT-S9704** | F5PhO-F6BsubPc **NEW**

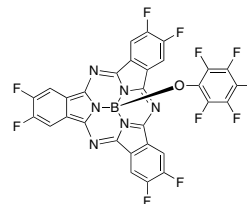
Pentafluorophenoxy-hexafluoroboronsubphthalocyanine

CAS No : 1680181-01-4

Grade : > 98%

Formula : $C_{30}H_6BF_{11}N_6O$

M.W. : 686.2 g/mole



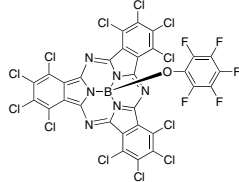
LT-S9705 | F5PhO-Cl12BsubPc **NEW**

Pentafluorophenoxy-dodecachloroboronsubphthalocyanine

Grade : > 98%

Formula : $C_{30}BCl_{12}F_5N_6O$

M.W. : 991.6 g/mole

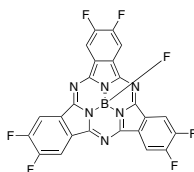
**LT-S9706** | F-F6BsubPc **NEW**

Hexafluoro subphthalocyanatoboron(III) fluoride

Grade : > 95%

Formula : $C_{24}H_6BF_7N_6$

M.W. : 522.14 g/mole

**LT-S9708** | BP1T **NEW**

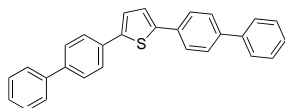
2,5-Bis(4-biphenyl)thiophene

CAS No. : 56316-86-0

Grade : Sublimed > 99%

Formula : $C_{28}H_{20}S$

M.W. : 388.52 g/mole

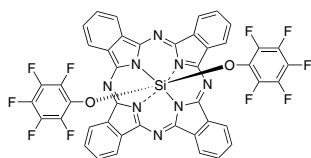
**LT-S9848** | F10-SiPc **NEW**

Bis(pentafluorophenoxy) silicon phthalocyanine

Grade : > 98%

Formula : $C_{44}H_{16}F_{10}N_8O_2Si$

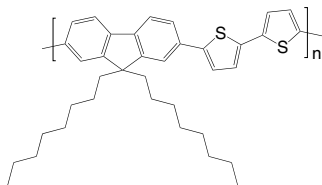
M.W. : 906.72 g/mole



LT-S979 | F8T2

Poly[(9,9-di-*n*-octylfluorenyl-2,7-diyl)-*alt*-2,2'-bithiophene-5,5'-diyl]

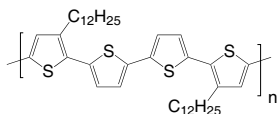
CAS No. : 210347-56-1
 Grade : Mw >20,000 (GPC)
 Formula : (C₃₇H₄₄S₂)_n
 UV : 454 nm (in THF)
 PL : 500 nm (in THF)
 Solubility : Soluble in CHCl₃, Chlorobenzene, Dichlorobenzene



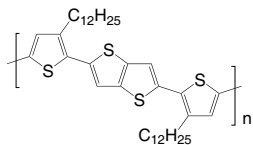
LT-S980 | PQT-12

Poly[bis(3-dodecyl-2-thienyl)-2,2'-dithiophene-5,5'-diyl]

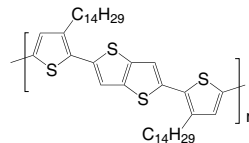
CAS No. : 827343-06-6
 Grade : Mw = 10,000 ~ 40,000 (GPC)
 Formula : (C₄₀H₅₆S₄)_n
 UV : 473 nm (in Toluene)
 Solubility : >5 mg/mL in CHCl₃

LT-S981 | PBTTT-C₁₂Poly[2,5-bis(3-dodecylthiophen-2-yl)thieno[3,2-*b*]thiophene]

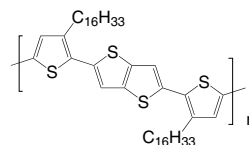
CAS No. : 888491-18-7
 Grade : Mw = 10,000~100,000 (GPC)
 Formula : (C₃₈H₅₄S₄)_n
 UV : 460 nm (in THF)
 PL : 557 nm (in THF)
 Solubility : >5 mg/mL in CHCl₃

LT-S982 | PBTTT-C₁₄Poly[2,5-bis(3-tetradecylthiophen-2-yl)thieno[3,2-*b*]thiophene]

CAS No. : 888491-19-8
 Grade : Mw = 10,000~100,000 (GPC)
 Formula : (C₄₂H₆₂S₄)_n
 UV : 466 nm (in THF)
 PL : 557 nm (in THF)
 Solubility : >5 mg/mL in CHCl₃

LT-S9060 | PBTTT-C₁₆Poly[2,5-bis(3-hexadecylthiophen-2-yl)thieno[3,2-*b*]thiophene]

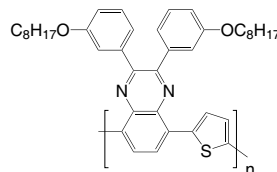
Grade : Mw = 10,000~100,000 (GPC)
 Formula : (C₄₆H₇₀S₄)_n
 UV : 466 nm (in THF)
 PL : 557 nm (in THF)
 Solubility : >5 mg/mL in CHCl₃



LT-S9091 | TQ1

Poly[2,3-bis-(3-octyloxyphenyl)quinoxaline-5,8-diyl-*alt*-thiophene-2,5-diyl]

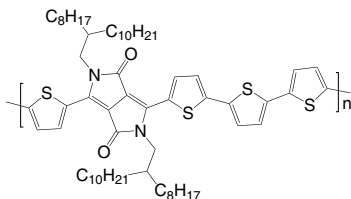
CAS No. : 565228-37-7
 Grade : Mw >20,000 (GPC)
 Formula : (C₄₀H₄₆N₂O₂S)_n
 Solubility : Soluble in CHCl₃, Chlorobenzene, Dichlorobenzene



LT-S9117 | PDQT

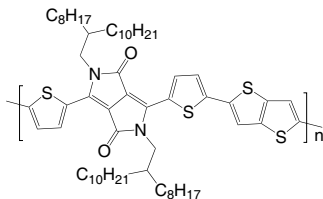
Poly(2,2'-[(2,5-bis(2-octyldodecyl)-3,6-dioxo-2,3,5,6-tetrahydropyrrolo[3,4-c]pyrrole-1,4-diyl)]dithiophene-5,5'-diyl-*alt*-2,2'-bithiophene-5,5'-diyl)

CAS No. : 1267540-03-3
 Grade : Mw > 30,000 (GPC)
 Formula : (C₆₂H₉₀N₂O₂S₄)_n
 UV : 810 nm (in CHCl₃)
 Solubility : Soluble in CHCl₃, Chlorobenzene, Dichlorobenzene

**LT-S9118** | PDBT-co-TT

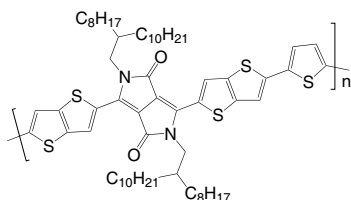
Poly(2,2'-[(2,5-bis(2-octyldodecyl)-3,6-dioxo-2,3,5,6-tetrahydropyrrolo[3,4-c]pyrrole-1,4-diyl)]dithiophene-5,5'-diyl-*alt*-thieno[3,2-b]thiophen-2,5-diyl)

CAS No. : 1260685-65-1
 Grade : Mw > 30,000 (GPC)
 Formula : (C₆₀H₈₈N₂O₂S₄)_n
 UV : 810 nm (in CHCl₃)
 Solubility : Soluble in CHCl₃, Chlorobenzene, Dichlorobenzene

**LT-S9119** | PDPPBT

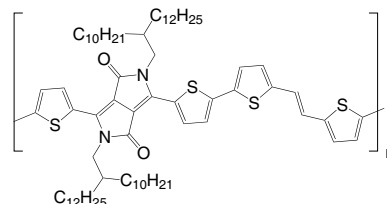
Poly(2,2'-[(2,5-bis(2-octyldodecyl)-3,6-dioxo-2,3,5,6-tetrahydropyrrolo[3,4-c]pyrrole-1,4-diyl)]dithiopheno[3,2-b]thiophene-5,5'-diyl-*alt*-thiophen-2,5-diyl)

CAS No. : 1270977-98-4
 Grade : Mw > 30,000 (GPC)
 Formula : (C₆₂H₈₈N₂O₂S₃)_n
 UV : 812 nm (in CHCl₃)
 Solubility : Soluble in CHCl₃, Chlorobenzene, Dichlorobenzene

**LT-S9133** | PDVT-10

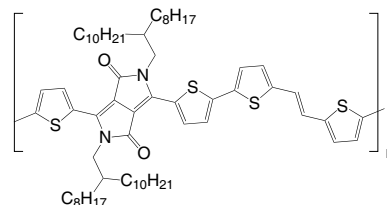
Poly(3,6-dithiophen-2-yl-2,5-di(2-decyltetradecyl)-pyrrolo[3,4-c]pyrrole-1,4-dione-*alt*-thienylenevinylene-2,5-yl)

CAS No. : 1442682-99-6
 Grade : Mw > 30,000 (GPC)
 Formula : (C₇₂H₁₀₈N₂O₂S₄)_n
 Solubility : Soluble in CHCl₃, Chlorobenzene, Dichlorobenzene

**LT-S9155** | PDVT-8

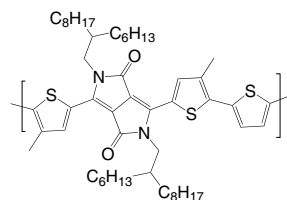
Poly(3,6-dithiophen-2-yl-2,5-di(2-octyldodecyl)pyrrolo[3,4-c]pyrrole-1,4-dione-*alt*-thienylenevinylene-2,5-yl)

CAS No. : 1403959-01-2
 Grade : Mw > 20,000 (GPC)
 Formula : (C₆₄H₉₂N₂O₂S₄)_n
 Solubility : Soluble in CHCl₃, Chlorobenzene, Dichlorobenzene

**LT-S9178** | PMDPP3T

Poly[[2,5-bis(2-hexyldodecyl)-2,3,5,6-tetrahydro-3,6-dioxopyrrolo[3,4-c]pyrrole-1,4-diyl]-*alt*-[3',3''-dimethyl-2,2':5',2''-terthiophene]-5,5'-diyl]

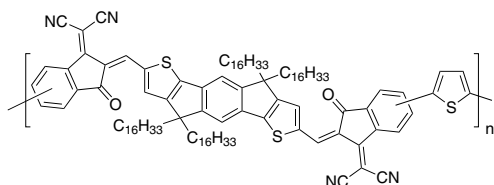
CAS No. : 1429119-71-0
 Grade : Mw > 30,000 (GPC)
 Formula : (C₅₂H₇₆N₂O₂S₃)_n
 UV : 830 nm (in CHCl₃)
 Solubility : Soluble in CHCl₃, Chlorobenzene, Dichlorobenzene



LT-S9591 | PZ1

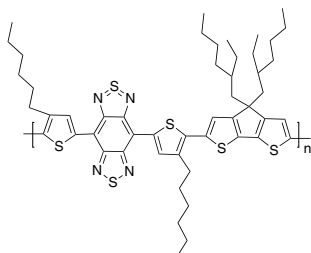
Poly{2,2'-((2Z,2'Z)-((4,4,9,9-tetrahexadecyl-4,9-dihydro-s-indaceno[1,2-b:5,6-b']dithiophene-2,7-diyl)bis(methanylylidene)bis(3-oxo-2,3-dihydro-1H-indene-2,1-diylidene)dimalononitrile-5,5'-diyl-*alt*-thiophen-2,5-diyl)}

CAS No. : 2177247-65-1
 Grade : Mw > 10000
 Formula : (C₁₁₀H₁₄₆N₄O₂S₃)_n

LT-S9619 | PBBTCD **NEW**

Poly[(4,7-bis(3-hexylthien-2-yl)- 2λ462-benzo[1,2-c:4,5-c']bis[1,2,5]thiadiazole-*alt*-(3,3-bis(2-ethylhexyl)-4H-cyclopenta[2,1-b:3,4-b']dithiophene)]

CAS No. : 1334032-14-2
 Grade : Mw > 10,000
 Formula : (C₅₁H₆₄N₄S₆)_n

LT-S9620 | PBBTSiD **NEW**

Poly[(4,7-bis(3-hexylthien-2-yl)- 2λ462-benzo[1,2-c:4,5-c']bis[1,2,5]thiadiazole-*alt*-(3,3'-di-n-octylsilylene-2,2'-bithiophene)]

CAS No. : 1334032-16-4
 Grade : Mw > 10,000
 Formula : (C₅₀H₆₄N₄S₆Si)_n

