

LT-PR0001 | DIBK

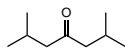
2,6-Dimethyl-4-heptanone

CAS No :108-83-8

Formula :C₉H₁₈O

M.W. :142.24 g/mole

Density :0.808 g/mL at 25 °C (lit.)

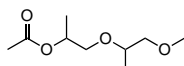
**LT-PR0002** | DPMA

Di(propylene glycol) methyl ether acetate

CAS No :88917-22-0

Formula :C₉H₁₈O₄

M.W. :190.24 g/mole

Density :0.97 g/cm³**LT-PR0003** |

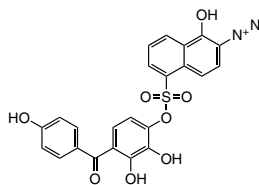
2,3,4,4'-Tetrahydroxybenzophenone

1,2-naphthoquinonediazido-5-sulfonate

CAS No :107761-81-9

Formula :C₂₃H₁₆N₂O₉S

M.W. :496.45 g/mole

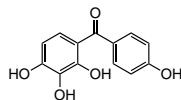
**LT-PR0004** | 4THBP

2,3,4,4'-Tetrahydroxybenzophenone

CAS No :31127-54-5

Formula :C₁₃H₁₀O₅

M.W. :246.21 g/mole

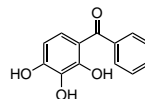
Density :1.526 g/cm³**LT-PR0005** |

2,3,4-Trihydroxybenzophenone

CAS No :1143-72-2

Formula :C₁₃H₁₀O₄

M.W. :230.22 g/mole

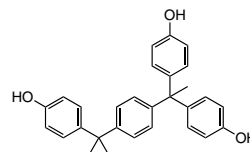
Density :1.413 g/cm³**LT-PR0006** |

4,4'-(1-(4-(2-(4-hydroxyphenyl)propan-2-yl)phenyl)ethane-1,1-diyldiphenol

CAS No :110726-28-8

Formula :C₂₉H₂₈O₃

M.W. :424.53 g/mole

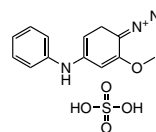
Density :1.186 g/cm³**LT-PR0007** |

4-Diazo-3-methoxydiphenylamine sulfate

CAS No :36305-05-2

Formula :C₁₃H₁₃N₃O₅S

M.W. :323.33 g/mole

Density :1.324 g/cm³

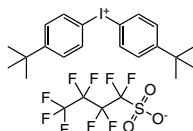
LT-PR0008 | DTBPIO-nF

Bis(4-tert-butylphenyl)iodonium perfluoro-1-butanesulfonate

CAS No :194999-85-4

Formula :C₂₄H₂₆F₉IO₃S

M.W. :692.42 g/mole

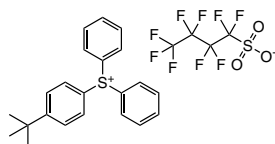
Density :1.183 g/cm³**LT-PR0009** | TBPDPs-PFBS

Diphenyl 4-tertbutylphenylsulfonium nonafluorobutanesulfonate

CAS No :258872-05-8

Formula :C₂₆H₂₃F₉O₃S₂

M.W. :618.57 g/mole

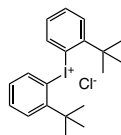
**LT-PR0010** |

Bis(tert-butylphenyl) Iodonium Chloride

CAS No :5421-53-4

Formula :C₂₀H₂₆ClI

M.W. :428.78 g/mole

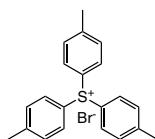
Density :0.914 g/cm³**LT-PR0011** |

Tris(4-methylphenyl)sulfonium bromide

CAS No :3744/11/4

Formula :C₂₁H₂₁BrS

M.W. :385.36 g/mole

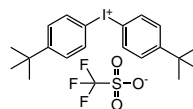
**LT-PR0012** |

Bis(4-tert-butylphenyl)iodonium triflate

CAS No :84563-54-2

Formula :C₂₁H₂₆F₃IO₃S

M.W. :542.39 g/mole

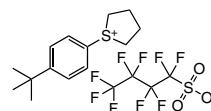
Density :1.462 g/cm³**LT-PR0013** |

4-t-butylphenyltetramethylenesulfonium perfluoro-1-butanesulfonate

CAS No :900188-13-8

Formula :C₁₈H₂₁F₉O₃S₂

M.W. :520.47 g/mole

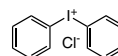
**LT-PR0014** |

Diphenyliodonium chloride

CAS No :1483-72-3

Formula :C₁₂H₁₀ClI

M.W. :316.56 g/mole

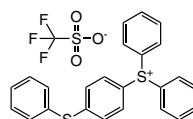
Density :1.255 g/cm³**LT-PR0015** |

(4-Phenylthiophenyl)diphenylsulfonium triflate

CAS No :111281-12-0

Formula :C₂₅H₁₉F₃O₃S₃

M.W. :520.61 g/mole

Density :1.29 g/cm³

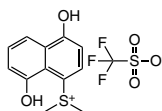
LT-PR0016

(4,8-Dihydroxy-1-naphthyl)dimethylsulfonium trifluoromethanesulfonate

CAS No :380848-57-7

Formula :C₁₃H₁₃F₃O₅S₂

M.W. :370.36 g/mole

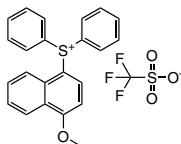


LT-PR0017

(4-Methoxy-1-naphthalenyl)diphenylsulfonium triflate

Formula :C₂₄H₁₉F₃O₄S₂

M.W. :492.53 g/mole

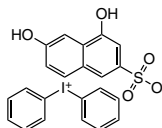


LT-PR0018

4,6-Dihydroxynaphthalene-2-sulfonate diphenyliodonium

Formula :C₂₂H₁₇IO₅S

M.W. :520.34 g/mole



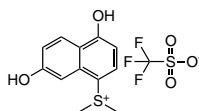
LT-PR0019

(4,7-Dihydroxy-1-naphthyl)dimethylsulfonium trifluoromethanesulfonate

CAS No :316821-98-4

Formula :C₁₃H₁₃F₃O₅S₂

M.W. :370.36 g/mole



LT-PR0020

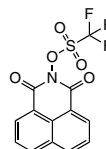
N-Trifluoromethanesulfonyl-1,8-naphthalimide

CAS No :85342-62-7

Formula :C₁₃H₆F₃NO₅S

M.W. :345.25 g/mole

Density :1.23 g/mL at 20 °C (lit.)

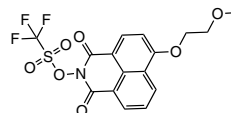


LT-PR0021

6-(2-Methoxyethoxy)-1,3-dioxo-1H-benzo[de]isoquinolin-2(3H)-yl trifluoromethanesulfonate

Formula :C₁₆H₁₂F₃NO₇S

M.W. :419.33 g/mole

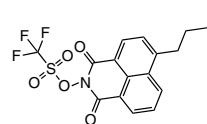


LT-PR0022

6-Butyl-1,3-dioxo-1H-benzo[de]isoquinolin-2(3H)-yl trifluoromethanesulfonate

Formula :C₁₇H₁₄F₃NO₅S

M.W. :401.36 g/mole

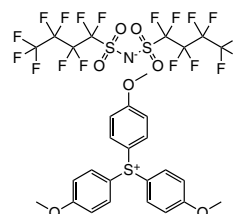


LT-PR0024

tris(4-methoxyphenyl)sulfonium bis(perfluorobutyl)sulfonyl amide

Formula :C₂₉H₂₇F₁₈NO₇S₃

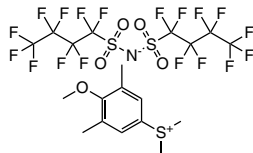
M.W. :933.65 g/mole



LT-PR0025

(4-methoxy-3,5-dimethylphenyl)dimethylsulfonium
bis((perfluorobutyl)sulfonyl)amide

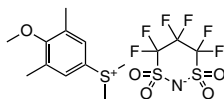
CAS No :2222384-16-7
Formula :C₁₉H₁₇F₁₈NO₅S₃
M.W. :777.51 g/mole



LT-PR0026

(4-methoxy-3,5-dimethylphenyl)dimethylsulfonium
4,4,5,5,6,6-hexafluoro-1,3,2-dithiazinan-2-ide
1,1,3,3-tetraoxide

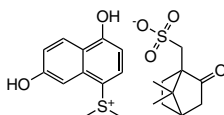
CAS No :2222384-17-8
Formula :C₁₄H₁₇F₆NO₅S₃
M.W. :489.47 g/mole



LT-PR0027

(4,7-Dihydroxy-1-naphthyl)dimethylsulfonium
camphorsulfonate

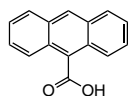
Formula :C₂₂H₂₈O₆S₂
M.W. :452.58 g/mole



LT-PR0028

Anthracene-9-carboxylic acid

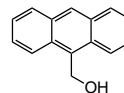
CAS No :723-62-6
Formula :C₁₅H₁₀O₂
M.W. :222.24 g/mole
Density :1.305 g/cm³



LT-PR0029

Anthracen-9-ylmethanol

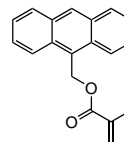
CAS No :1468-95-7
Formula :C₁₅H₁₂O
M.W. :208.26 g/mole
Density :1.214 g/cm³



LT-PR0030

9-anthracenylmethyl methacrylate

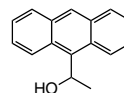
CAS No :31645-35-9
Grade :>98%
Formula :C₁₉H₁₆O₂
M.W. :276.33 g/mole
Density :1.159 g/cm³



LT-PR0031

1-(9-Anthracenyl)ethanol

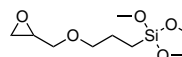
CAS No :7512-20-1
Formula :C₁₆H₁₄O
M.W. :222.28 g/mole
Density :1.177 g/cm³



LT-PR0032 Silane coupling agent KH-560

(3-Glycidoxypropyl)trimethoxysilane

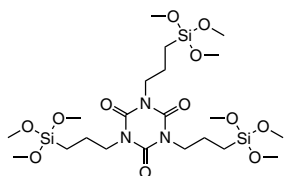
CAS No :2530-83-8
Formula :C₉H₂₀O₅Si
M.W. :236.34 g/mole
Density :1.047 g/cm³



LT-PR0033

Tris(3-(trimethoxysilyl)propyl)isocyanurate

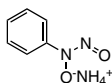
CAS No :26115-70-8
 Formula : $C_{21}H_{45}N_3O_{12}Si_3$
 M.W. :615.85 g/mole
 Density :1.131 g/cm³



LT-PR0034 Cupferron

N-Nitrosophenyl hydroxylamine ammonium salt

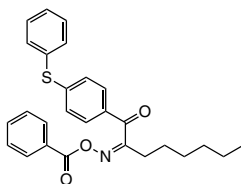
CAS No :135-20-6
 Formula : $C_6H_9N_3O_2$
 M.W. :155.15 g/mole
 Density :1.7 g/cm³



LT-PR0035 OXE-01

1-[4-(Phenylthio)phenyl]-1,2-octanedione 2-(O-benzoyloxime)

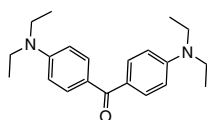
CAS No :253585-83-0
 Formula : $C_{27}H_{27}NO_3S$
 M.W. :445.57 g/mole
 Density :1.112 g/cm³



LT-PR0036 EMK

4,4'-Bis(diethylamino) benzophenone

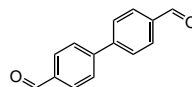
CAS No :90-93-7
 Formula : $C_{21}H_{28}N_2O$
 M.W. :324.46 g/mole
 Density :1.048 g/cm³



LT-PR0037

4,4'-Biphenyldicarboxaldehyde

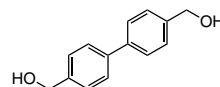
CAS No :66-98-8
 Formula : $C_{14}H_{12}O_2$
 M.W. :212.24 g/mole
 Density :1.18 g/cm³



LT-PR0038

4,4'-Bis(hydroxymethyl)biphenyl

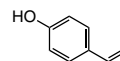
CAS No :1667-12-5
 Formula : $C_{14}H_{14}O_2$
 Density :1.174 g/cm³



LT-PR0039

4-Hydroxystyrene

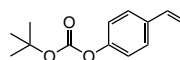
CAS No :2628-17-3
 Formula : C_8H_8O
 M.W. :120.15 g/mole
 Density :1.055 g/cm³



LT-PR0040 4-BOC-styrene

1,1-Dimethylethyl 4-ethenylphenylcarbonate

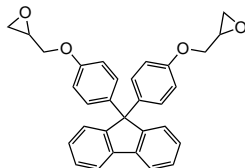
CAS No :87188-51-0
 Formula : $C_{13}H_{16}O_3$
 M.W. :220.26 g/mole
 Density :1.054 g/cm³



LT-PR0041 | BPGF

2,2'-(9H-Fluoren-9-ylidenebis(4,1-phenyleneoxymethylene)) bis-oxirane

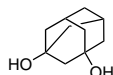
CAS No :47758-37-2
 Formula :C₃₁H₂₆O₄
 M.W. :462.54 g/mole
 Density :1.271 g/cm³



LT-PR0042

1,3-Dihydroxyadamantane

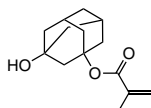
CAS No :5001-18-3
 M.W. :168.23 g/mole
 Density :1.368 g/cm³



LT-PR0043 | HAMA

1-Methacryloyloxy-3-adamantanol

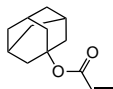
CAS No :115372-36-6
 Formula :C₁₄H₂₀O₃
 M.W. :236.31 g/mole



LT-PR0044

1-Adamantyl acrylate

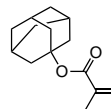
CAS No :121601-93-2
 Formula :C₁₃H₁₈O₂
 M.W. :206.28 g/mole
 Density :1.09 g/cm³



LT-PR0045 | ADAMA

1-Adamantyl methacrylate

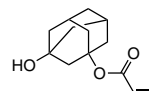
CAS No :16887-36-8
 Formula :C₁₄H₂₀O₂
 M.W. :220.31 g/mole
 Density :1.08 g/cm³



LT-PR0046

3-Hydroxy-1-adamantyl acrylate

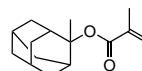
CAS No :216581-76-9
 Formula :C₁₃H₁₈O₃
 M.W. :222.28 g/mole
 Density :1.201 g/cm³



LT-PR0047 | MADMA

2-Methyl-2-adamantyl methacrylate

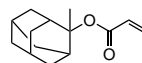
CAS No :177080-67-0
 Formula :C₁₅H₂₂O₂
 M.W. :234.33 g/mole
 Density :1.061g/cm³



LT-PR0048

2-Methyl-2-adamantyl acrylate

CAS No :249562-06-9
 Formula :C₁₄H₂₀O₂
 M.W. :220.31 g/mole



LT-PR0049 | EADMA

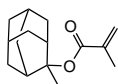
2-Ethyl-2-adamantyl methacrylate

CAS No :209982-56-9

Formula :C₁₆H₂₄O₂

M.W. :248.36 g/mole

Density :1.047 g/cm³



LT-PR0050 |

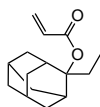
2-Ethyl-2-adamantyl acrylate

CAS No :303186-14-3

Formula :C₁₅H₂₂O₂

M.W. :234.33 g/mole

Density :1.06 g/cm³



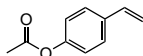
LT-PR0051 | ACS

4-Ethenylphenol acetate

CAS No :2628-16-2

Formula :C₁₀H₁₀O₂

M.W. :162.19 g/mole



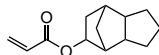
LT-PR0052 |

Dicyclopentanyl acrylate

CAS No :7398-56-3

Formula :C₁₃H₁₈O₂

M.W. :206.28 g/mole



LT-PR0053 |

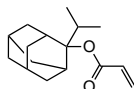
2-Isopropyl-2-acryloyloxyadamantane

CAS No :251564-67-7

Formula :C₁₆H₂₄O₂

M.W. :248.36 g/mole

Density :1.039 g/cm³



LT-PR0054 | PADMA

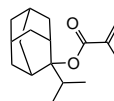
2-Isopropyl-2-adamantyl methacrylate

CAS No :297156-50-4

Formula :C₁₇H₂₆O₂

M.W. :262.39 g/mole

Density :0.994 g/cm³



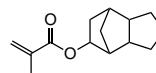
LT-PR0055 |

Octahydro-1H-4,7-methanoinden-5-yl methacrylate

CAS No :34759-34-7

Formula :C₁₄H₂₀O₂

M.W. :220.31 g/mole



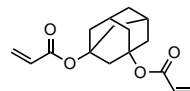
LT-PR0056 |

1,3-Adamantanediol diacrylate

CAS No :81665-82-9

Formula :C₁₆H₂₀O₄

M.W. :276.33 g/mole



LT-PR0057 |

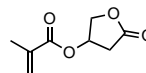
(5-oxoxolan-3-yl) 2-methylprop-2-enoate

CAS No :130224-95-2

Formula :C₈H₁₀O₄

M.W. :170.16 g/mole

Density :1.1 g/mL at 25 °C (lit.)



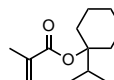
LT-PR0058 |

2-Propenoic acid, 2-methyl-, 1-(1-methylethyl)cyclohexyl ester

CAS No :811440-77-4

Formula :C₁₃H₂₂O₂

M.W. :210.31 g/mole



LT-PR0059 | ECPMA

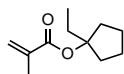
1-Ethylcyclopentyl methacrylate

CAS No :266308-58-1

Formula :C₁₁H₁₈O₂

M.W. :182.26 g/mole

Density :0.969 g/cm³



LT-PR0060 |

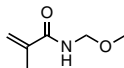
Methoxymethylmethacrylamide

CAS No :3644-12-0

Formula :C₆H₁₁NO₂

M.W. :129.16 g/mole

Density :0.958 g/cm³

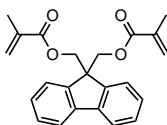


LT-PR0061 |

9H-Fluorene-9,9-dimethanol dimethacrylate

Formula :C₂₃H₂₂O₄

M.W. :362.42 g/mole



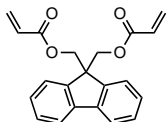
LT-PR0062 |

9,9-Bis[(acryloyloxy)methyl]fluorene

CAS No :583036-99-1

Formula :C₂₁H₁₈O₄

M.W. :334.37 g/mole



LT-PR0063 |

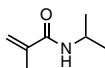
N-Isopropyl methacrylamide

CAS No :13749-61-6

Formula :C₇H₁₃NO

M.W. :127.18 g/mole

Density :0.875 g/cm³



LT-PR0064 |

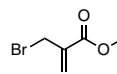
Methyl 2-(bromomethyl)acrylate

CAS No :4224-69-5

Formula :C₅H₇BrO₂

M.W. :179.01 g/mole

Density :1.489 g/cm³



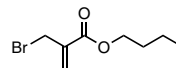
LT-PR0065 |

2-Bromomethyl-acrylic acid butyl ester

CAS No :170216-64-5

Formula :C₈H₁₃BrO₂

M.W. :221.09 g/mole



LT-PR0066 |

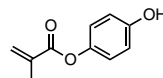
4-Hydroxyphenyl methacrylate

CAS No :31480-93-0

Formula :C₁₀H₁₀O₃

M.W. :178.18 g/mole

Density :1.603 g/cm³



LT-PR0067 |

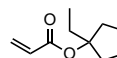
1-Ethylcyclopentyl acrylate

CAS No :326925-69-3

Formula :C₁₀H₁₆O₂

M.W. :168.23 g/mole

Density :1.272 g/cm³



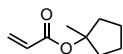
LT-PR0068

(1-Methylcyclopentyl) prop-2-enoate

CAS No :178889-49-1

Formula :C₉H₁₄O₂

M.W. :154.21 g/mole

Density :0.977 g/cm³

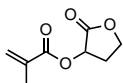
LT-PR0069

2-Oxotetrahydrofuran-3-yl methacrylate

CAS No :195000-66-9

Formula :C₈H₁₀O₄

M.W. :170.16 g/mole

Density :1.17 g/cm³

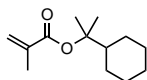
LT-PR0070

2-Cyclohexylpropan-2-yl methacrylate

CAS No :186585-56-8

Formula :C₁₃H₂₂O₂

M.W. :210.31 g/mole



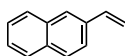
LT-PR0071

2-Vinylnaphthalene

CAS No :827-54-3

Formula :C₁₂H₁₀

M.W. :154.21 g/mole

Density :1.031 g/cm³

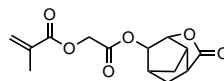
LT-PR0072

2-Oxo-2-((2-oxohexahydro-2H-3,5-methanocyclopenta[b]furan-6-yl)oxy)ethyl methacrylate

CAS No :347886-81-1

Formula :C₁₄H₁₆O₆

M.W. :280.27 g/mole

Density :1.62 g/cm³

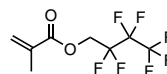
LT-PR0073

2,2,3,3,4,4,4-Heptafluorobutyl methacrylate

CAS No :13695-31-3

Formula :C₈H₇F₇O₂

M.W. :268.13 g/mole



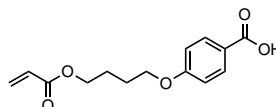
LT-PR0074 PBBA

4-(4-Prop-2-enyloxybutoxy)benzoic acid

CAS No :69260-42-0

Formula :C₁₄H₁₆O₅

M.W. :264.27 g/mole

Density :1.182 g/cm³

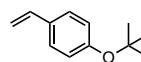
LT-PR0075

p-Tert-butylloxystyrene

CAS No :95418-58-9

Formula :C₁₂H₁₆O

M.W. :176.25 g/mole



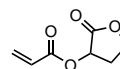
LT-PR0076

2-Oxotetrahydrofuran-3-yl acrylate

CAS No :328249-37-2

Formula :C₇H₈O₄

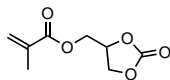
M.W. :156.14 g/mole



LT-PR0077

(2-oxo-1,3-dioxolan-4-yl)-methyl methacrylate

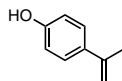
CAS No :13818-44-5
 Formula : $C_8H_{10}O_5$
 M.W. :186.16 g/mole
 Density :1.219 g/cm³



LT-PR0078

4-Isopropenylphenol

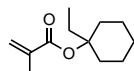
CAS No :4286-23-1
 Formula : $C_9H_{10}O$
 M.W. :134.17 g/mole
 Density :1.003 g/cm³



LT-PR0079 ECHMA

1-Ethylcyclohexyl methacrylate

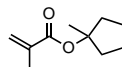
CAS No :274248-09-8
 Formula : $C_{12}H_{20}O_2$
 M.W. :196.29 g/mole
 Density :1.142 g/cm³



LT-PR0080 MCPMA

1-Methylcyclopentyl methacrylate

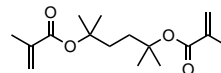
CAS No :178889-45-7
 Grade :> 98%
 Formula : $C_{10}H_{16}O_2$
 M.W. :168.23 g/mole



LT-PR0081

2,5-Dimethylhexane-2,5-diyl bis(2-methylacrylate)

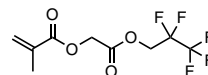
CAS No :131787-39-8
 Formula : $C_{16}H_{26}O_4$
 M.W. :282.38 g/mole



LT-PR0082

2-Oxo-2-(2,2,3,3,3-pentafluoropropoxy)ethyl methacrylate

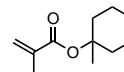
CAS No :1176273-16-7
 Formula : $C_9H_9F_5O_4$
 M.W. :276.16 g/mole
 Density :2.13 g/cm³



LT-PR0083 MCHMA

1-Methylcyclohexyl methacrylate

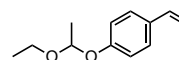
CAS No :76392-14-8
 Formula : $C_{11}H_{18}O_2$
 M.W. :182.26 g/mole
 Density :1.611 g/cm³



LT-PR0084

1-(1-Ethoxyethoxy)-4-vinylbenzene

CAS No :157057-20-0
 Formula : $C_{12}H_{16}O_2$
 M.W. :192.25 g/mole
 Density :0.983 g/cm³



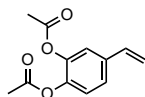
LT-PR0085

3,4-Diacetoxystyrene

CAS No :57142-64-0

Formula :C₁₂H₁₂O₄

M.W. :220.22 g/mole

Density :1.29 g/cm³

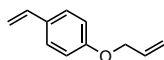
LT-PR0086

4-Allyloxystyrene

CAS No :16215-47-7

Formula :C₁₁H₁₂O

M.W. :160.21 g/mole



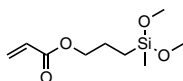
LT-PR0087

(3-Acryloxypropyl)methyldimethoxysilane

CAS No :13732-00-8

Formula :C₉H₁₈O₄Si

M.W. :218.32 g/mole



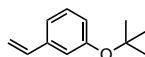
LT-PR0088

1-(1,1-Dimethylethoxy)-3-ethenylbenzene

CAS No :105612-79-1

Formula :C₁₂H₁₆O

M.W. :176.25 g/mole

Density :0.933 g/cm³

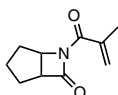
LT-PR0089

6-Methacryloyl-6-azabicyclo[3.2.0]heptan-7-one

CAS No :1267624-16-7

Formula :C₁₀H₁₃NO₂

M.W. :179.22 g/mole



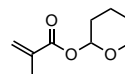
LT-PR0090 THPMA

Tetrahydropyranyl methacrylate

CAS No :52858-59-0

Formula :C₉H₁₄O₃

M.W. :170.21 g/mole

Density :1.2 g/cm³

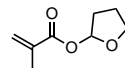
LT-PR0091

2-Tetrahydrofuryl methacrylate

CAS No :15895-80-4

Formula :C₈H₁₂O₃

M.W. :156.18 g/mole

Density :1.293 g/cm³

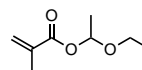
LT-PR0092

1-Ethoxyethyl methacrylate

CAS No :51920-52-6

Formula :C₈H₁₄O₃

M.W. :158.19 g/mole

Density :1.3~1.4 g/cm³

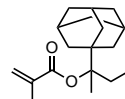
LT-PR0093

1-Methyl-1-ethyl-1-adamantylmethanol methacrylate

CAS No :325991-26-2

Formula :C₁₈H₂₈O₂

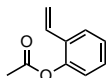
M.W. :276.41 g/mole



LT-PR0094

2-Acetoxystyrene

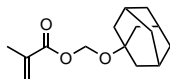
CAS No :63600-35-1
 Formula :C₁₀H₁₀O₂
 M.W. :162.18 g/mole
 Density :1.07 g/cm³



LT-PR0095

(adamantan-1-yloxy)methyl methacrylate

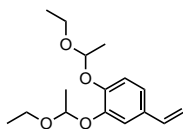
CAS No :863198-25-8
 Formula :C₁₅H₂₂O₃
 M.W. :250.33 g/mole



LT-PR0096

4-Ethenyl-1,2-bis(1-ethoxyethoxy)-benzene

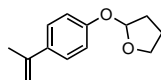
CAS No :186768-92-3
 Formula :C₁₆H₂₄O₄
 M.W. :280.36 g/mole



LT-PR0097

Tetrahydro-2-[4-(1-methylethenyl)phenoxy]furan

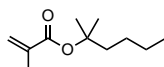
CAS No :214531-13-2
 Formula :C₁₃H₁₆O₂
 M.W. :204.26 g/mole



LT-PR0098 P BuMA

2-methylhexan-2-yl methacrylate

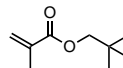
CAS No :1004549-78-3
 Formula :C₁₁H₂₀O₂
 M.W. :184.28 g/mole



LT-PR0099 NPMA

Neopentyl methacrylate

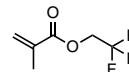
CAS No :2397-76-4
 Formula :C₉H₁₆O₂
 M.W. :156.22 g/mole
 Density :0.89 g/cm³



LT-PR0100 EFMA

2,2,2-Trifluoroethyl methacrylate

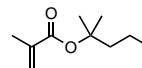
CAS No :352-87-4
 Formula :C₆H₇F₃O₂
 M.W. :168.11 g/mole
 Density :1.181 g/cm³



LT-PR0101 EBuMA

2-Methyl-2-Propenoic Acid 1,1-Dimethylbutyl Ester

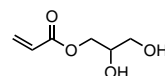
CAS No :100472-88-6
 Formula :C₁₀H₁₈O₂
 M.W. :170.25 g/mole



LT-PR0102

2,3-dihydroxypropyl prop-2-enoate

CAS No :10095-20-2
 Formula :C₆H₁₀O₄
 M.W. :146.14 g/mole
 Density :1.202 g/cm³



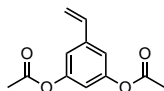
LT-PR0104

3,5-diacetoxystyrene

CAS No :155222-48-3

Formula :C₁₂H₁₂O₄

M.W. :220.22 g/mole

Density :1.155 g/cm³

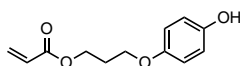
LT-PR0105

3-(4-Hydroxyphenoxy)propyl acrylate

CAS No :1092853-38-7

Formula :C₁₂H₁₄O₄

M.W. :222.24 g/mole



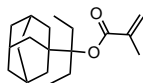
LT-PR0106

1,1-diethyl-1-adamantylmethanol methacrylate

CAS No :325991-24-0

Formula :C₁₉H₃₀O₂

M.W. :290.44 g/mole



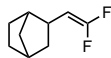
LT-PR0107

2-(2,2-Difluoroethyl)bicyclo[2.2.1]heptane

CAS No :123455-94-7

Formula :C₉H₁₂F₂

M.W. :158.19 g/mole

Density :0.82 g/cm³

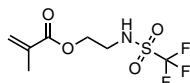
LT-PR0108

2-Trifluoromethanesulfonylaminoethyl methacrylate

CAS No :314756-98-4

Formula :C₇H₁₀F₃NO₄S

M.W. :261.22 g/mole



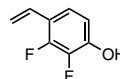
LT-PR0109

2,3-Difluoro-4-vinylphenol

CAS No :343305-64-6

Formula :C₈H₆F₂O

M.W. :156.13 g/mole



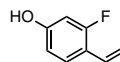
LT-PR0110

3-Fluoro-4-vinylphenol

CAS No :646058-20-0

Formula :C₈H₇FO

M.W. :138.14 g/mole



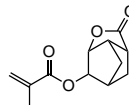
LT-PR0111

2-Oxohexahydro-2H-3,5-methanocyclopenta[b]furan-6-yl Methacrylate

CAS No :254900-07-7

Formula :C₁₂H₁₄O₄

M.W. :222.24 g/mole



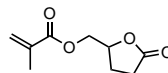
LT-PR0112

(5-Oxotetrahydrofuran-2-yl)methyl methacrylate

CAS No :156938-09-9

Formula :C₉H₁₂O₄

M.W. :184.19 g/mole



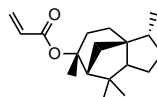
LT-PR0113

(3R,3aS,6R,7R,8aS)-octahydro-3,6,8,8-tetramethyl-1H-3a,7-methanoazulen-6-yl ester

CAS No :132603-00-0

Formula :C₁₈H₂₈O₂

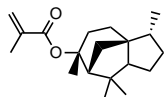
M.W. :276.41 g/mole



LT-PR0114

(3R,3aS,6R,7R)-3,6,8,8-tetramethyloctahydro-1H-3a,7-methanoazulen-6-yl methacrylate

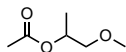
CAS No :132603-01-1
 Formula :C₁₉H₃₀O₂
 M.W. :290.44 g/mole



P213000000 PGMEA

1-Methoxy-2-propyl acetate

CAS No :108-65-6
 Formula :C₆H₁₂O₃
 M.W. :132.16 g/mole
 Density :0.959 g/cm³



T214000000 TPS-PFBS

Triphenylsulfonium perfluoro-1-butanesulfonate

CAS No :144317-44-2
 Formula :C₂₂H₁₆F₉O₃S₂⁺
 M.W. :563.48 g/mole
 Density :1.066 g/cm³

