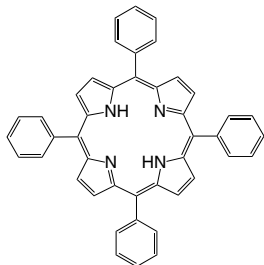


LT-D0001 | H₂TTP

meso-Tetraphenylporphine

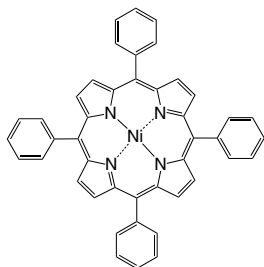
CAS No. : 917-23-7
 Grade : >98% (HPLC)
 Formula : C₄₄H₃₀N₄
 M.W. : 614.75 g/mole
 UV : 415 nm (in CH₂Cl₂)



LT-D0002 | NiTPP

Nickel(II) *meso*-tetraphenylporphine

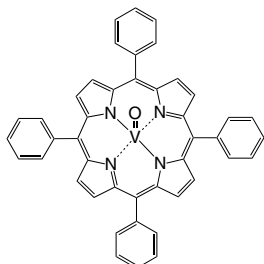
CAS No. : 14172-92-0
 Grade : >98% (NMR)
 Formula : C₄₄H₂₈N₄Ni
 M.W. : 671.41 g/mole



LT-D0003

Vanadyl *meso*-tetraphenylporphine

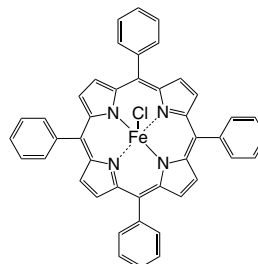
CAS No. : 14705-63-6
 Grade : >97% (HPLC)
 Formula : C₄₄H₂₈N₄O
 M.W. : 679.66 g/mole
 UV : 423 nm (in THF)



LT-D0004

Iron(III) *meso*-tetraphenylporphine chloride

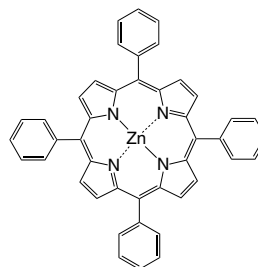
CAS No. : 16456-81-8
 Grade : >98% (HPLC)
 Formula : C₄₄H₂₈ClFeN₄
 M.W. : 704.02 g/mole



LT-D0005 | ZnTPP

Zinc(II) *meso*-tetraphenylporphine

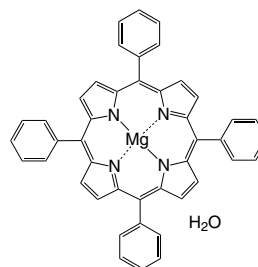
CAS No. : 14074-80-7
 Grade : >98% (HPLC)
 Formula : C₄₄H₂₈N₄Zn
 M.W. : 678.11 g/mole



LT-D0006

Magnesium(II) *meso*-tetraphenylporphine hydrate

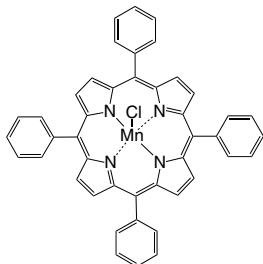
CAS No. : 14640-21-2
 Grade : >95% (NMR)
 Formula : C₄₄H₃₀MgN₄O
 M.W. : 655.04 g/mole



LT-D0007

Manganese(III) *meso*-tetraphenylporphine chloride

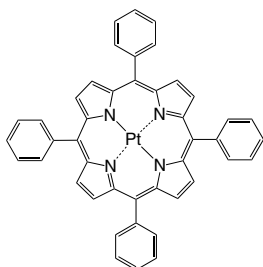
CAS No. : 32195-55-4
 Grade : >98% (NMR)
 Formula : $C_{44}H_{28}ClMnN_4$
 M.W. : 703.11 g/mole



LT-D0008

Platinum(II) *meso*-tetraphenylporphine

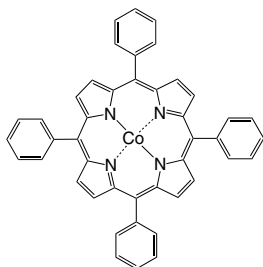
CAS No. : 14187-14-5
 Grade : >98% (HPLC)
 Formula : $C_{44}H_{28}N_4Pt$
 M.W. : 807.8 g/mole



LT-D0009

Cobalt(II) *meso*-tetraphenylporphine

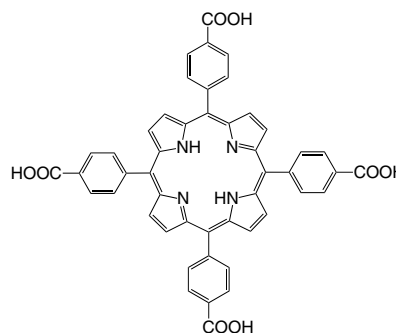
CAS No. : 14172-90-8
 Grade : >98% (HPLC)
 Formula : $C_{44}H_{28}CoN_4$
 M.W. : 671.65 g/mole



LT-D0010

H_2 TCPP
meso-Tetra(4-carboxyphenyl)porphine

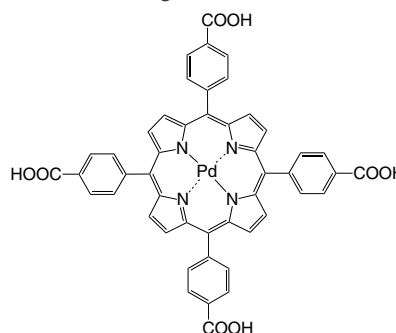
CAS No. : 14609-54-2
 Grade : >97% (HPLC)
 Formula : $C_{48}H_{30}N_4O_8$
 M.W. : 790.79 g/mole
 UV : 411 nm (in CH_2Cl_2)



LT-D0011

Palladium(II) *meso*-tetra(4-carboxyphenyl)porphine

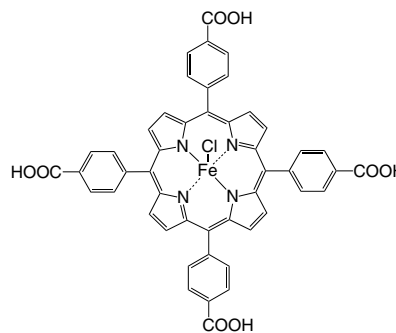
CAS No. : 94288-44-5
 Grade : >95% (NMR)
 Formula : $C_{48}H_{28}N_4O_8Pd$
 M.W. : 895.18 g/mole



LT-D0012

Iron(III) *meso*-tetra(4-carboxyphenyl)porphine chloride

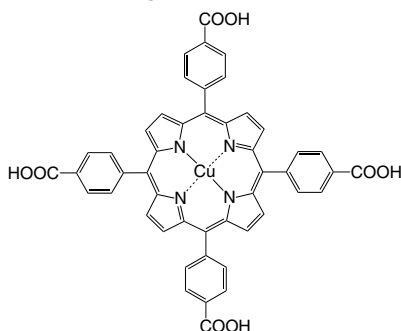
CAS No. : 55266-17-6
 Grade : >95%
 Formula : $C_{48}H_{28}ClFeN_4O_8$
 M.W. : 880.06 g/mole



LT-D0013 | CuTCPP

Copper(II) *meso*-tetra(4-carboxyphenyl)porphine

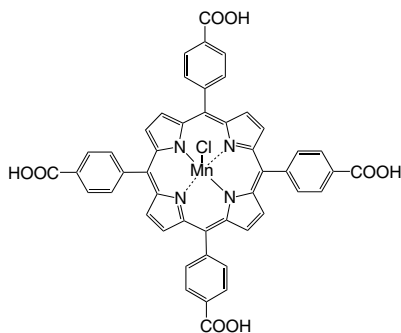
CAS No. : 130726-41-9
 Grade : >98% (NMR)
 Formula : $C_{48}H_{28}CuN_4O_8$
 M.W. : 852.3 g/mole



LT-D0014 |

Manganese(III) *meso*-tetra(4-carboxyphenyl)porphine chloride

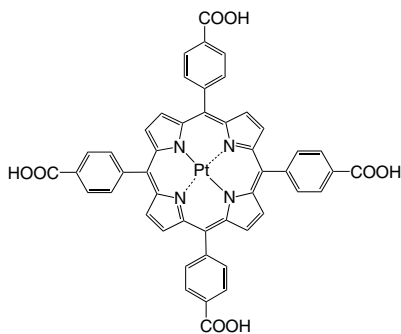
CAS No. : 55266-18-7
 Grade : >98% (NMR)
 Formula : $C_{48}H_{28}ClMnN_4O_8$
 M.W. : 879.15 g/mole



LT-D0015 | PtTCPP

Platinum(II) *meso*-tetra(4-carboxyphenyl)porphine

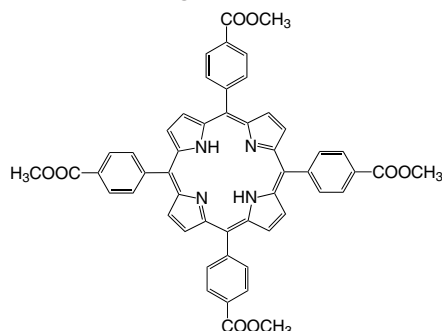
CAS No. : 94288-45-6
 Grade : >98% (NMR)
 Formula : $C_{48}H_{28}N_4O_8Pt$
 M.W. : 983.84 g/mole



LT-D0016 |

meso-Tetra(4-carboxyphenyl)porphine tetramethyl ester

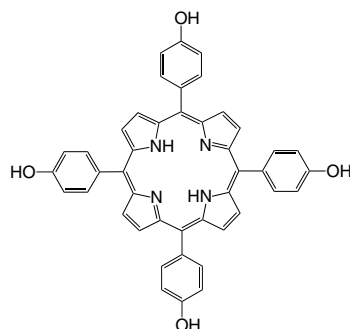
CAS No. : 22112-83-0
 Grade : >98% (NMR)
 Formula : $C_{52}H_{38}N_4O_8$
 M.W. : 846.88 g/mole



LT-D0017 |

meso-Tetra(*p*-hydroxyphenyl)porphine

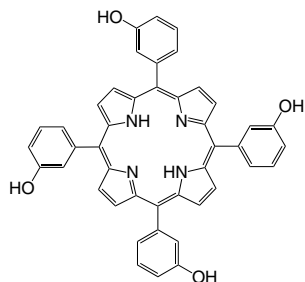
CAS No. : 51094-17-8
 Grade : >98% (NMR)
 Formula : $C_{44}H_{30}N_4O_4$
 M.W. : 678.73 g/mole
 UV : 421 nm (in CH_2Cl_2)



LT-D0018 |

meso-Tetra(3-hydroxyphenyl)porphine

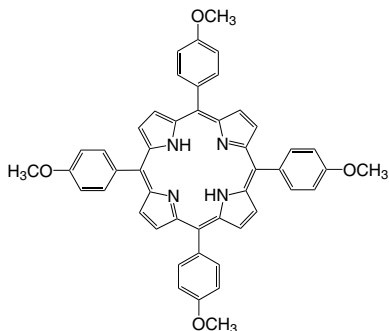
CAS No. : 22112-79-4
 Grade : >98% (NMR)
 Formula : $C_{44}H_{30}N_4O_4$
 M.W. : 678.73 g/mole



LT-D0019

meso-Tetra(4-methoxyphenyl)porphine

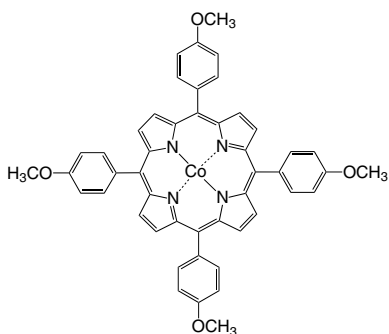
CAS No. : 22112-78-3
 Grade : >98% (NMR)
 Formula : $C_{48}H_{38}N_4O_4$
 M.W. : 734.86 g/mole
 UV : 424 nm (in CH_2Cl_2)



LT-D0020

Cobalt(II) *meso*-Tetra(4-methoxyphenyl)porphine

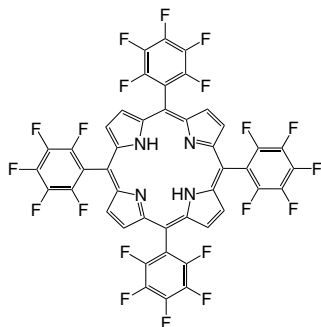
CAS No. : 28903-71-1
 Grade : >98% (NMR)
 Formula : $C_{48}H_{36}CoN_4O_4$
 M.W. : 791.77 g/mole



LT-D0021

meso-Tetra(pentafluorophenyl)porphine

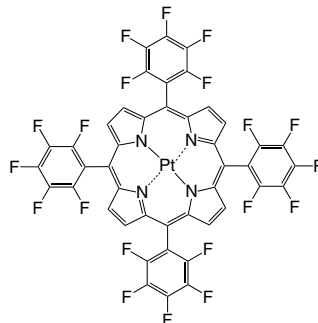
CAS No. : 25440-14-6
 Grade : >98% (HPLC)
 Formula : $C_{44}H_{10}F_{20}N_4$
 M.W. : 974.56 g/mole
 UV : 416 nm (in CH_2Cl_2)



LT-D0022

Platinum(II) *meso*-tetra(pentafluorophenyl)porphine

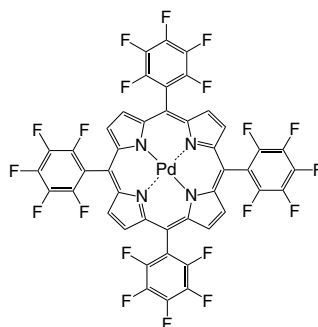
CAS No. : 109781-47-7
 Grade : >98% (HPLC)
 Formula : $C_{44}H_8F_{20}N_4Pt$
 M.W. : 1167.61 g/mole



LT-D0023

Palladium(II) *meso*-tetra(pentafluorophenyl)porphine

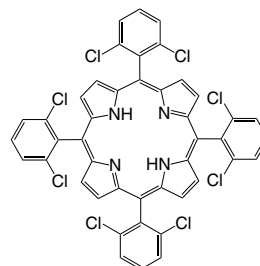
CAS No. : 72076-09-6
 Grade : >98% (NMR)
 Formula : $C_{44}H_8F_{20}N_4Pd$
 M.W. : 1078.95 g/mole
 UV : 400 nm (in Acetone)



LT-D0024

meso-Tetra(*o*-dichlorophenyl)porphine

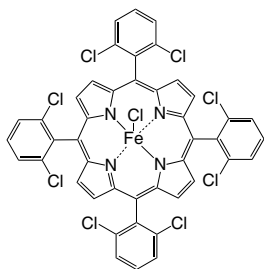
CAS No. : 37083-37-7
 Grade : >98% (NMR)
 Formula : $C_{44}H_{22}Cl_8N_4$
 M.W. : 890.29 g/mole



LT-D0025

Iron(III) *meso*-tetra(*o*-dichlorophenyl)porphine chloride

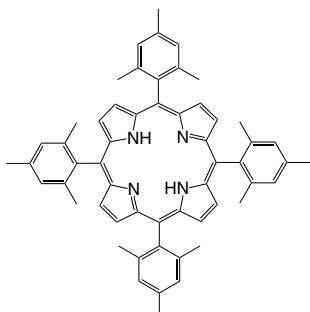
CAS No. : 91042-27-2
 Grade : >98% (NMR)
 Formula : $C_{44}H_{20}Cl_9FeN_4$
 M.W. : 979.58 g/mole



LT-D0026

meso-Tetra(2,4,6-trimethylphenyl)porphine

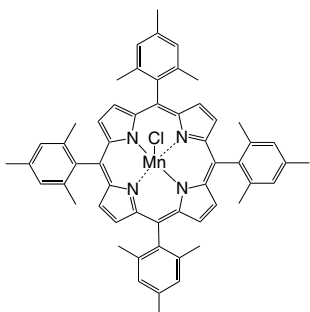
CAS No. : 56396-12-4
 Grade : >98% (NMR)
 Formula : $C_{56}H_{54}N_4$
 M.W. : 783.08 g/mole



LT-D0027

Manganese(III) *meso*-tetra(2,4,6-trimethylphenyl)porphine chloride

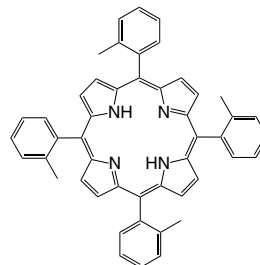
CAS No. : 85939-49-7
 Grade : >95% (NMR)
 Formula : $C_{56}H_{52}ClMnN_4$
 M.W. : 871.43 g/mole



LT-D0028

meso-Tetra(2-methylphenyl)porphine

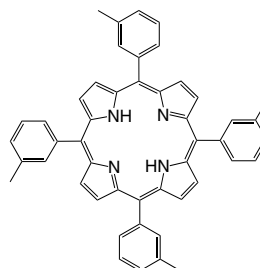
CAS No. : 37083-40-2
 Grade : >98% (NMR)
 Formula : $C_{48}H_{38}N_4$
 M.W. : 670.84 g/mole



LT-D0029

meso-Tetra(3-methylphenyl)porphine

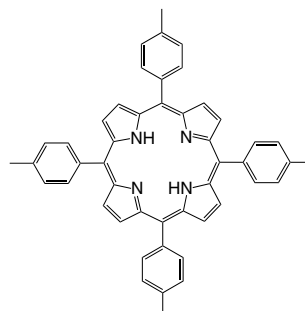
CAS No. : 50849-45-1
 Grade : >98% (NMR)
 Formula : $C_{48}H_{38}N_4$
 M.W. : 670.84 g/mole



LT-D0030

meso-Tetra(4-methylphenyl)porphine

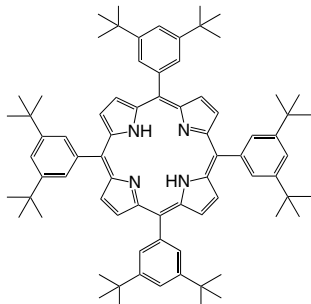
CAS No. : 14527-51-6
 Grade : >98% (NMR)
 Formula : $C_{48}H_{38}N_4$
 M.W. : 670.84 g/mole



LT-D0031

meso-Tetra(3,5-di-*t*-butylphenyl)porphine

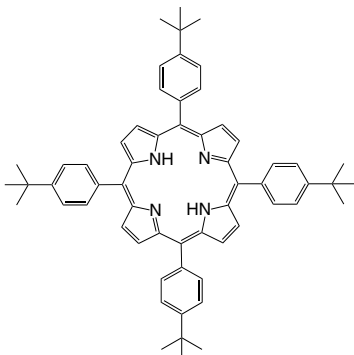
CAS No. : 89372-90-7
 Grade : >98% (NMR)
 Formula : $C_{76}H_{94}N_4$
 M.W. : 1063.59 g/mole



LT-D0032

meso-Tetra(4-*tert*-butylphenyl)porphine

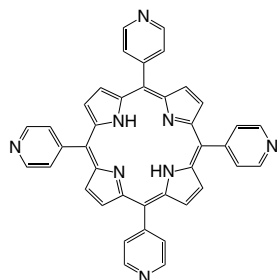
CAS No. : 110452-48-7
 Grade : >98% (NMR)
 Formula : $C_{60}H_{62}N_4$
 M.W. : 839.16 g/mole



LT-D0033

meso-Tetra(4-pyridyl)porphine

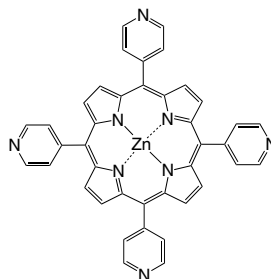
CAS No. : 16834-13-2
 Grade : >98% (NMR)
 Formula : $C_{40}H_{26}N_8$
 M.W. : 618.69 g/mole
 Density : $1.4 \pm 0.1 \text{ g/cm}^3$



LT-D0034

Zinc(II) *meso*-tetra(4-pyridyl)porphine

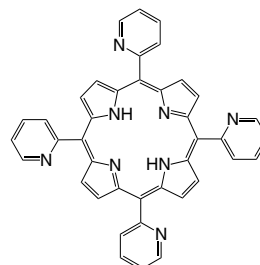
CAS No. : 31183-11-6
 Grade : >98% (NMR)
 Formula : $C_{40}H_{24}N_8Zn$
 M.W. : 682.06 g/mole



LT-D0035

meso-Tetra(2-pyridyl)porphine

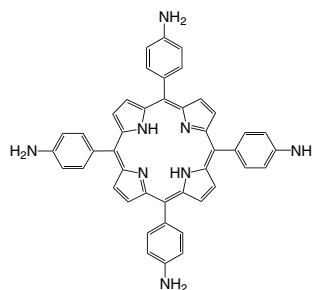
CAS No. : 40904-90-3
 Grade : >98% (NMR)
 Formula : $C_{40}H_{26}N_8$
 M.W. : 618.69 g/mole



LT-D0036 H2TAPP

meso-Tetra(4-aminophenyl)porphine

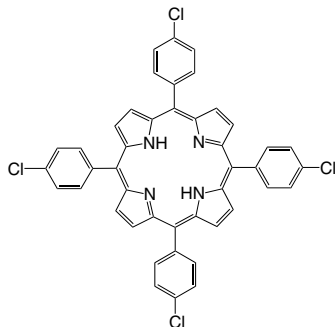
CAS No. : 22112-84-1
 Grade : >98% (NMR)
 Formula : $C_{44}H_{34}N_8$
 M.W. : 674.81 g/mole



LT-D0037

meso-Tetra(4-chlorophenyl)porphine

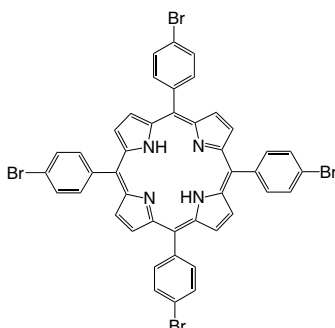
CAS No. : 22112-77-2
 Grade : >98% (NMR)
 Formula : $C_{44}H_{26}Cl_4N_4$
 M.W. : 752.52 g/mole



LT-D0038

meso-Tetra(4-bromophenyl)porphine

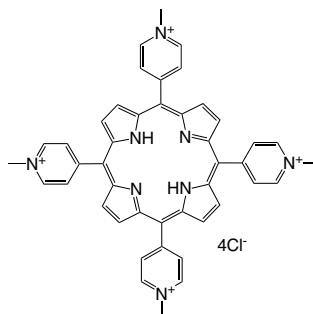
CAS No. : 29162-73-0
 Grade : >98% (HPLC)
 Formula : $C_{44}H_{26}Br_4N_4$
 M.W. : 930.32 g/mole



LT-D0039

meso-Tetra(*N*-methyl-4-pyridyl)porphine tetrachloride

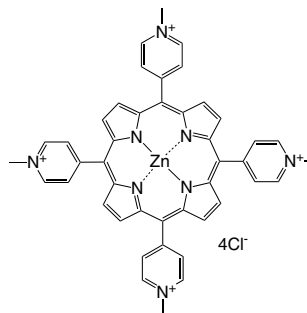
CAS No. : 92739-63-4
 Grade : >95% (NMR)
 Formula : $C_{44}H_{38}Cl_4N_8$
 M.W. : 820.64 g/mole



LT-D0040

Zinc(II) *meso*-tetra(*N*-methyl-4-pyridyl)porphine tetrachloride

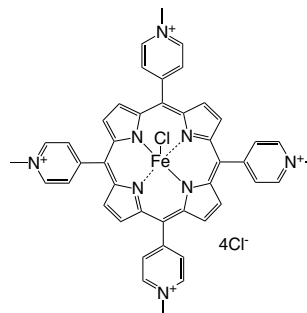
CAS No. : 28850-44-4
 Grade : >95% (NMR)
 Formula : $C_{44}H_{36}Cl_4N_8Zn$
 M.W. : 884.03 g/mole



LT-D0041

Iron(III) *meso*-tetra(*N*-methyl-4-pyridyl)porphine pentachloride

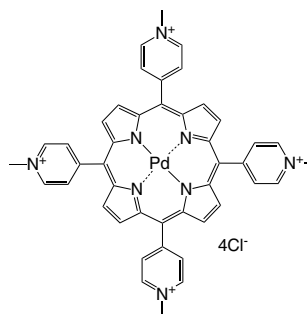
CAS No. : 133314-07-5
 Grade : >95% (NMR)
 Formula : $C_{44}H_{36}Cl_5FeN_8$
 M.W. : 909.92 g/mole



LT-D0042

Palladium(II) *meso*-tetra(*N*-methyl-4-pyridyl)porphine tetrachloride

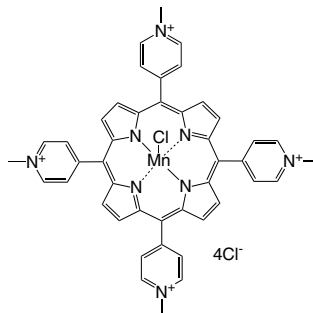
CAS No. : 110314-07-3
 Grade : >95% (NMR)
 Formula : $C_{44}H_{36}Cl_4N_8Pd$
 M.W. : 925.04 g/mole



LT-D0043

Manganese(III) *meso*-tetra(*N*-methyl-4-pyridyl)porphine pentachloride

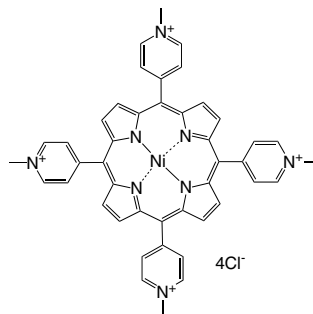
CAS No. : 125565-45-9
 Grade : >95% (NMR)
 Formula : $C_{44}H_{36}Cl_5MnN_8$
 M.W. : 909.01 g/mole
 UV : 462 nm (in CH_2Cl_2)



LT-D0044

Nickel(II) *meso*-tetra(*N*-methyl-4-pyridyl)porphine tetrachloride

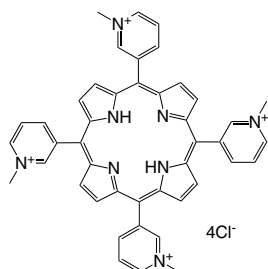
CAS No. : 79407-86-6
 Grade : >95% (NMR)
 Formula : $C_{44}H_{36}Cl_4NiN_8$
 M.W. : 877.32 g/mole



LT-D0045

meso-Tetra(*N*-methyl-3-pyridyl)porphine tetrachloride

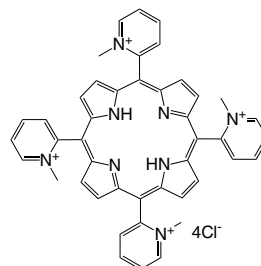
CAS No. : 94343-62-1
 Grade : >95% (NMR)
 Formula : $C_{44}H_{38}Cl_4N_8$
 M.W. : 820.64 g/mole



LT-D0046

meso-Tetra(*N*-methyl-3-pyridyl)porphine tetrachloride

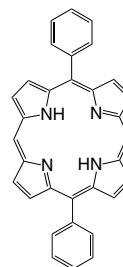
CAS No. : 129051-18-9
 Grade : >95% (NMR)
 Formula : $C_{44}H_{38}Cl_4N_8$
 M.W. : 820.64 g/mole



LT-D0047 H₂DPP

5,15-Diphenylporphine

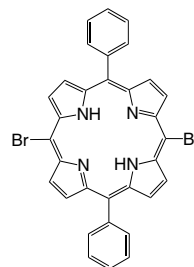
CAS No. : 22112-89-6
 Grade : >98% (HPLC)
 Formula : $C_{32}H_{22}N_4$
 M.W. : 462.56 g/mole



LT-D0048 H₂DPPBr₂

5,15-Dibromo-10,20-diphenylporphine

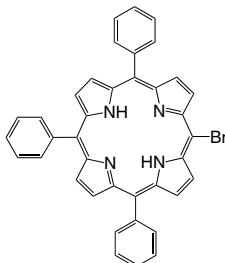
CAS No. : 151256-86-9
 Grade : >98% (HPLC)
 Formula : $C_{32}H_{20}Br_2N_4$
 M.W. : 620.34 g/mole



LT-D0049

5-Bromo-10,15,20-triphenylporphine

CAS No. : 67066-09-5
 Grade : >95%
 Formula : $C_{38}H_{25}BrN_4$
 M.W. : 617.54 g/mole

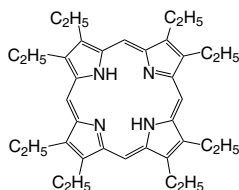


LT-D0050

H₂OEP

Octaethylporphine

CAS No. : 2683-82-1
 Grade : >97% (HPLC)
 Formula : $C_{36}H_{46}N_4$
 M.W. : 534.78 g/mole

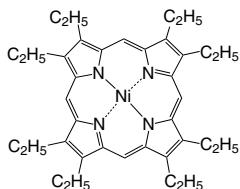


LT-D0051

NiOEP

Nickel(II) octaethylporphine

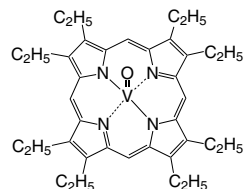
CAS No. : 24803-99-4
 Grade : >98% (NMR)
 Formula : $C_{36}H_{44}N_4Ni$
 M.W. : 591.45 g/mole



LT-D0052

Vanadyl octaethylporphine

CAS No. : 27860-55-5
 Grade : >95% (NMR)
 Formula : $C_{36}H_{44}N_4OV$
 M.W. : 599.7 g/mole
 UV : 407 nm (in THF)

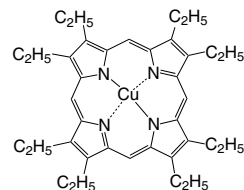


LT-D0053

CuOEP

Copper(II) octaethylporphine

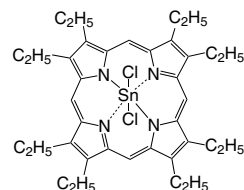
CAS No. : 14409-63-3
 Grade : >98% (HPLC)
 Formula : $C_{36}H_{44}CuN_4$
 M.W. : 596.31 g/mole



LT-D0054

Tin(IV) octaethylporphine dichloride

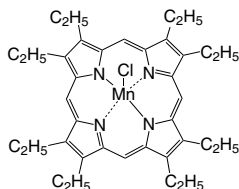
CAS No. : 25777-43-9
 Grade : >98%
 Formula : $C_{36}H_{44}Cl_2N_4Sn$
 M.W. : 722.38 g/mole



LT-D0055

Manganese(III) octaethylporphine chloride

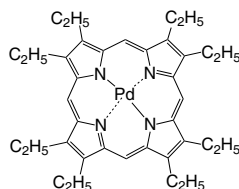
CAS No. : 28265-17-0
 Grade : >98%
 Formula : $C_{36}H_{44}ClMnN_4$
 M.W. : 623.15 g/mole



LT-D0056

Palladium(II) octaethylporphine

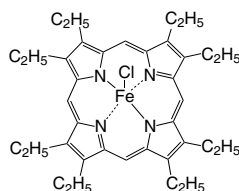
CAS No. : 24804-00-0
 Grade : >98% (HPLC)
 Formula : $C_{36}H_{44}N_4Pd$
 M.W. : 639.18 g/mole
 UV : 393 nm (in THF)



LT-D0057

Iron(III) octaethylporphine chloride

CAS No. : 28755-93-3
 Grade : >98%
 Formula : $C_{36}H_{44}ClFeN_4$
 M.W. : 624.06 g/mole

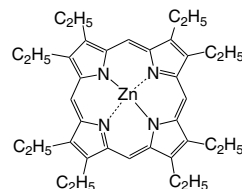


LT-D0058

ZnOEP

Zinc(II) octaethylporphine

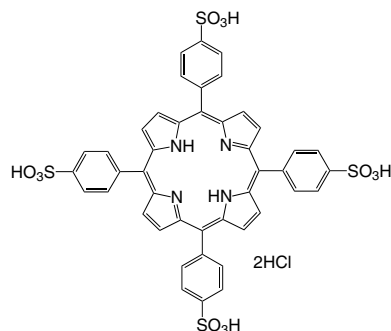
CAS No. : 17632-18-7
 Grade : >98%
 Formula : $C_{36}H_{44}N_4Zn$
 M.W. : 598.17 g/mole
 UV : 400 nm (in THF)



LT-D0062

meso-Tetra(4-sulfonatophenyl)porphine dihydrochloride

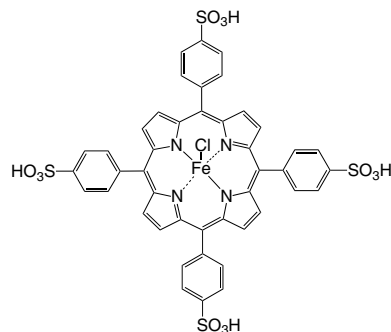
Grade : >95%
 Formula : $C_{44}H_{32}Cl_2N_4O_{12}S_4$
 M.W. : 1007.99 g/mole



LT-D0063

Iron(III) *meso*-tetra(4-sulfonatophenyl)porphine chloride (acid form)

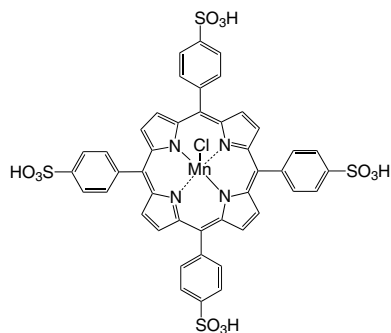
CAS No. : 90384-82-0
 Grade : >95%
 Formula : $C_{44}H_{28}ClFeN_4O_{12}S_4$
 M.W. : 1024.27 g/mole



LT-D0064

Manganese(III)*meso*-tetra(4-sulfonatophenyl)porphine chloride (acid form)

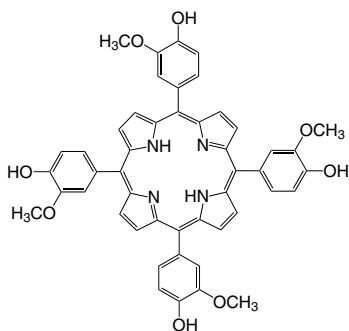
CAS No. : 221176-50-7
 Grade : >95%
 Formula : $C_{44}H_{28}ClMnN_4O_{12}S_4$
 M.W. : 1023.36 g/mole



LT-D0065

meso-Tetra(3-methoxy-4-hydroxyphenyl)porphine

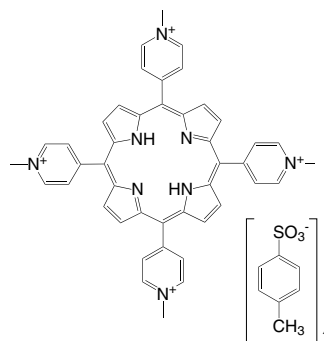
CAS No. : 22112-80-7
 Grade : >95% (NMR)
 Formula : $C_{48}H_{38}N_4O_8$
 M.W. : 798.84 g/mole



LT-D0066

meso-Tetra(*N*-methyl-4-pyridyl)porphine tetratosylate

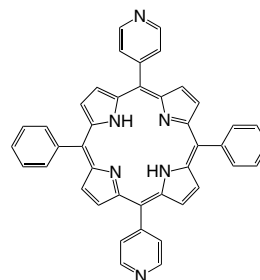
CAS No. : 36951-72-1
 Grade : >95%
 Formula : $C_{72}H_{66}N_8O_{12}S_4$
 M.W. : 1363.6 g/mole
 UV : 421 nm



LT-D0068

5,15-Diphenyl-10,20-di(4-pyridyl)-21*H*,23*H*-porphine

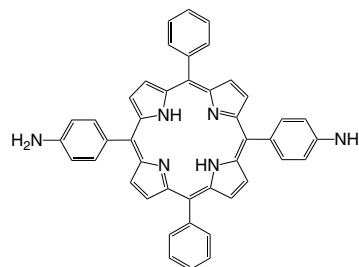
CAS No. : 71410-72-5
 Grade : >98% (NMR)
 Formula : $C_{42}H_{28}N_6$
 M.W. : 616.71 g/mole



LT-D0069 trans-DATPP

5,15-Di(4-aminophenyl)-10,20-diphenyl porphine

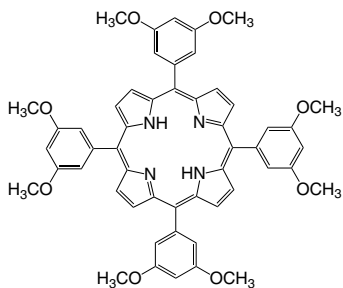
CAS No. : 116206-75-8
 Grade : >98% (NMR)
 Formula : $C_{44}H_{32}N_6$
 M.W. : 644.77 g/mole



LT-D0074

5,10,15,20-Tetrakis(3,5-dimethoxyphenyl)porphyrin

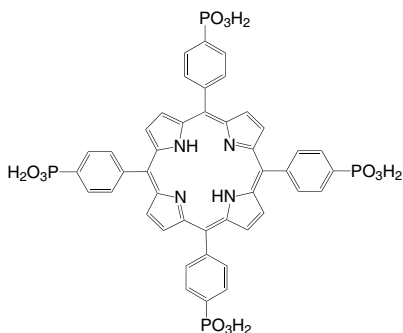
CAS No. : 74684-34-7
 Grade : >95% (NMR)
 Formula : $C_{52}H_{46}N_4O_8$
 M.W. : 854.96 g/mole



LT-D0075

5,10,15,20-Tetrakis(4-phosphonatophenyl)porphyrin

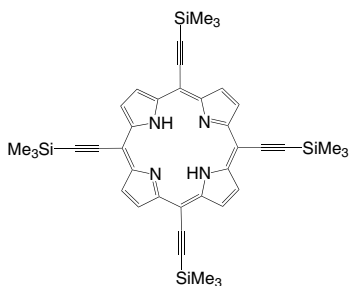
CAS No. : 143969-69-1
 Grade : >95%
 Formula : $C_{44}H_{34}N_4O_{12}P_4$
 M.W. : 934.66 g/mole



LT-D0076

5,10,15,20-Tetra(trimethylsilylethynyl)porphyrin

CAS No. : 140702-08-5
 Grade : >95% (NMR)
 Formula : $C_{40}H_{46}N_4Si_4$
 M.W. : 695.16 g/mole

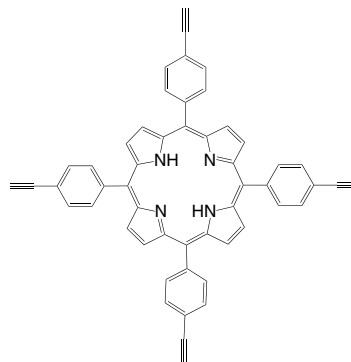


LT-D0077

TEPP

5,10,15,20-Tetra(4-ethynylphenyl)porphyrin

CAS No. : 160240-15-3
 Grade : >98% (NMR)
 Formula : $C_{52}H_{30}N_4$
 M.W. : 710.82 g/mole

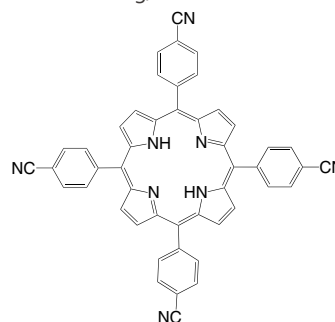


LT-D0078

H2TCNPP

5,10,15,20-Tetra(4-cyanophenyl)porphyrin

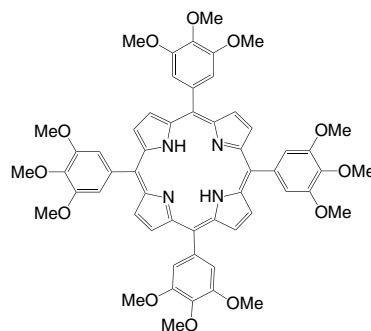
CAS No. : 14609-51-9
 Grade : >98% (NMR)
 Formula : $C_{48}H_{26}N_8$
 M.W. : 714.77 g/mole



LT-D0079

5,10,15,20-Tetra(3,4,5-trimethoxyphenyl)porphyrin

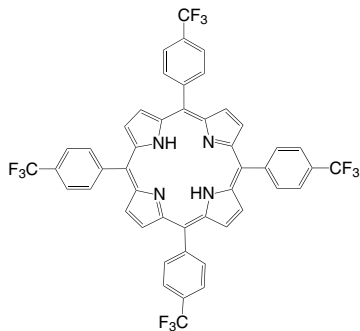
CAS No. : 74684-35-8
 Grade : >98% (NMR)
 Formula : $C_{56}H_{54}N_4O_{12}$
 M.W. : 975.05 g/mole



LT-D0080

5,10,15,20-Tetra(4-trifluoromethylphenyl)porphyrin

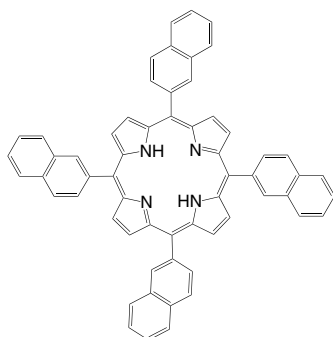
CAS No. : 56420-24-7
 Grade : >98% (NMR)
 Formula : $C_{48}H_{26}F_{12}N_4$
 M.W. : 886.73 g/mole



LT-D0081

5,10,15,20-Tetra(2-naphthalenyl)porphyrin

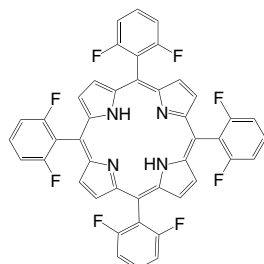
CAS No. : 132055-60-8
 Grade : >98% (NMR)
 Formula : $C_{60}H_{38}N_4$
 M.W. : 814.97 g/mole



LT-D0082

5,10,15,20-Tetra(2,6-difluorophenyl)porphyrin

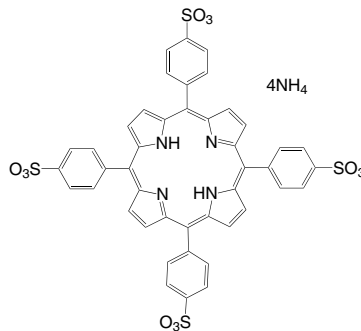
CAS No. : 104322-39-6
 Grade : >98% (NMR)
 Formula : $C_{44}H_{22}F_8N_4$
 M.W. : 758.66 g/mole



LT-D0083

5,10,15,20-Tetra(4-sulfonatophenyl)porphyrin tetraammonium

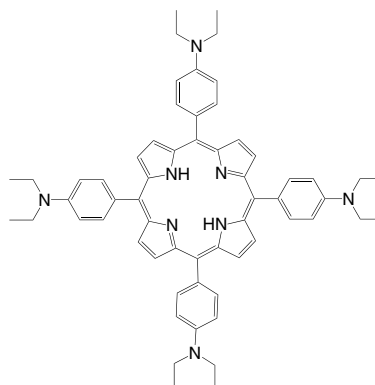
CAS No. : 39174-47-5
 Grade : >95%
 Formula : $C_{44}H_{42}N_8O_{12}S_4$
 M.W. : 1003.11 g/mole



LT-D0084

5,10,15,20-Tetra(*N,N*-diethyl-4-aminophenyl)porphyrin

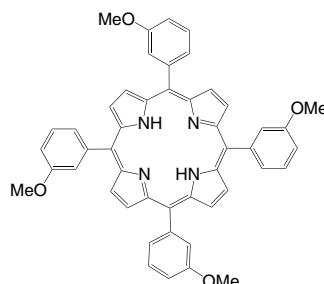
CAS No. : 14609-52-0
 Grade : >95% (NMR)
 Formula : $C_{60}H_{66}N_8$
 M.W. : 899.22 g/mole



LT-D0085

5,10,15,20-Tetra(3-methoxyphenyl)porphyrin

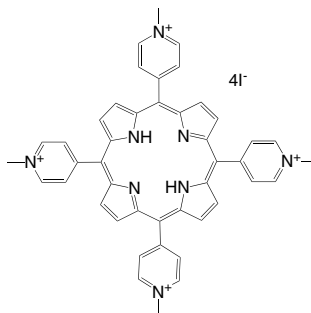
CAS No. : 29114-93-0
 Grade : >98% (NMR)
 Formula : $C_{48}H_{38}N_4O_4$
 M.W. : 734.84 g/mole



LT-D0086

5,10,15,20-Tetra(*N*-methyl-4-pyridyl)porphyrin tetraiodide

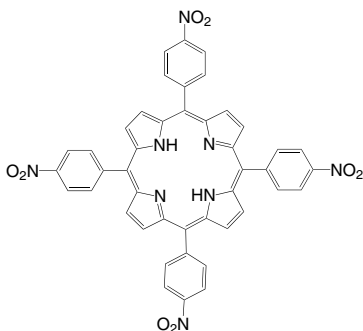
CAS No. : 36674-90-5
 Grade : >98% (NMR)
 Formula : $C_{44}H_{38}I_4N_8$
 M.W. : 1186.44 g/mole



LT-D0087

5,10,15,20-Tetra(4-nitrophenyl)porphyrin

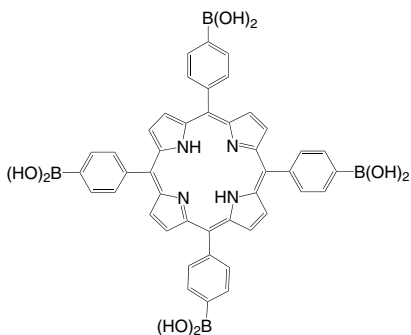
CAS No. : 22843-73-8
 Grade : >95% (NMR)
 Formula : $C_{44}H_{26}N_8O_8$
 M.W. : 794.73 g/mole



LT-D0088

5,10,15,20-Tetra(4-dihydroxyborylphenyl)porphyrin

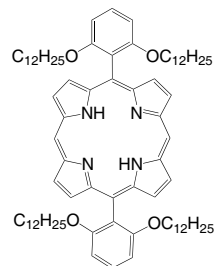
CAS No. : 97654-08-5
 Grade : >95%
 Formula : $C_{44}H_{34}B_4N_4O_8$
 M.W. : 790.01 g/mole



LT-D0089

5,15-Di(2,6-dodecyloxyphenyl)porphyrin

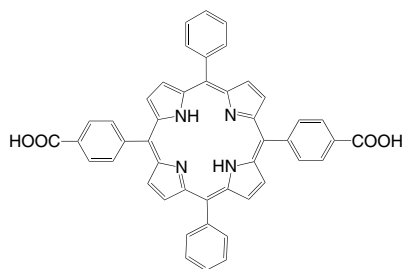
CAS No. : 2098053-76-8
 Grade : >98% (NMR)
 Formula : $C_{80}H_{118}N_4O_4$
 M.W. : 1199.82 g/mole



LT-D0090

5,15-Di(4-carboxyphenyl)-10,20-diphenylporphyrin

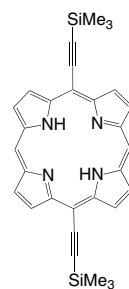
CAS No. : 142168-26-1
 Grade : >98% (NMR)
 Formula : $C_{46}H_{30}N_4O_4$
 M.W. : 702.75 g/mole



LT-D0091

5,15-Di(trimethylsilyl ethynyl)porphyrin

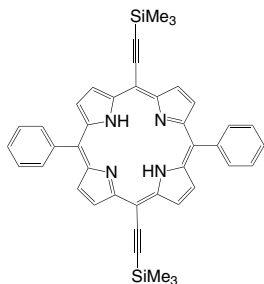
CAS No. : 220676-02-8
 Grade : >98% (NMR)
 Formula : $C_{30}H_{30}N_4Si_2$
 M.W. : 502.76 g/mole



LT-D0092

5,15-Di(trimethylsilylethynyl)-10,20-diphenylporphyrin

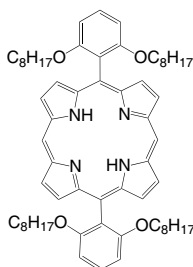
CAS No. : 186382-65-0
 Grade : >98% (NMR)
 Formula : $C_{42}H_{38}N_4Si_2$
 M.W. : 654.95 g/mole



LT-D0093

5,15-Di(2,6-octyloxyphenyl)porphyrin

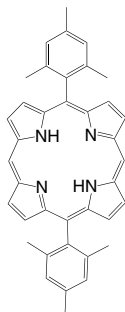
CAS No. : 1350927-85-3
 Grade : >98% (NMR)
 Formula : $C_{64}H_{86}N_4O_4$
 M.W. : 975.39 g/mole



LT-D0094

5,15-Dimesitylporphyrin

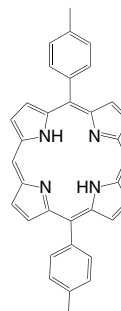
CAS No. : 382138-82-1
 Grade : >98% (NMR)
 Formula : $C_{38}H_{34}N_4$
 M.W. : 546.7 g/mole



LT-D0095

5,15-Di(p-tolyl)porphyrin

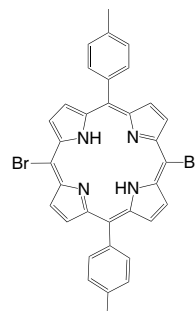
CAS No. : 128374-05-0
 Grade : >98% (NMR)
 Formula : $C_{34}H_{26}N_4$
 M.W. : 490.6 g/mole



LT-D0096

5,15-Di(p-tolyl)-10,20-dibromoporphyrin

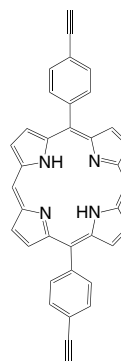
CAS No. : 460088-30-6
 Grade : >98% (NMR)
 Formula : $C_{34}H_{24}Br_2N_4$
 M.W. : 648.39 g/mole



LT-D0097

5,15-Di(4-ethynylphenyl)porphyrin

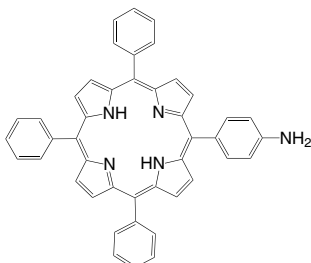
CAS No. : 632301-81-6
 Grade : >98% (NMR)
 Formula : $C_{36}H_{22}N_4$
 M.W. : 510.59 g/mole



LT-D0098

5-(4-Aminophenyl)-10,15,20-triphenylporphyrin

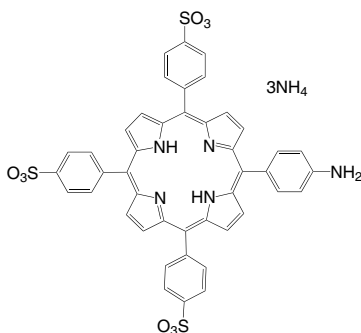
CAS No. : 67605-64-5
 Grade : >98% (NMR)
 Formula : $C_{44}H_{31}N_5$
 M.W. : 629.75 g/mole



LT-D0099

5-(4-Aminophenyl)-10,15,20-tri(4-sulfonatophenyl)porphyrin triammonium

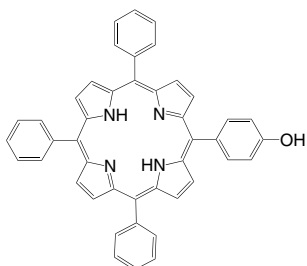
CAS No. : 1007126-46-6
 Grade : >95% (NMR)
 Formula : $C_{44}H_{40}N_8O_9S_3$
 M.W. : 921.03 g/mole



LT-D0100

5-(4-Hydroxyphenyl)-10,15,20-triphenylporphyrin

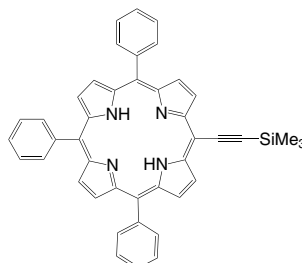
CAS No. : 87345-22-0
 Grade : >98% (NMR)
 Formula : $C_{44}H_{30}N_4O$
 M.W. : 630.74 g/mole



LT-D0101

5-(Trimethylsilylethynyl)-10,15,20-triphenylporphyrin

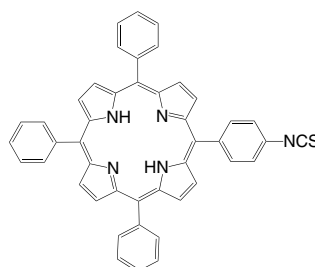
CAS No. : 1205553-90-7
 Grade : >98% (NMR)
 Formula : $C_{43}H_{34}N_4Si$
 M.W. : 634.84 g/mole



LT-D0102

5-(4-Isothiocyanatophenyl)-10,15,20-triphenylporphyrin

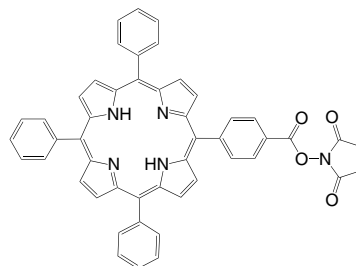
CAS No. : 863708-54-7
 Grade : >98% (NMR)
 Formula : $C_{45}H_{29}N_5S$
 M.W. : 671.81 g/mole



LT-D0103

5-(4-Carboxyphenyl succinimide ester)-10,15,20-triphenylporphyrin

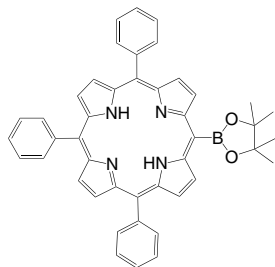
CAS No. : 145363-23-1
 Grade : >98% (NMR)
 Formula : $C_{49}H_{33}N_5O_4$
 M.W. : 755.8 g/mole2



LT-D0104

5,10,15-Triphenyl-20-(4,4,5,5-tetramethyl-1,3,2-dioxaborolan-2-yl)porphyrin

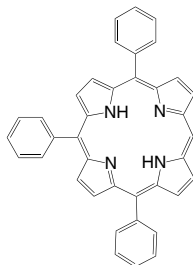
CAS No. : 1268697-66-0
 Grade : >95% (NMR)
 Formula : $C_{44}H_{37}BN_4O_2$
 M.W. : 664.6 g/mole



LT-D0105

5,10,15-Triphenylporphyrin

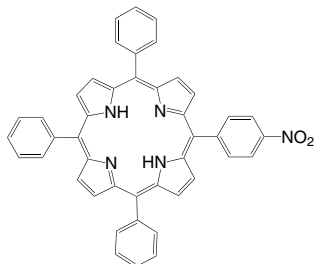
CAS No. : 67066-08-4
 Grade : >98% (NMR)
 Formula : $C_{38}H_{26}N_4$
 M.W. : 538.64 g/mole



LT-D0106

5-(4-Nitrophenyl)-10,15,20-triphenylporphyrin

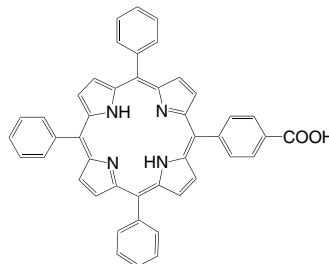
CAS No. : 67605-65-6
 Grade : >98% (NMR)
 Formula : $C_{44}H_{29}N_5O_2$
 M.W. : 659.73 g/mole



LT-D0107

5-(4-Carboxyphenyl)-10,15,20-triphenylporphyrin

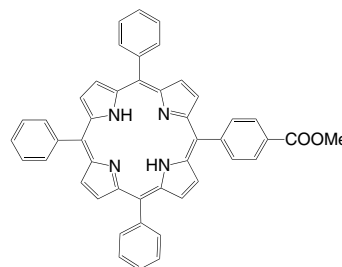
CAS No. : 95051-10-8
 Grade : >98% (NMR)
 Formula : $C_{45}H_{30}N_4O_2$
 M.W. : 658.75 g/mole



LT-D0108

5-(4-Methoxycarbonylphenyl)-10,15,20-triphenylporphyrin

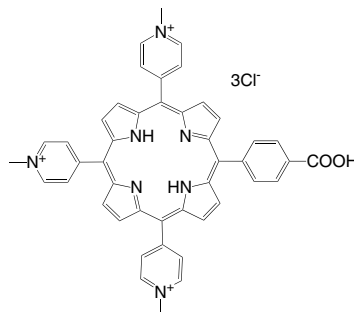
CAS No. : 119730-06-2
 Grade : >98% (NMR)
 Formula : $C_{46}H_{32}N_4O_2$
 M.W. : 672.77 g/mole



LT-D0109

5-(4-Carboxyphenyl)-10,15,20-tri(N-methyl-4-pyridyl)porphyrin trichloride

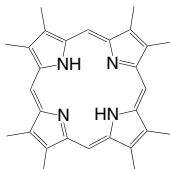
CAS No. : 211360-21-3
 Grade : >95%
 Formula : $C_{45}H_{36}Cl_3N_7O_2$
 M.W. : 813.17 g/mole



LT-D0110

2,3,7,8,12,13,17,18-Octamethylporphyrin

CAS No. : 1257-25-6
 Grade : >95% (NMR)
 Formula : $C_{28}H_{30}N_4$
 M.W. : 422.56 g/mole

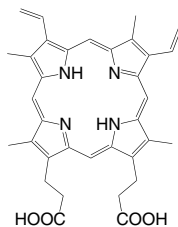


LT-D0111

protoporphyrin IX

7,12-Diethenyl-3,8,13,17-tetramethyl-21H,23H-porphine-2,18-dipropanoic acid

CAS No. : 553-12-8
 Grade : >97% (NMR)
 Formula : $C_{34}H_{34}N_4O_4$
 M.W. : 562.66 g/mole

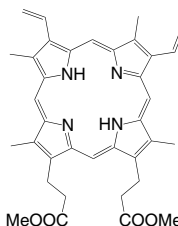


LT-D0112

protoporphyrin IX dimethyl ester

7,12-Diethenyl-3,8,13,17-tetramethyl-21H,23H-Porphine-2,18-dipropanoic acid-2,18-dimethyl ester

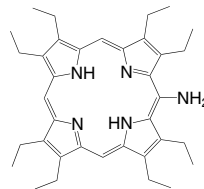
CAS No. : 5522-66-7
 Grade : >98% (NMR)
 Formula : $C_{36}H_{38}N_4O_4$
 M.W. : 590.71 g/mole



LT-D0113

5-Amino-2,3,7,8,12,13,17,18-octaethylporphyrin

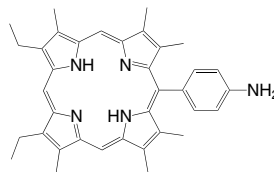
CAS No. : 3134-01-8
 Grade : >95% (NMR)
 Formula : $C_{36}H_{47}N_5$
 M.W. : 549.79 g/mole



LT-D0114

5-(4-Aminophenyl)-2,3,7,8,12,18-hexamethyl-13,17-diethyl porphyrin

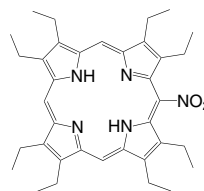
CAS No. : 1248395-23-4
 Grade : >95% (NMR)
 Formula : $C_{36}H_{39}N_5$
 M.W. : 541.73 g/mole



LT-D0115

5-Nitro-2,3,7,8,12,13,17,18-octaethylporphyrin

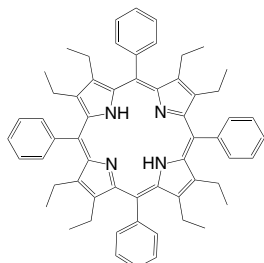
CAS No. : 3133-98-0
 Grade : >95% (NMR)
 Formula : $C_{36}H_{45}N_5O_2$
 M.W. : 579.77 g/mole



LT-D0116

2,3,7,8,12,13,17,18-Octaethyl-5,10,15,20-tetraphenylporphyrin

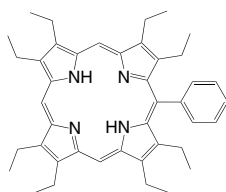
CAS No. : 63511-61-5
 Grade : >95% (NMR)
 Formula : $C_{60}H_{62}N_4$
 M.W. : 839.16 g/mole



LT-D0117

5-Phenyl-2,3,7,8,12,13,17,18-octaethylporphyrin

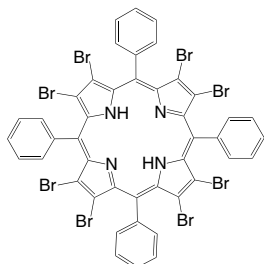
CAS No. : 60188-33-2
 Grade : >98% (NMR)
 Formula : $C_{42}H_{50}N_4$
 M.W. : 610.87 g/mole



LT-D0118

2,3,7,8,12,13,17,18-Octabromo-5,10,15,20-tetraphenylporphyrin

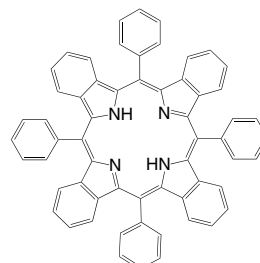
CAS No. : 131214-86-3
 Grade : >98% (NMR)
 Formula : $C_{44}H_{22}Br_8N_4$
 M.W. : 1245.9 g/mole



LT-D0119 H₂TPBP

5,10,15,20-Tetraphenyltetrabenzoporphyrin

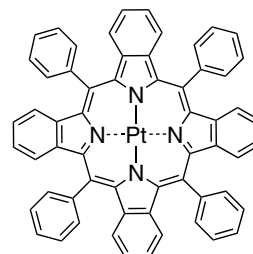
CAS No. : 80528-89-8
 Grade : >95% (NMR)
 Formula : $C_{60}H_{38}N_4$
 M.W. : 814.97 g/mole



LT-N734 Pt(TPBP)

Platinum(II) 5,10,15,20-tetraphenyltetrabenzoporphyrin

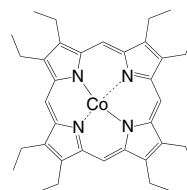
CAS No. : 166174-05-6
 Grade : >96% (HPLC)
 Formula : $C_{60}H_{36}N_4Pt$
 M.W. : 1008.03 g/mole
 UV : 430, 610 nm (in THF)
 PL : 765 nm (in THF)
 TGA : >320 °C (0.5% weight loss)



LT-D0120 CoOEP

Cobalt(II) 2,3,7,8,12,13,17,18-octaethylporphyrin

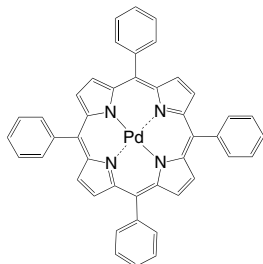
CAS No. : 17632-19-8
 Grade : >98% (NMR)
 Formula : $C_{36}H_{44}CoN_4$
 M.W. : 591.69 g/mole



LT-D0121 | PdTPP

Palladium(II) 5,10,15,20-tetraphenylporphyrin

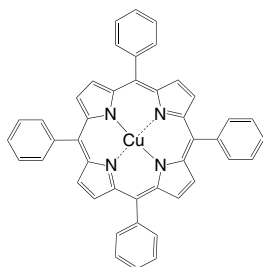
CAS No. : 14187-13-4
 Grade : >98% (NMR)
 Formula : $C_{44}H_{28}N_4Pd$
 M.W. : 719.14 g/mole



LT-D0122 | CuTPP

Copper(II) 5,10,15,20-tetraphenylporphyrin

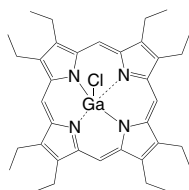
CAS No. : 14172-91-9
 Grade : >98% (NMR)
 Formula : $C_{44}H_{28}CuN_4$
 M.W. : 676.27 g/mole



LT-D0123 |

Gallium(III) 2,3,7,8,12,13,17,18-octaethylporphyrin chloride

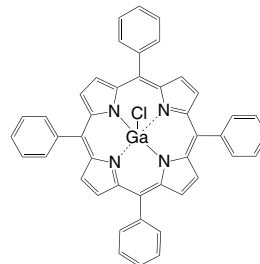
CAS No. : 87607-70-3
 Grade : >98% (NMR)
 Formula : $C_{36}H_{44}ClGaN_4$
 M.W. : 637.94 g/mole



LT-D0124 |

Gallium(III) 5,10,15,20-tetraphenylporphyrin chloride

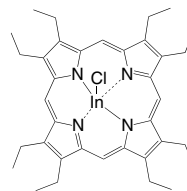
CAS No. : 78833-52-0
 Grade : >98% (NMR)
 Formula : $C_{44}H_{28}ClGaN_4$
 M.W. : 717.9 g/mole



LT-D0125 |

Indium(III) 2,3,7,8,12,13,17,18-octaethylporphyrin chloride

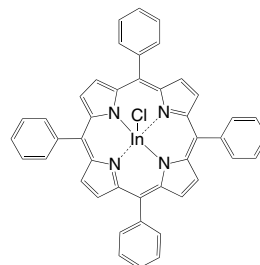
CAS No. : 32125-07-8
 Grade : >98% (NMR)
 Formula : $C_{36}H_{44}ClInN_4$
 M.W. : 683.03 g/mole



LT-D0126 |

Indium(III) 5,10,15,20-tetraphenylporphyrin chloride

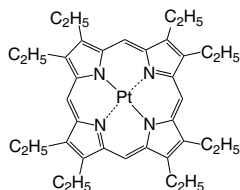
CAS No. : 63128-70-1
 Grade : >98% (NMR)
 Formula : $C_{44}H_{28}ClInN_4$
 M.W. : 762.99 g/mole



LT-N752 | PtOEP

Platinum(II) octaethylporphine

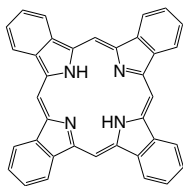
CAS No. : 31248-39-2
 Grade : >95% (HPLC)
 Formula : $C_{36}H_{44}N_4Pt$
 M.W. : 727.84 g/mole
 UV : 389, 534 nm (in CH_2Cl_2)
 PL : 646 ± 1 nm (in CH_2Cl_2)
 TGA : >290 °C (5% weight loss)



LT-S9044 | BP

Tetrabenzoporphine

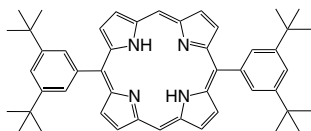
CAS No. : 52952-31-5
 Grade : Sublimed product
 Formula : $C_{36}H_{22}N_4$
 M.W. : 510.59 g/mole
 TGA : >200 °C (0.5% weight loss)



K0485 |

5,15-Bis[3,5-di(*tert*-butyl)phenyl]porphyrin

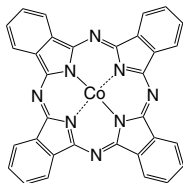
CAS No. : 173613-63-3
 Grade : >97% (HPLC)
 Formula : $C_{48}H_{54}N_4$
 M.W. : 686.97 g/mole



LT-D2001 | CoPC

Cobalt(II) phthalocyanine

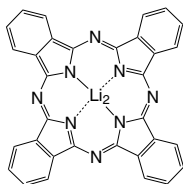
CAS No. : 3317-67-7
 Grade : Sublimed product
 Formula : $C_{32}H_{16}CoN_8$
 M.W. : 571.47 g/mole



LT-D2002 | Li₂PC

Dilithium phthalocyanine

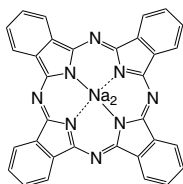
CAS No. : 25510-41-2
 Grade : Sublimed product
 Formula : $C_{32}H_{16}Li_2N_8$
 M.W. : 526.42 g/mole
 UV : 658 nm (in DMF)



LT-D2003 | Na₂PC

Disodium phthalocyanine

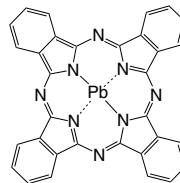
CAS No. : 25476-27-1
 Grade : Sublimed product
 Formula : $C_{32}H_{16}Na_2N_8$
 M.W. : 558.52 g/mole
 UV : 656, 692 nm (in $CHCl_3$)



LT-D2004 | PbPC

Lead(II) phthalocyanine

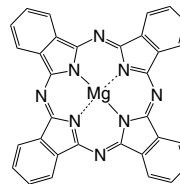
CAS No. : 15187-16-3
 Grade : Sublimed >99%
 Formula : $C_{32}H_{16}PbN_8$
 M.W. : 719.74 g/mole
 UV : 698 nm (in DMF)



LT-D2006 | MgPC

Magnesium(II) phthalocyanine

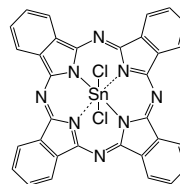
CAS No. : 1661-03-6
 Grade : Sublimed product
 Formula : $C_{32}H_{16}MgN_8$
 M.W. : 536.84 g/mole
 UV : 668 nm (in DMF)



LT-D2008 | SnCl₂PC

Tin(IV) phthalocyanine dichloride

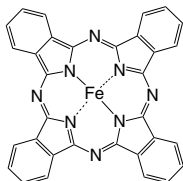
CAS No. : 18253-54-8
 Grade : Sublimed product
 Formula : $C_{32}H_{16}Cl_2N_8Sn$
 M.W. : 702.15 g/mole



LT-D2009 | FePC

Iron(II) phthalocyanine

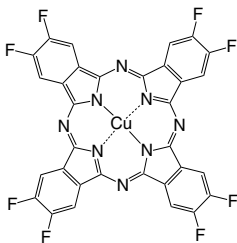
CAS No. : 132-16-1
 Grade : Sublimed product
 Formula : $C_{32}H_{16}FeN_8$
 M.W. : 568.38 g/mole
 UV : 675 nm (in DMF)



LT-D2010 | 2,3-F₈CuPC

Copper(II) 2,3,9,10,16,17,23,24-octafluorophthalocyanine

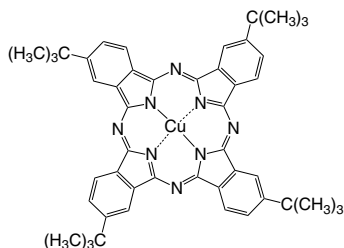
CAS No. : 148651-60-9
 Grade : Sublimed product
 Formula : $C_{32}H_8CuF_8N_8$
 M.W. : 720.01 g/mole



LT-D2011

Copper(II) 2,9,16,23-tetra-tert-butylphthalocyanine

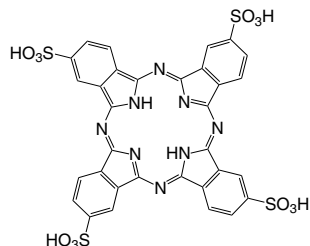
CAS No. : 39001-64-4
 Grade : Sublimed product
 Formula : $C_{48}H_{48}CuN_8$
 M.W. : 800.51 g/mole
 UV : 672 nm (in DMF)



LT-D2012

Phthalocyanine tetrasulfonic acid

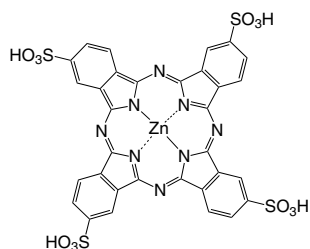
CAS No. : 33308-41-7
 Grade : >96% (with isomers)
 Formula : $C_{32}H_{18}N_8O_{12}S_4$
 M.W. : 834.79 g/mole



LT-D2013

Zinc(II) phthalocyanine tetrasulfonic acid

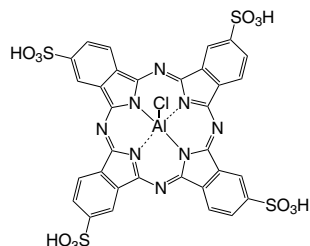
CAS No. : 61586-86-5
 Grade : >96% (with isomers)
 Formula : $C_{32}H_{18}N_8O_{12}S_4Zn$
 M.W. : 898.19 g/mole



LT-D2014

Aluminum(III) phthalocyanine chloride tetrasulfonic acid

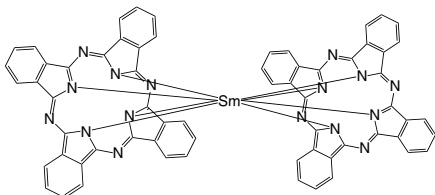
CAS No. : 100180-30-1
 Grade : >96% (with isomers)
 Formula : $C_{32}H_{16}AlClN_8O_{12}S_4$
 M.W. : 895.21 g/mole



LT-D2015 | SmPC₂

Bis(2(3),9(10),16(17),23(24)-tetrakis-(3,4-phenyl)-phthalocyaninato)samarium(III)

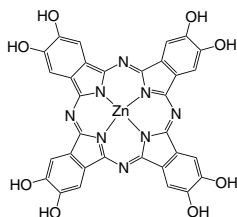
CAS No. : 82800-48-4
 Grade : >99%
 Formula : C₆₄H₃₂N₁₆Sm
 M.W. : 1175.41 g/mole



LT-D2016 | [OH]₈ZnPC

2,3,9,10,16,17,23,24-Octahydroxy-phthalocyaninato zinc(II)

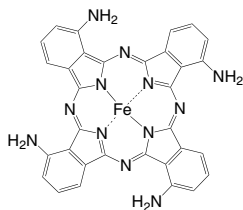
CAS No. : 121322-70-1
 Grade : >95%
 Formula : C₃₂H₁₆N₈O₈Zn
 M.W. : 705.93 g/mole



LT-D2017

Iron(II) 1,8,15,22-tetraamino-phthalocyanine

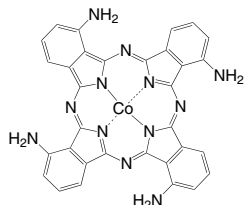
Grade : >95%
 Formula : C₃₂H₂₀FeN₁₂
 M.W. : 628.43 g/mole



LT-D2018

Cobalt(II) 1,8,15,22-tetraamino-phthalocyanine

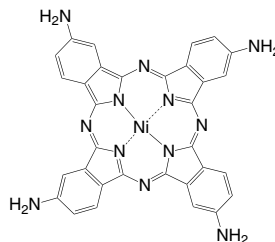
CAS No. : 77135-78-5
 Grade : >95%
 Formula : C₃₂H₂₀CoN₁₂
 M.W. : 631.51 g/mole



LT-D2019

Nickel(II) 2,9,16,23-tetraamino-phthalocyanine

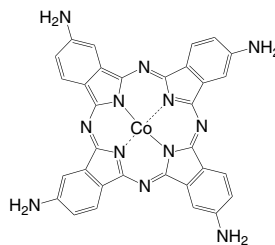
CAS No. : 27680-33-7
 Grade : >95%
 Formula : C₃₂H₂₀N₁₂Ni
 M.W. : 631.27 g/mole



LT-D2020

Cobalt(II) 2,9,16,23-tetraamino-phthalocyanine

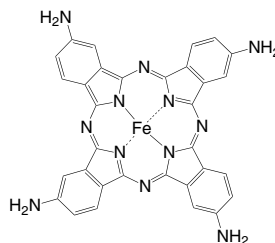
CAS No. : 203860-42-8
 Grade : >95%
 Formula : C₃₂H₂₀CoN₁₂
 M.W. : 631.51 g/mole



LT-D2021

Iron(II) 2,9,16,23-tetraamino-phthalocyanine

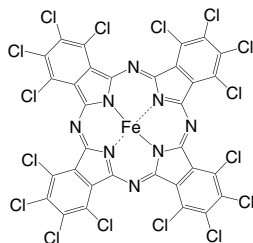
CAS No. : 95100-27-9
 Grade : >95%
 Formula : C₃₂H₂₀FeN₁₂
 M.W. : 628.43 g/mole



LT-D2022

Iron(II) 1,2,3,4,8,9,10,11,15,16,17,18,22,23,24,25-hexadecachloro-phthalocyanine

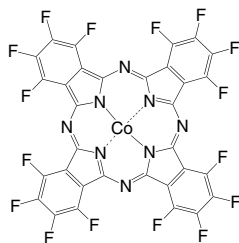
CAS No. : 50662-67-4
 Grade : >95%
 Formula : $C_{32}Cl_{16}FeN_8$
 M.W. : 1119.49 g/mole



LT-D2023 F16CoPc

Cobalt(II) 1,2,3,4,8,9,10,11,15,16,17,18,22,23,24,25-hexadecafluoro-phthalocyanine

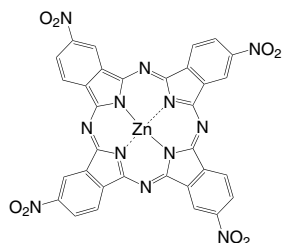
CAS No. : 52629-20-6
 Grade : >95%
 Formula : $C_{32}CoF_{16}N_8$
 M.W. : 859.3 g/mole



LT-D2024

Zinc(II) 2,9,16,23-tetranitro-phthalocyanine

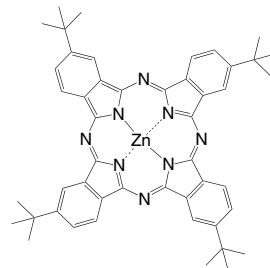
CAS No. : 100043-01-4
 Grade : >95%
 Formula : $C_{32}H_{12}N_{12}O_8Zn$
 M.W. : 757.89 g/mole



LT-D2025

Zinc(II) 2,9,16,23-tetra(t-butyl)phthalocyanine

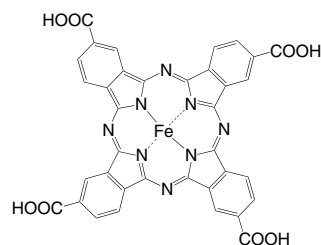
CAS No. : 39001-65-5
 Grade : >95%
 Formula : $C_{48}H_{48}N_8Zn$
 M.W. : 802.33 g/mole



LT-D2026

Iron(II) 2,9,16,23-tetracarboxy-phthalocyanine

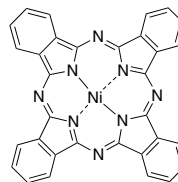
Grade : >95%
 Formula : $C_{36}H_{16}FeN_8O_8$
 M.W. : 744.41 g/mole



LT-D2027 NiPC

Nickel(II) phthalocyanine

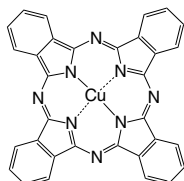
CAS No. : 14055-02-8
 Grade : Sublimed >99%
 Formula : $C_{32}H_{16}N_8Ni$
 M.W. : 571.22 g/mole



LT-E201 | CuPC

Copper(II) phthalocyanine

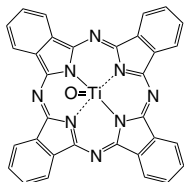
CAS No.	: 147-14-8
Grade	: Sublimed >99%
Formula	: $C_{32}H_{16}CuN_8$
M.W.	: 576.08 g/mole
UV	: 345, 631 nm (in CH_2Cl_2)
PL	: 404 nm (film)
TGA	: >430°C (0.5% weight loss)



LT-E206 | TiOPC

Titanium oxide phthalocyanine

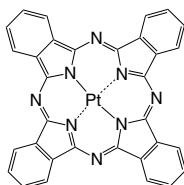
CAS No.	: 26201-32-1
Grade	: Sublimed >99%
Formula	: $C_{32}H_{16}N_8OTi$
M.W.	: 576.39 g/mole
UV	: 349,692 nm (in CH_2Cl_2)
PL	: 392 (in film)
TGA	: > 440°C (0.5% weight loss)



LT-N219 | PtPC

Phthalocyanine platinum

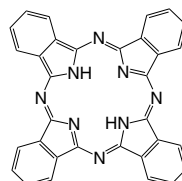
CAS No.	: 14075-08-2
Grade	: Sublimed >99% (TGA)
Formula	: $C_{32}H_{16}N_8Pt$
M.W.	: 707.6 g/mole
UV	: 228, 270 nm (in CH_2Cl_2)
PL	: 372.5 nm (in CH_2Cl_2)
TGA	: >460°C (0.5% weight loss)



LT-N222 | H₂PC

Phthalocyanine

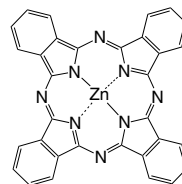
CAS No.	: 574-93-6
Grade	: Sublimed >98%
Formula	: $C_{32}H_{18}N_8$
M.W.	: 514.54 g/mole
UV	: 279,693 nm (in C_6H_6)
PL	: 418 nm (in C_6H_6)
TGA	: >350°C (0.5% weight loss)



LT-S906 | ZnPC

Zinc phthalocyanine

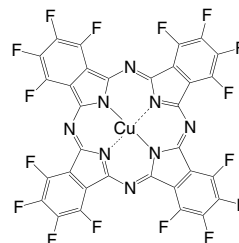
CAS No.	: 14320-04-8
Grade	: Sublimed >99%
Formula	: $C_{32}H_{16}N_8Zn$
M.W.	: 577.92 g/mole
PL	: 534 nm (in CH_2Cl_2)



LT-S928 | F₁₆CuPC

Copper(II) 1,2,3,4,8,9,10,11,15,16,17,18,22,23,24,25-hexadecafluoro-29H,31H-phthalocyanine

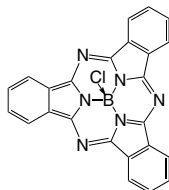
CAS No.	: 14916-87-1
Grade	: Sublimed product
Formula	: $C_{32}CuF_{16}N_8$
M.W.	: 863.93 g/mole
UV	: 690 nm (in THF)
TGA	: >400 °C (0.5% weight loss)



LT-S943 | SubPC

Boron subphthalocyanine chloride

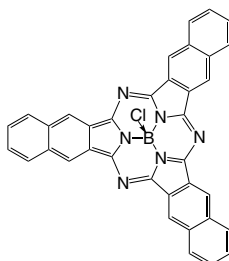
CAS No.	: 36530-06-0
Grade	: Sublimed >99%
Formula	: $C_{24}H_{12}BN_6Cl$
M.W.	: 430.66 g/mole
UV	: 565 nm (in DMF)
PL	: 577 nm (in DMF)
TGA	: >340 °C (0.5% weight loss)



LT-S947 | SubNC

Boron sub-2,3-naphthalocyanine chloride

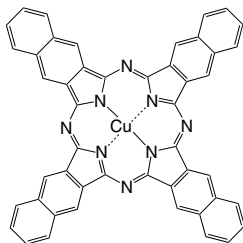
CAS No.	: 142710-56-3
Grade	: Sublimed >99%
Formula	: $C_{36}H_{18}BClN_6$
M.W.	: 580.83 g/mole
UV	: 658 nm (in CH_2Cl_2)
TGA	: >370 °C (0.5% weight loss)



LT-S962 | CuNC

Copper(II) 2,3-naphthalocyanine

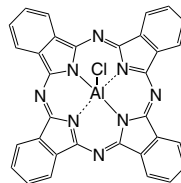
CAS No.	: 33273-09-5
Grade	: Sublimed >99% (TGA)
Formula	: $C_{48}H_{24}CuN_8$
M.W.	: 776.30 g/mole
UV	: 681 nm (in CH_2Cl_2)
TGA	: >430 °C (0.5% weight loss)



LT-S9025 | AIPCCI

Aluminum phthalocyanine chloride

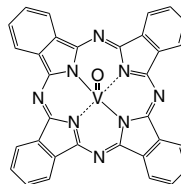
CAS No.	: 14154-42-8
Grade	: Sublimed >99%
Formula	: $C_{32}H_{16}AlClN_4$
M.W.	: 574.97 g/mole
UV	: 675 nm (in DMF)



LT-S9053 | VOPC

Oxyvanadium phthalocyanine

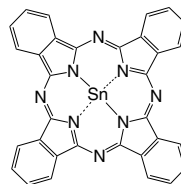
CAS No.	: 13930-88-6
Grade	: Sublimed product
Formula	: $C_{32}H_{16}N_8OV$
M.W.	: 579.47 g/mole
UV	: 338, 684 nm (in CH_2Cl_2)



LT-S9086 | SnPC

Tin(II) phthalocyanine

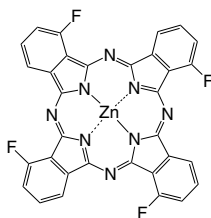
CAS No.	: 15304-57-1
Grade	: Sublimed product
Formula	: $C_{32}H_{16}N_8Sn$
M.W.	: 631.25 g/mole



LT-S9171 | F₄ZnPC

Zinc(II)-1,8,15,22-tetrafluoro-29H,31H-phthalocyanine, mixture of isomers

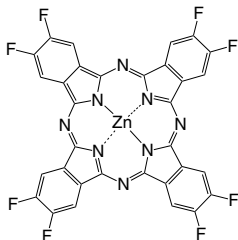
CAS No.	: 1120355-28-3
Grade	: Sublimed >99%
Formula	: C ₃₂ H ₁₂ F ₄ N ₈ Zn
M.W.	: 649.89 g/mole
UV	: 681 nm (in CHCl ₃)
TGA	: >250 °C (0.5% weight loss)



LT-S9172 | F₈ZnPC

Zinc(II)-2,3,9,10,16,17,23,24-octafluoro-29H,31H-phthalocyanine

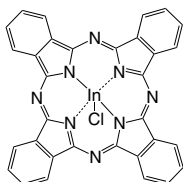
CAS No.	: 676519-80-5
Grade	: Sublimed >99%
Formula	: C ₃₂ H ₈ F ₈ N ₈ Zn
M.W.	: 721.86 g/mole
UV	: 338, 656 nm (in DMF)
TGA	: >300 °C (0.5% weight loss)



LT-S9176 | InCIPC

Indium(III) phthalocyanine chloride

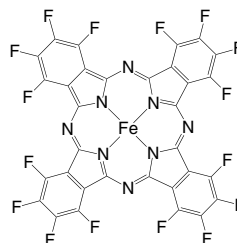
CAS No.	: 19631-19-7
Grade	: Sublimed >99%
Formula	: C ₃₂ H ₁₆ ClInN ₈
M.W.	: 662.79 g/mole
UV	: 358, 683 nm (in CHCl ₃)
TGA	: >300 °C (0.5% weight loss)



LT-S9177 | F₁₆FePC

Iron(II) 1,2,3,4,8,9,10,11,15,16,17,18,22,23,24,25-hexadecafluoro-29H,31H-phthalocyanine

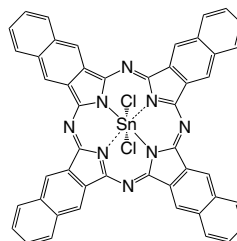
CAS No.	: 23844-93-1
Grade	: Sublimed >99%
Formula	: C ₃₂ F ₁₆ FeN ₈
M.W.	: 856.22 g/mole
UV	: 333, 627 nm (in Acetone)
TGA	: >300 °C (0.5% weight loss)



LT-S9180 | SnNCCl₂

Tin(IV) 2,3-naphthalocyanine dichloride

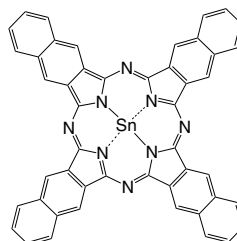
CAS No.	: 26857-61-4
Grade	: Sublimed product
Formula	: C ₄₈ H ₂₄ Cl ₂ N ₈ Sn
M.W.	: 902.37 g/mole
TGA	: >300 °C (0.5% weight loss)



LT-S9182 | SnNC

Tin(II) 2,3-naphthalocyanine

CAS No.	: 110479-58-8
Grade	: Sublimed product
Formula	: C ₄₈ H ₂₄ N ₈ Sn
M.W.	: 831.47 g/mole
TGA	: >300 °C (0.5% weight loss)

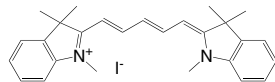


Near-Infrared (NIR) Dyes

LT-D1237 | HIDC iodide

1,1',3,3,3',3'-Hexamethylindodicarbocyanine iodide

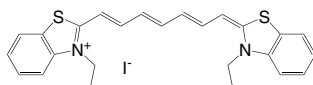
CAS No. : 36536-22-8
 Grade : >98% (NMR)
 Formula : $C_{27}H_{31}IN_2$
 M.W. : 510.45 g/mole
 UV : 643 nm (in EtOH)
 PL : 670 nm (in EtOH)



LT-D1242 | DTTC iodide

3,3'-Diethylthiatricarbocyanine iodide

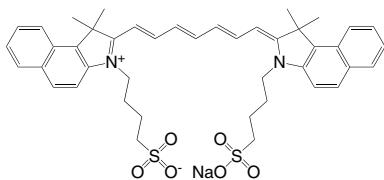
CAS No. : 3071-70-3
 Grade : >98%
 Formula : $C_{25}H_{25}IN_2S_2$
 M.W. : 544.51 g/mole
 UV : 761 nm (in EtOH)
 PL : 813 nm (in EtOH)



LT-D1243 | Indocyanine green

Sodium 2-(7-(3,3-dimethyl-1-(4-sulfonatobutyl)benz(e)indolin-2-ylidene)hepta-1,3,5-trien-1-yl)-3,3-dimethyl-1-(4-sulfonatobutyl)benz[e]indolinium

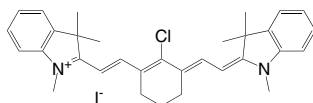
CAS No. : 3599-32-4
 Grade : >90% (NMR)
 Formula : $C_{43}H_{47}N_2NaO_6S_2$
 M.W. : 774.96 g/mole
 UV : 795 nm (in DMSO)
 PL : 832 nm (in DMSO)



LT-D1248 | IR-786

2-[2-[2-Chloro-3-[(1,3-dihydro-1,3,3-trimethyl-2H-indol-2-ylidene)ethylidene]-1-cyclohexen-1-yl]ethenyl]-1,3,3-trimethylindolium iodide

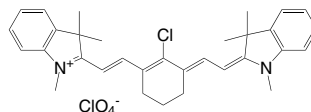
CAS No. : 56289-67-9
 Grade : >98% (NMR)
 Formula : $C_{32}H_{36}ClIN_2$
 M.W. : 611.02 g/mole
 UV : 775 nm (in MeOH)
 PL : 817 nm (in MeOH)



LT-D1249 | IR-786 perchlorate

2-[2-[2-Chloro-3-[(1,3-dihydro-1,3,3-trimethyl-2H-indol-2-ylidene)ethylidene]-1-cyclohexen-1-yl]ethenyl]-1,3,3-trimethylindolium perchlorate

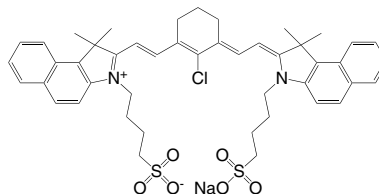
CAS No. : 102185-03-5
 Grade : >98%
 Formula : $C_{32}H_{36}Cl_2N_2O_4$
 M.W. : 583.55 g/mole
 UV : 775 nm (in MeOH)
 PL : 817 nm (in MeOH)



LT-D1263 | IR-820

2-[2-[2-Chloro-3-[[1,3-dihydro-1,1-dimethyl-3-(4-sulfobutyl)-2H-benzo[e]indol-2-ylidene]-ethylidene]-1-cyclohexen-1-yl]ethenyl]-1,1-dimethyl-3-(4-sulfobutyl)-1H-benzo[e]indolium hydroxide inner salt, sodium salt

CAS No. : 172616-80-7
 Grade : >80% (NMR)
 Formula : $C_{46}H_{50}ClN_2NaO_6S_2$
 M.W. : 849.47 g/mole
 UV : 820 nm (in MeOH)

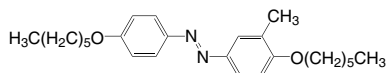


Photochromic Dyes

LT-D1264

4,4'-Bis(hexyloxy)-3-methylazobenzene

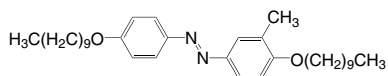
CAS No. : 1440509-03-4
 Grade : >95%
 Formula : $C_{25}H_{36}N_2O_2$
 M.W. : 396.58 g/mole



LT-D1265

4,4'-Bis(decyloxy)-3-methylazobenzene

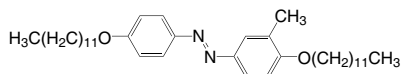
CAS No. : 1627844-78-3
 Grade : >95%
 Formula : $C_{33}H_{52}N_2O_2$
 M.W. : 508.79 g/mole



LT-D1266

4,4'-Bis(dodecyloxy)-3-methylazobenzene

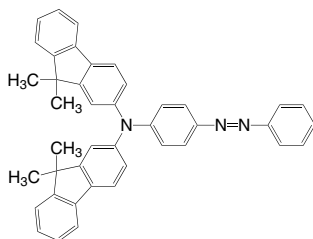
CAS No. : 1440509-01-2
 Grade : >93%
 Formula : $C_{37}H_{60}N_2O_2$
 M.W. : 564.9 g/mole



LT-D1267

4-[Bis(9,9-dimethylfluoren-2-yl)amino]azobenzene

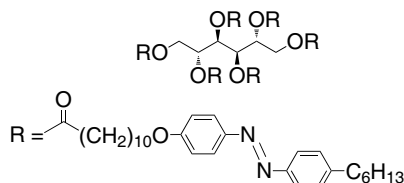
CAS No. : 883554-70-9
 Grade : >98%
 Formula : $C_{42}H_{35}N_3$
 M.W. : 581.76 g/mole



LT-D1268

1,2,3,4,5,6-Hexa-O-[11-[4-(4-hexylphenylazo)phenoxy]undecanoyl]-D-mannitol

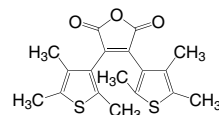
CAS No. : 1093077-77-0
 Grade : >97%
 Formula : $C_{180}H_{254}N_{12}O_{18}$
 M.W. : 2874.08 g/mole



LT-D1269

2,3-Bis(2,4,5-trimethyl-3-thienyl)maleic anhydride

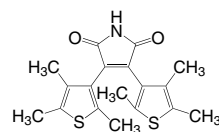
CAS No. : 112440-47-8
 Grade : >97%
 Formula : $C_{18}H_{18}O_3S_2$
 M.W. : 346.46 g/mole



LT-D1270

2,3-Bis(2,4,5-trimethyl-3-thienyl)maleimide

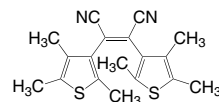
CAS No. : 220191-36-6
 Grade : >97%
 Formula : $C_{18}H_{19}NO_2S_2$
 M.W. : 345.48 g/mole



LT-D1271

cis-1,2-Dicyano-1,2-bis(2,4,5-trimethyl-3-thienyl)ethene

CAS No. : 112440-46-7
 Grade : >98%
 Formula : $C_{18}H_{18}N_2S_2$
 M.W. : 326.48 g/mole

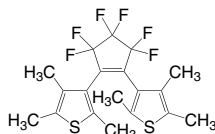


Photochromic Dyes

LT-D1272

1,2-Bis[2-methylbenzo[b]thiophen-3-yl]-3,3,4,4,5,5-hexafluoro-1-cyclopentene

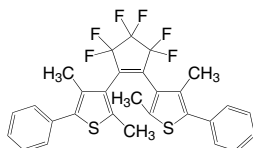
CAS No. : 137814-07-4
 Grade : >97%
 Formula : C₂₃H₁₄F₆S₂
 M.W. : 468.48 g/mole



LT-D1273

1,2-Bis(2,4-dimethyl-5-phenyl-3-thienyl)-3,3,4,4,5,5-hexafluoro-1-cyclopentene

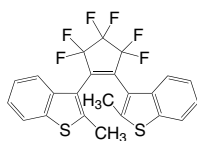
CAS No. : 172612-67-8
 Grade : >98%
 Formula : C₂₉H₂₂F₆S₂
 M.W. : 548.61 g/mole



LT-D1274

1,2-Bis[2-methylbenzo[b]thiophen-3-yl]-3,3,4,4,5,5-hexafluoro-1-cyclopentene

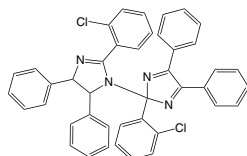
CAS No. : 137814-07-4
 Grade : >97%
 Formula : C₂₃H₁₄F₆S₂
 M.W. : 468.48 g/mole



LT-D1275

2,2'-Bis(2-chlorophenyl)-4,4',5,5'-tetraphenyl-1,2'-biimidazole

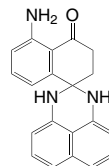
CAS No. : 7189-82-4
 Grade : >99%
 Formula : C₄₂H₂₈Cl₂N₄
 M.W. : 659.61 g/mole



LT-D1276

2,3-Dihydro-2-spiro-4'--[8'-aminonaphthalen-1'(4'H)-one]perimidine (contains o-form)

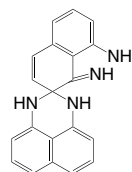
CAS No. : 851768-63-3
 Grade : >98%
 Formula : C₂₀H₁₅N₃O
 M.W. : 313.36 g/mole



LT-D1277

2,3-Dihydro-2-spiro-7'--[8'-imino-7',8'-dihydronaphthalen-1'-amine]perimidine

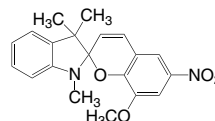
CAS No. : 851768-62-2
 Grade : >97%
 Formula : C₂₀H₁₆N₄
 M.W. : 312.38 g/mole



LT-D1278

1',3'-Dihydro-8-methoxy-1',3',3'-trimethyl-6-nitrospiro[2H-1-benzopyran-2,2'-[2H]indole]

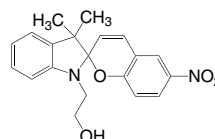
CAS No. : 1498-89-1
 Grade : >97%
 Formula : C₂₀H₂₀N₂O₄
 M.W. : 352.38 g/mole



LT-D1279

1-(2-Hydroxyethyl)-3,3-dimethylindolino-6'-nitrobenzopyrylospiran

CAS No. : 16111-07-2
 Grade : >93%
 Formula : C₂₀H₂₀N₂O₄
 M.W. : 352.38 g/mole

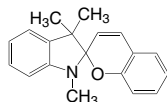


Photochromic Dyes

LT-D1280

1,3,3-Trimethylindolinobenzopyrrospiran

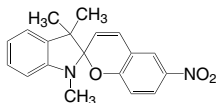
CAS No. : 1485-92-3
 Grade : >98%
 Formula : $C_{19}H_{19}NO$
 M.W. : 277.37 g/mole



LT-D1281

1,3,3-Trimethylindolino-6'-nitrobenzopyrrospiran

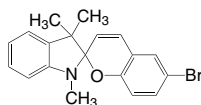
CAS No. : 1498-88-0
 Grade : >98%
 Formula : $C_{19}H_{18}N_2O_3$
 M.W. : 322.36 g/mole



LT-D1282

1,3,3-Trimethylindolino-6'-bromobenzopyrrospiran

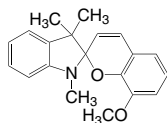
CAS No. : 16650-14-9
 Grade : >98%
 Formula : $C_{19}H_{18}BrNO$
 M.W. : 356.26 g/mole



LT-D1283

1,3,3-Trimethylindolino-8'-methoxybenzopyrrospiran

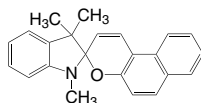
CAS No. : 13433-31-3
 Grade : >98%
 Formula : $C_{20}H_{21}NO_2$
 M.W. : 307.39 g/mole



LT-D1284

1,3,3-Trimethylindolino-β-naphthopyrrospiran

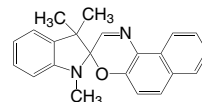
CAS No. : 1592-43-4
 Grade : >98%
 Formula : $C_{23}H_{21}NO$
 M.W. : 327.43 g/mole



LT-D1285

1,3,3-Trimethylindolinonaphthospirooxazine

CAS No. : 27333-47-7
 Grade : >98%
 Formula : $C_{22}H_{20}N_2O$
 M.W. : 328.42 g/mole

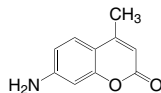


Coumarin Dyes

LT-D1213

7-Amino-4-methylcoumarin

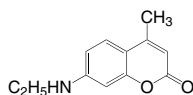
CAS No. : 26093-31-2
 Grade : >97%
 Formula : C₁₀H₉NO₂
 M.W. : 175.19 g/mole



LT-D1214

7-(Ethylamino)-4-methylcoumarin

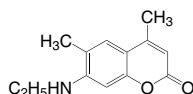
CAS No. : 28821-18-3
 Grade : >98%
 Formula : C₁₂H₁₃NO₂
 M.W. : 203.24 g/mole



LT-D1215

7-(Ethylamino)-4,6-dimethylcoumarin

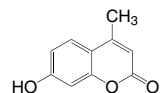
CAS No. : 26078-25-1
 Grade : >98%
 Formula : C₁₃H₁₅NO₂
 M.W. : 217.27 g/mole



LT-D1216

4-Methylumbelliferone

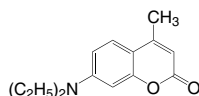
CAS No. : 90-33-5
 Grade : >98%
 Formula : C₁₀H₈O₃
 M.W. : 176.17 g/mole



LT-D1217

7-Diethylamino-4-methylcoumarin

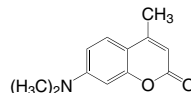
CAS No. : 91-44-1
 Grade : >98% (HPLC)
 Formula : C₁₄H₁₇NO₂
 M.W. : 231.3 g/mole



LT-D1218

7-(Dimethylamino)-4-methylcoumarin

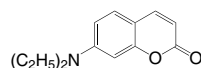
CAS No. : 87-01-4
 Grade : >98%
 Formula : C₁₂H₁₃NO₂
 M.W. : 203.24 g/mole



LT-D1219

7-(Diethylamino)coumarin

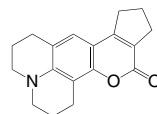
CAS No. : 20571-42-0
 Grade : >98%
 Formula : C₁₃H₁₅NO₂
 M.W. : 217.27 g/mole



LT-D1220

2,3,5,6,7,9,10,11-Octahydrocyclopenta[4,5]pyrano[2,3-f]pyrido[3,2,1-ij]quinolin-12(1H)-one

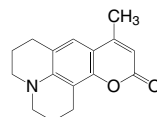
CAS No. : 41175-45-5
 Grade : >98%
 Formula : C₁₈H₁₉NO₂
 M.W. : 281.36 g/mole



LT-D1221

9-Ethyl-2,3,6,7-tetrahydro-1H-pyrano[2,3-f]pyrido[3,2,1-ij]quinolin-11(5H)-one

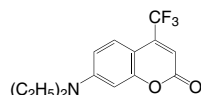
CAS No. : 41267-76-9
 Grade : >97%
 Formula : C₁₆H₁₇NO₂
 M.W. : 255.32 g/mole



LT-D1222

7-(Diethylamino)-4-(trifluoromethyl)-2H-chromen-2-one

CAS No. : 41934-47-8
 Grade : >96%
 Formula : C₁₄H₁₄F₃NO₂
 M.W. : 285.27 g/mole

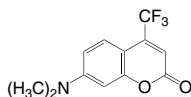


Coumarin Dyes

LT-D1223

7-(Dimethylamino)-4-(trifluoromethyl)-2H-chromen-2-one

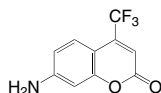
CAS No. : 53518-14-2
 Grade : >97%
 Formula : C₁₂H₁₀F₃NO₂
 M.W. : 257.21 g/mole



LT-D1225

7-Amino-4-(trifluoromethyl)-2H-chromen-2-one

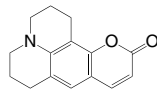
CAS No. : 53518-15-3
 Grade : >97%
 Formula : C₁₀H₆F₃NO₂
 M.W. : 229.16 g/mole



LT-D1226

2,3,6,7-Tetrahydro-1H-pyrano[2,3-f]pyrido[3,2,1-ij]quinolin-11(5H)-one

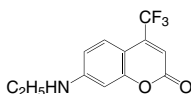
CAS No. : 58336-35-9
 Grade : >97%
 Formula : C₁₅H₁₅NO₂
 M.W. : 241.29 g/mole



LT-D1227

7-(Ethylamino)-4-(trifluoromethyl)-2H-chromen-2-one

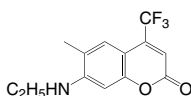
CAS No. : 52840-38-7
 Grade : >98%
 Formula : C₁₂H₁₀F₃NO₂
 M.W. : 257.21 g/mole



LT-D1228

7-(Ethylamino)-6-methyl-4-(trifluoromethyl)-2H-chromen-2-one

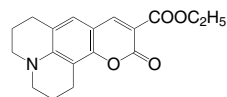
CAS No. : 55804-70-1
 Grade : >98%
 Formula : C₁₃H₁₂F₃NO₂
 M.W. : 271.24 g/mole



LT-D1229

Ethyl 11-oxo-2,3,5,6,7,11-hexahydro-1H-pyrano[2,3-f]pyrido[3,2,1-ij]quinoline-10-carboxylate

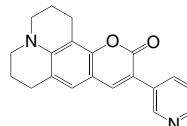
CAS No. : 55804-66-5
 Grade : >98%
 Formula : C₁₈H₁₉NO₄
 M.W. : 313.35 g/mole



LT-D1230

2,3,6,7-Tetrahydro-10-(3-pyridyl)-1H,5H,11H-[1]benzopyrano[6,7,8-ij]quinolizin-11-one

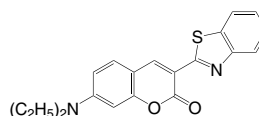
CAS No. : 87349-92-6
 Grade : >98%
 Formula : C₂₀H₁₈N₂O₂
 M.W. : 318.37 g/mole



LT-D1231

3-(Benzo[d]thiazol-2-yl)-7-(diethylamino)-2H-chromen-2-one

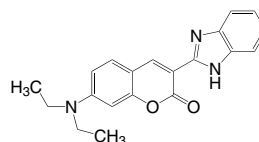
CAS No. : 38215-36-0
 Grade : >98%
 Formula : C₂₀H₁₈N₂O₂S
 M.W. : 350.44 g/mole



LT-D1286

3-(2-Benzimidazolyl)-7-(diethylamino)coumarin

CAS No. : 27425-55-4
 Grade : >98%
 Formula : C₂₀H₁₉N₃O₂
 M.W. : 333.39 g/mole

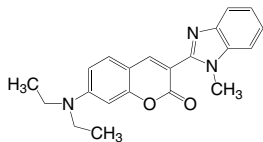


Coumarin Dyes

LT-D1288

7-(Diethylamino)-3-(1-methyl-2-benzimidazolyl)coumarin

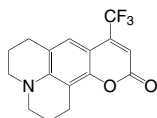
CAS No. : 41044-12-6
 Grade : >98%
 Formula : $C_{21}H_{21}N_3O_2$
 M.W. : 347.42 g/mole



LT-D1289

2,3,6,7-Tetrahydro-9-(trifluoromethyl)-1H,5H,11H-[1]benzopyrano[6,7,8-ij]quinolizin-11-one

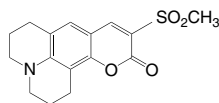
CAS No. : 53518-18-6
 Grade : >98%
 Formula : $C_{16}H_{14}F_3NO_2$
 M.W. : 309.29 g/mole



LT-D1290

2,3,6,7-Tetrahydro-10-(methylsulfonyl)-1H,5H,11H-[1]benzopyrano[6,7,8-ij]quinolizin-11-one

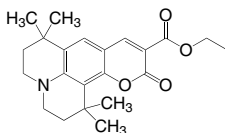
CAS No. : 87331-48-4
 Grade : >98%
 Formula : $C_{16}H_{17}NO_4S$
 M.W. : 319.38 g/mole



LT-D1291

Ethyl 2,3,6,7-tetrahydro-1,1,7,7-tetramethyl-11-oxo-1H,5H,11H-[1]benzopyrano[6,7,8-ij]quinolizine-10-carboxylate

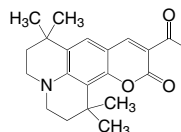
CAS No. : 113869-06-0
 Grade : >98%
 Formula : $C_{22}H_{27}NO_4$
 M.W. : 369.46 g/mole



LT-D1292

10-Acetyl-2,3,6,7-tetrahydro-1,1,7,7-tetramethyl-1H,5H,11H-[1]benzopyrano[6,7,8-ij]quinolizin-11-one

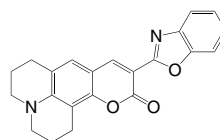
CAS No. : 114768-72-8
 Grade : >98%
 Formula : $C_{21}H_{25}NO_3$
 M.W. : 339.44 g/mole



LT-D1293

10-(2-Benzoxazolyl)-2,3,6,7-tetrahydro-1H,5H,11H-[1]benzopyrano[6,7,8-ij]quinolizin-11-one

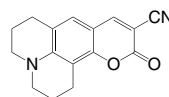
CAS No. : 87331-47-3
 Grade : >97%
 Formula : $C_{22}H_{18}N_2O_3$
 M.W. : 358.4 g/mole



LT-D1294

2,3,6,7-Tetrahydro-11-oxo-1H,5H,11H-[1]benzopyrano[6,7,8-ij]quinolizine-10-carbonitrile

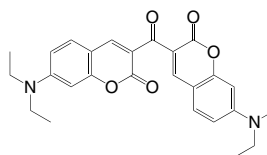
CAS No. : 55804-68-7
 Grade : >98%
 Formula : $C_{16}H_{14}N_2O_2$
 M.W. : 266.3 g/mole



LT-D1295

3,3'-Carbonyl-bis(7-diethylaminocoumarin)

CAS No. : 63226-13-1
 Grade : >98% (HPLC)
 Formula : $C_{27}H_{28}N_2O_5$
 M.W. : 460.53 g/mole

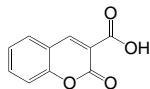


Coumarin Dyes

LT-D1296

Coumarin-3-carboxylic Acid

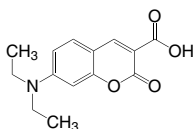
CAS No. : 531-81-7
 Grade : >98%
 Formula : $C_{10}H_6O_4$
 M.W. : 190.15 g/mole



LT-D1297

7-(Diethylamino)coumarin-3-carboxylic Acid

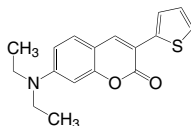
CAS No. : 50995-74-9
 Grade : >98%
 Formula : $C_{14}H_{15}NO_4$
 M.W. : 261.28 g/mole



LT-D1298

7-(Diethylamino)-3-(2-thienyl)coumarin

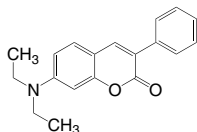
CAS No. : 117850-52-9
 Grade : >98%
 Formula : $C_{17}H_{17}NO_2S$
 M.W. : 299.39 g/mole



LT-D1299

7-(Diethylamino)-3-phenylcoumarin

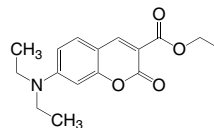
CAS No. : 84865-19-0
 Grade : >98%
 Formula : $C_{19}H_{19}NO_2$
 M.W. : 293.37 g/mole



LT-D1300

Ethyl 7-(diethylamino)coumarin-3-carboxylate

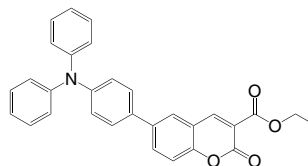
CAS No. : 28705-46-6
 Grade : >97%
 Formula : $C_{16}H_{19}NO_4$
 M.W. : 289.33 g/mole



LT-D1301

Ethyl 6-[4-(diphenylamino)phenyl]coumarin-3-carboxylate

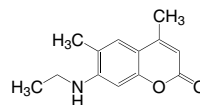
CAS No. : 1056693-13-0
 Grade : >98%
 Formula : $C_{30}H_{23}NO_4$
 M.W. : 461.52 g/mole



LT-D1302

7-(Ethylamino)-4,6-dimethylcoumarin

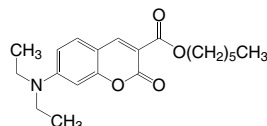
CAS No. : 26078-25-1
 Grade : >98%(GC)
 Formula : $C_{13}H_{15}NO_2$
 M.W. : 217.27 g/mole



LT-D1303

Hexyl 7-(diethylamino)coumarin-3-carboxylate

CAS No. : 851963-03-6
 Grade : >98%
 Formula : $C_{20}H_{27}NO_4$
 M.W. : 345.44 g/mole

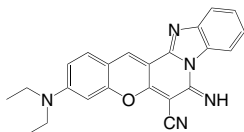


Coumarin Dyes

LT-D1304

3-(Diethylamino)-7-imino-7H-benzo[4,5]imidazo[1,2-a]chromeno[3,2-c]pyridine-6-carbonitrile

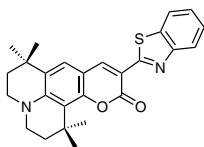
CAS No. : 52372-39-1
 Grade : >98%
 Formula : $C_{23}H_{19}N_3O$
 M.W. : 381.44 g/mole



LT-E502 C545T

10-(2-Benzothiazolyl)-2,3,6,7-tetrahydro-1,1,7,7-tetramethyl-1H,5H,11H-[1]benzopyrano[6,7,8-ij]quinolizin-11-one

CAS No. : 155306-71-1
 Grade : Sublimed >99%
 Formula : $C_{26}H_{26}N_2O_2S$
 M.W. : 430.57 g/mole
 UV : 473 nm (in THF)
 PL : 506 nm (in THF)
 TGA : >240 °C (0.5% weight loss)

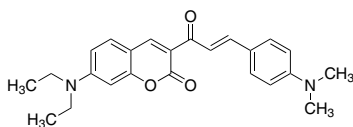


LT-S9550 C1

NEW

(E)-7-(diethylamino)-3-(3-(4-(dimethylamino)phenyl)acryloyl)-2H-chromen-2-one

CAS No. : 87897-19-6
 Grade : >99%
 Formula : $C_{24}H_{26}N_2O_3$
 M.W. : 390.47 g/mole

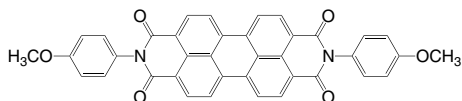


Perylene Dyes

LT-D1305

N,N'-Bis(4-methoxyphenyl)-3,4,9,10-perylenetetracarboxylic diimide

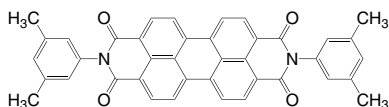
CAS No. : 6424-77-7
 Grade : Sublimed >99%
 Formula : $C_{38}H_{22}N_2O_6$
 M.W. : 602.6 g/mole



LT-D1306

N,N'-Bis(3,5-dimethylphenyl)-3,4,9,10-perylenetetracarboxylic diimide

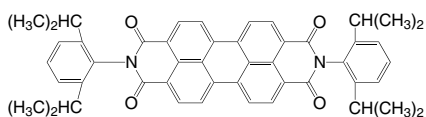
CAS No. : 4948-15-6
 Grade : Sublimed >99%
 Formula : $C_{40}H_{26}N_2O_4$
 M.W. : 598.66 g/mole



LT-D1307

N,N'-Bis(2,6-diisopropylphenyl)-3,4,9,10-perylenetetracarboxylic diimide

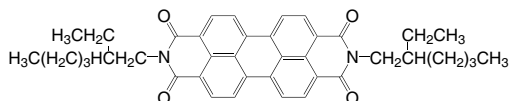
CAS No. : 82953-57-9
 Grade : Sublimed >99% (HPLC)
 Formula : $C_{48}H_{42}N_2O_4$
 M.W. : 710.87 g/mole



LT-D1308

N,N'-Bis(2-ethylhexyl)-3,4,9,10-perylenetetracarboxylic diimide

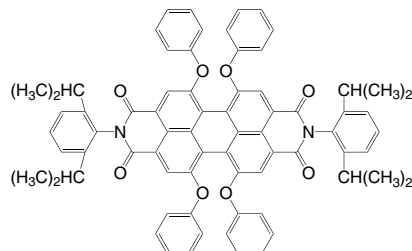
CAS No. : 82531-03-1
 Grade : Sublimed >99% (HPLC)
 Formula : $C_{40}H_{42}N_2O_4$
 M.W. : 614.79 g/mole



LT-D1309

N,N'-Bis(2,6-diisopropylphenyl)-1,6,7,12-tetra-phenoxyl-3,4,9,10-perylenetetracarboxylic diimide

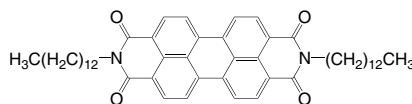
CAS No. : 123174-58-3
 Grade : >95% (HPLC)
 Formula : $C_{72}H_{58}N_2O_8$
 M.W. : 1079.26 g/mole



LT-D1310

N,N'-Ditridecyl-3,4,9,10-perylenetetracarboxylic diimide

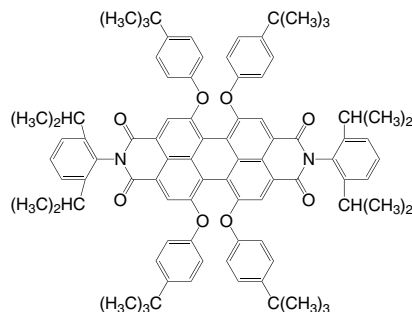
CAS No. : 95689-92-2
 Grade : Sublimed >99%
 Formula : $C_{50}H_{62}N_2O_4$
 M.W. : 755.06 g/mole



LT-D1311

1,6,7,12-Tetrakis(4-tert-butylphenoxy)-N,N'-bis(2,6-diisopropylphenyl)-3,4,9,10-perylenetetracarboxylic diimide

CAS No. : 112078-08-7
 Grade : >98%
 Formula : $C_{88}H_{90}N_2O_8$
 M.W. : 1303.69 g/mole



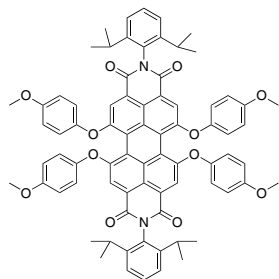
Perylene Dyes

LT-D1401

NEW

2,9-Bis(2,6-diisopropylphenyl)-5,6,12,13-tetrakis(4-methoxyphenoxy)anthra[2,1,9-def:6,5,10-d'e'f']diisoquinoline-1,3,8,10(2H,9H)-tetraone

Grade : >98%
Formula : $C_{76}H_{66}N_2O_{12}$
M.W. : 1199.34 g/mole

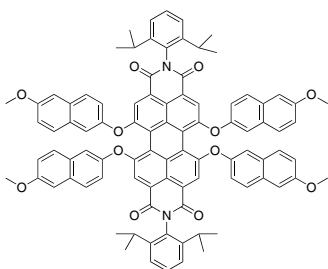


LT-D1402

NEW

2,9-Bis(2,6-diisopropylphenyl)-5,6,12,13-tetrakis((6-methoxynaphthalen-2-yl)oxy)anthra[2,1,9-def:6,5,10-d'e'f']diisoquinoline-1,3,8,10(2H,9H)-tetraone

Grade : >99%
Formula : $C_{92}H_{74}N_2O_{12}$
M.W. : 1399.58 g/mole

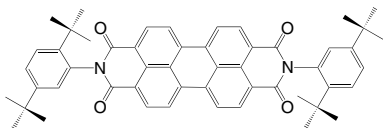


LT-S902

PDCDT

N,N' -Bis(2,5-di-tert-butylphenyl)-3,4,9,10-perylene dicarboximide

CAS No : 83054-80-2
Grade : Sublimed >99%
Formula : $C_{52}H_{50}N_2O_4$
M.W. : 766.96 g/mole
UV : 524 nm (in CH_2Cl_2)
PL : 544, 574 nm (in CH_2Cl_2)
TGA : >350 °C (0.5% weight loss)

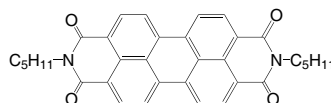


LT-S904

PenPTC

N,N' -Dipentyl-3,4,9,10-perylene dicarboximide

CAS No : 76372-75-3
Grade : Sublimed >99%
Formula : $C_{34}H_{30}N_2O_4$
M.W. : 530.61 g/mole
UV : 523 nm (in CH_2Cl_2)
PL : 535, 573 nm (in CH_2Cl_2)
TGA : >350 °C (0.5% weight loss)

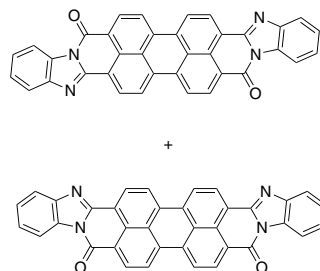


LT-S918

PTCBI

Bisbenzimidazo[2,1-a:1',2'-b']anthra[2,1,9-def:6,5,10-d'e'f']diisoquinoline-10,21-dione, with *cis* isomer

CAS No. : 79534-91-1
Grade : Sublimed >99%
Formula : $C_{36}H_{16}N_4O_2$
M.W. : 536.54 g/mole
PL : 414 nm (in CH_2Cl_2)
TGA : >420 °C (0.5% weight loss)

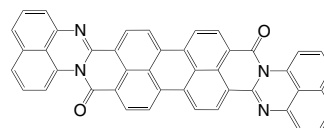


LT-S919

ADIDI

Anthra[2'':1'',9'':4,5,6,6',5'',10'':4',5',6']diisoquino[2,1-a:2',1'-a']diperimidine-12,25-dione, with *cis* isomer

CAS No : 6859-32-1
Grade : Sublimed >99%
Formula : $C_{44}H_{20}N_4O_2$
M.W. : 636.66 g/mole
PL : 413 nm (in CH_2Cl_2)
TGA : >430 °C (0.5% weight loss)

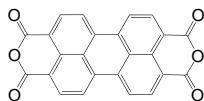


Perylene Dyes

LT-S920 | PTCDA

3,4,9,10-Perylenetetracarboxylic dianhydride

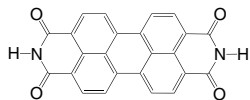
CAS No :128-69-8
 Grade :Sublimed >99%
 Formula :C₂₄H₈O₆
 M.W. :392.32 g/mole
 PL :413 nm (in CH₂Cl₂)
 TGA :>450 °C (0.5% weight loss)



LT-S921 | PTCDI

3,4,9,10-Perylenetetracarboxylic acid diimide

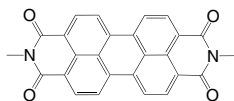
CAS No :81-33-4
 Grade :Sublimed >99%
 Formula :C₂₄H₁₀N₂O₄
 M.W. :390.35 g/mole
 PL :413 nm (in CH₂Cl₂)
 TGA :>450 °C (0.5% weight loss)



LT-S925 | MePTC

N,N'-Dimethyl-3,4,9,10-perylene dicarboximide

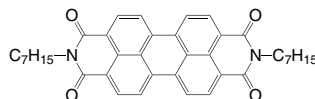
CAS No :5521-31-3
 Grade :Sublimed >99%
 Formula :C₂₆H₁₄N₂O₄
 M.W. :418.4 g/mole
 UV :522 nm (in CH₂Cl₂)
 PL :571 nm (in CH₂Cl₂)
 TGA :>440 °C (0.5% weight loss)



LT-S926 | HepPTC

N,N'-Diheptyl-3,4,9,10-perylene dicarboximide

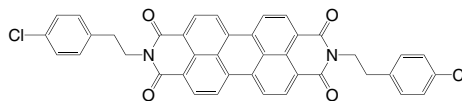
CAS No :95689-91-1
 Grade :Sublimed >99%
 Formula :C₃₈H₃₈N₂O₄
 M.W. :586.72 g/mole
 UV :524 nm (in CH₂Cl₂)
 PL :537, 571 nm (in CH₂Cl₂)
 TGA :>390 °C (0.5% weight loss)



LT-S935 | 4CIPEPTC

N,N'-Bis[2-(4-chloro-phenyl)-ethyl]-3,4,9,10-perylene dicarboximide

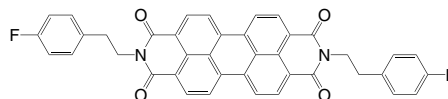
CAS No :215726-51-5
 Grade :Sublimed >99%
 Formula :C₄₀H₂₄Cl₂N₂O₄
 M.W. :667.53 g/mole
 UV :524 nm (in CH₂Cl₂)
 PL :544 nm (in CH₂Cl₂)
 TGA :>370 °C (0.5% weight loss)



LT-S936 | 4FPEPTC

N,N'-Bis[2-(4-fluoro-phenyl)-ethyl]-3,4,9,10-perylene dicarboximide

CAS No :215726-57-1
 Grade :Sublimed >99%
 Formula :C₄₀H₂₄F₂N₂O₄
 M.W. :634.63 g/mole
 UV :524 nm (in CH₂Cl₂)
 PL :538 nm (in CH₂Cl₂)
 TGA :>370 °C (0.5% weight loss)

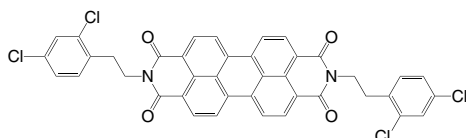


Perylene Dyes

LT-S937 | 24CIPEPTC

N,N'-Bis[2-(2,4-dichloro-phenyl)-ethyl]-3,4,9,10-perylene dicarboximide

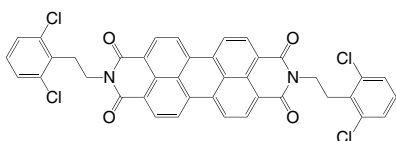
Grade :Sublimed >99%
 Formula :C₄₀H₂₂Cl₄N₂O₄
 M.W. :736.42 g/mole
 UV :524 nm (in CH₂Cl₂)
 PL :536 nm (in CH₂Cl₂)
 TGA :>390 °C (0.5% weight loss)



LT-S938 | 26CIPEPTC

N,N'-Bis[2-(2,6-dichloro-phenyl)-ethyl]-3,4,9,10-perylene dicarboximide

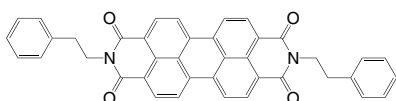
Grade :Sublimed >99%
 Formula :C₄₀H₂₂Cl₄N₂O₄
 M.W. :736.42 g/mole
 UV :524 nm (in CH₂Cl₂)
 PL :536 nm (in CH₂Cl₂)
 TGA :>440 °C (0.5% weight loss)



LT-S939 | PEPTC

N,N'-Bis(2-phenyl-ethyl)-3,4,9,10-perylene dicarboximide

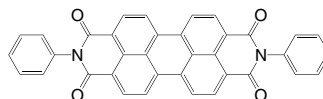
CAS No :67075-37-0
 Grade :Sublimed >99%
 Formula :C₄₀H₂₆N₂O₄
 M.W. :598.64 g/mole
 UV :524 nm (in CH₂Cl₂)
 PL :537 nm (in CH₂Cl₂)
 TGA :>390 °C (0.5% weight loss)



LT-S941 | DP-PTCDI

N,N'-Diphenyl-3,4,9,10-perylene dicarboximide

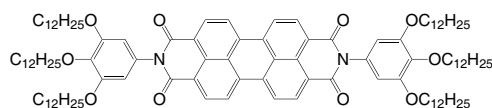
CAS No :128-65-4
 Grade :Sublimed >99%
 Formula :C₃₆H₁₈N₂O₄
 M.W. :542.54 g/mole
 UV :481, 515 nm (in THF)
 PL :531 nm (in THF)
 TGA :>380 °C (0.5% weight loss)



LT-S956 | PDI1

N,N'-Bis(3,4,5-tridodecyloxyphenyl)-3,4,9,10-perylene dicarboximide

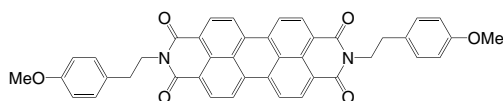
CAS No :351377-40-7
 Grade :>99% (NMR)
 Formula :C₁₀₈H₁₆₂N₂O₁₀
 M.W. :1648.45 g/mole
 UV :489, 526 nm (in CH₂Cl₂)
 TGA :>290 °C (0.5% weight loss)



LT-S960 | 4MeOPEPTC

N,N'-Bis[2-(4-methoxyphenyl)-ethyl]-3,4,9,10-perylene dicarboximide

CAS No :119215-14-4
 Grade :Sublimed >99%
 Formula :C₄₂H₃₀N₂O₆
 M.W. :658.70 g/mole
 UV :458, 524 nm (in CH₂Cl₂)
 PL :534 nm (in CH₂Cl₂)
 TGA :>370 °C (0.5% weight loss)

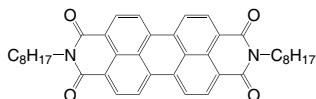


Perylene Dyes

LT-S970 | PTCDI-C8

N,N'-Dioctyl-3,4,9,10-perylene dicarboximide

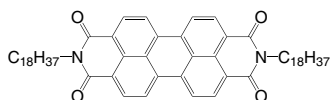
CAS No : 78151-58-3
 Grade : Sublimed >99%
 Formula : $C_{40}H_{42}N_2O_4$
 M.W. : 614.77 g/mole
 UV : 456, 524 nm (in CH_2Cl_2)
 PL : 573 nm (in CH_2Cl_2)
 TGA : >390 °C (0.5% weight loss)



LT-S9041 | PTCDI-C18H37

N,N'-Dioctadecyl-3,4,9,10-perylenedicarboximide

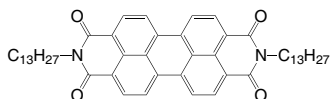
CAS No : 25834-02-0
 Grade : Sublimed >99%
 Formula : $C_{60}H_{82}N_2O_4$
 M.W. : 895.30 g/mole
 UV : 485, 520 nm (in Toluene)
 TGA : >340 °C (0.5% weight loss)



LT-S9042 | PTCDI-C13H27

N,N'-Ditridecyl-3,4,9,10-perylenedicarboximide

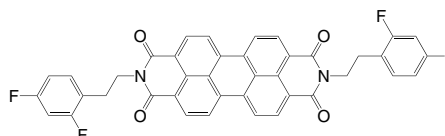
CAS No : 95689-92-2
 Grade : Sublimed >99%
 Formula : $C_{50}H_{62}N_2O_4$
 M.W. : 755.04 g/mole
 UV : 484, 520 nm (in Toluene)
 TGA : >390 °C (0.5% weight loss)



LT-S9049 | 24-FPEPTC

N,N'-Bis[2-(2,4-difluoro-phenyl)-ethyl]-3,4,9,10-perylene dicarboximide

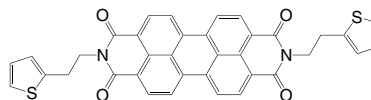
CAS No : 1644439-37-1
 Grade : Sublimed >99%
 Formula : $C_{40}H_{22}F_4N_2O_4$
 M.W. : 670.61 g/mole
 UV : 245 nm (in CH_2Cl_2)
 TGA : >340 °C (0.5% weight loss)



LT-S9059 | TEPTC

N,N'-Di(thiophen-2-yl)ethyl-3,4,9,10-perylene dicarboximide

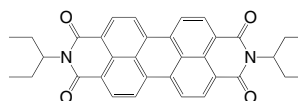
CAS No : 1559069-50-9
 Grade : Sublimed >99%
 Formula : $C_{36}H_{22}N_2O_4S_2$
 M.W. : 610.70 g/mole
 UV : 260 nm (in CH_2Cl_2)
 TGA : >400 °C (0.5% weight loss)



LT-S9092 | 3PenPTC

N,N'-Bis(ethylpropyl)perylene-3,4,9,10-tetracarboxylicdiimide

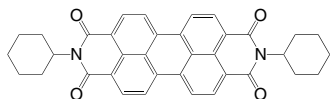
CAS No : 110590-81-3
 Grade : Sublimed >99%
 Formula : $C_{34}H_{30}N_2O_4$
 M.W. : 530.61 g/mole
 TGA : >270 °C (0.5% weight loss)



Perylene Dyes

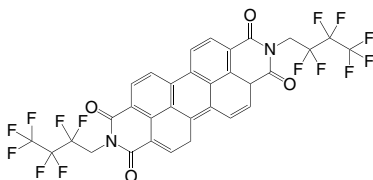
LT-S9093 | DCyPTC

N,N'-Dicyclohexylperylene-3,4,9,10-tetracarboxylicdiimide
 CAS No :41572-86-5
 Grade :Sublimed >99%
 Formula :C₃₆H₃₀N₂O₄
 M.W. :554.63 g/mole
 TGA :>350 °C (0.5% weight loss)



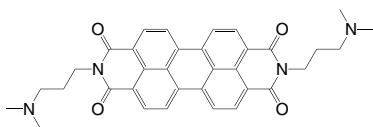
LT-S9132 | PTCPI-CH2C3F7

N,N'-Bis(2,2,3,3,4,4,4-heptafluorobutyl)-3,4,9,10-perylene dicarboximide
 CAS No :1150578-28-1
 Grade :Sublimed >99%
 Formula :C₃₂H₁₂F₁₄N₂O₄
 M.W. :756.44 g/mole
 TGA :>300 °C (0.5% weight loss)



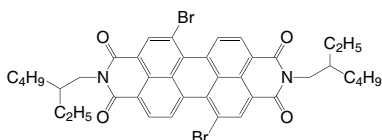
LT-S9268 | PDIN

2,9-Bis(3-(dimethylamino)propyl)anthra[2,1,9-def:6,5,10-d'e'f'] diisoquinoline-1,3,8,10(2H,9H)-tetraone
 CAS No :117901-97-0
 Formula :C₃₄H₃₂N₄O₄
 M.W. :560.64 g/mole



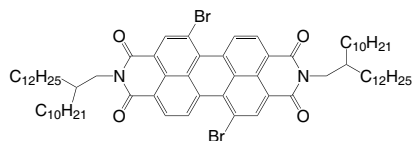
LT-S9269

5,12-Dibromo-2,9-bis(2-ethylhexyl)anthra[2,1,9-def:6,5,10-d'e'f']-diisoquinoline-1,3,8,10(2H,9H)-tetraone
 CAS No :851786-15-7
 Formula :C₄₀H₄₀Br₂N₂O₄
 M.W. :772.56 g/mole



LT-S9270

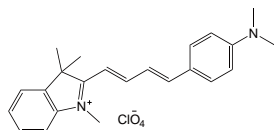
5,12-Dibromo-2,9-bis(2-decyltetradecyl)anthra[2,1,9-def:6,5,10-d'e'f']-diisoquinoline-1,3,8,10(2H,9H)-tetraone
 CAS No :909019-78-9
 Formula :C₇₂H₁₀₄Br₂N₂O₄
 M.W. :1221.42 g/mole



LT-D1233

2-(((1E,3E)-4-(4-(dimethylamino)phenyl)buta-1,3-dien-1-yl)-1,3,3-trimethyl-3H-indolium perchlorate

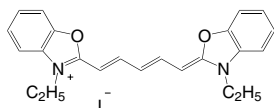
CAS No. : 76433-27-7
 Grade : >96%
 Formula : $C_{23}H_{31}ClN_2O_4$
 M.W. : 430.92 g/mole



LT-D1246

3,3'-Diethyloxadicarbocyanine iodide

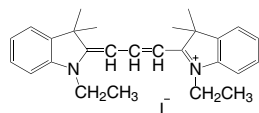
CAS No. : 14806-50-9
 Grade : >98%
 Formula : $C_{23}H_{23}IN_2O_2$
 M.W. : 486.35 g/mole



LT-D1312

1,1'-Diethyl-3,3,3',3'-tetramethylindocarbocyanine iodide

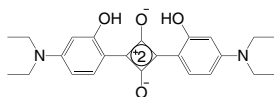
CAS No. : 14696-39-0
 Grade : >98%
 Formula : $C_{27}H_{33}IN_2$
 M.W. : 512.48 g/mole



LT-D1313

2,4-Bis[4-(diethylamino)-2-hydroxyphenyl]squaraine

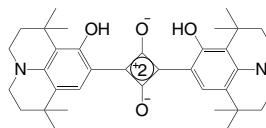
CAS No. : 68842-66-0
 Grade : >98%
 Formula : $C_{24}H_{28}N_2O_4$
 M.W. : 408.5 g/mole



LT-D1314

2,4-Bis[8-hydroxy-1,1,7,7-tetramethyljulolidin-9-yl]squaraine

CAS No. : 358727-55-6
 Grade : >98%
 Formula : $C_{36}H_{44}N_2O_4$
 M.W. : 568.76 g/mole

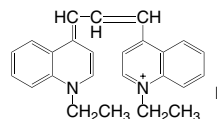


LT-D1315

Cryptocyanine

1,1'-Diethyl-4,4'-carbocyanine iodide

CAS No. : 4727-50-8
 Grade : >98%
 Formula : $C_{25}H_{25}IN_2$
 M.W. : 480.39 g/mole

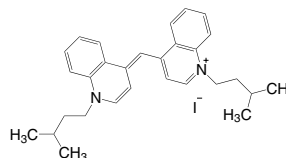


LT-D1316

Cyanine

1,1'-Diisoamyl-4,4'-cyanine iodide

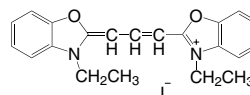
CAS No. : 523-42-2
 Grade : >98%
 Formula : $C_{29}H_{35}IN_2$
 M.W. : 538.52 g/mole



LT-D1317

3,3'-Diethyloxacarbocyanine iodide

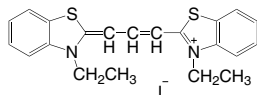
CAS No. : 905-96-4
 Grade : >98%
 Formula : $C_{21}H_{21}IN_2O_2$
 M.W. : 460.32 g/mole



LT-D1318

3,3'-Diethylthiacarbocyanine iodide

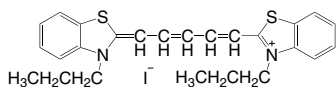
CAS No. : 905-97-5
 Grade : >98%
 Formula : $C_{21}H_{21}IN_2S_2$
 M.W. : 492.44 g/mole



LT-D1319

3,3'-Dipropylthiacarbocyanine iodide

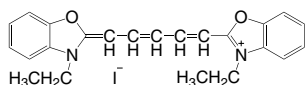
CAS No. : 53213-94-8
 Grade : >98%
 Formula : $C_{25}H_{27}IN_2S_2$
 M.W. : 546.53 g/mole



LT-D1320

3,3'-Diethyloxadiazocarbocyanine iodide

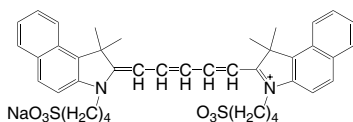
CAS No. : 14806-50-9
 Grade : >98%
 Formula : $C_{23}H_{23}IN_2O_2$
 M.W. : 486.35 g/mole



LT-D1321

3,3,3',3'-Tetramethyl-1,1'-bis(4-sulfobutyl)benzoindicarbocyanine sodium salt

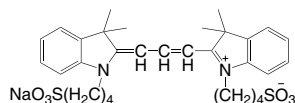
CAS No. : 64285-36-5
 Grade : >98%
 Formula : $C_{41}H_{45}N_2NaO_6S_2$
 M.W. : 748.93 g/mole



LT-D1322

3,3,3',3'-Tetramethyl-1,1'-bis(4-sulfobutyl)indocarbocyanine sodium salt

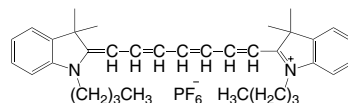
CAS No. : 120724-84-7
 Grade : >98%
 Formula : $C_{31}H_{39}N_2NaO_6S_2$
 M.W. : 622.77 g/mole



LT-D1323

1,1'-Dibutyl-3,3,3',3'-tetramethyl-indo-tricarbo-cyanine hexafluorophosphate

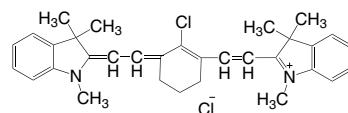
CAS No. : 134339-08-5
 Grade : >98%
 Formula : $C_{35}H_{45}F_6N_2P$
 M.W. : 638.72 g/mole



LT-D1324

2-[2-[2-Chloro-3-[2-(1,3-dihydro-1,3,3-trimethyl-2H-indol-2-ylidene)ethylidene]-1-cyclohexen-1-yl]ethenyl]-1,3,3-trimethyl-3H-indolium chloride

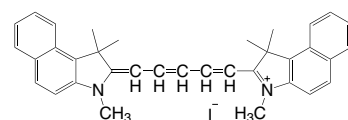
CAS No. : 199444-11-6
 Grade : >90%
 Formula : $C_{32}H_{36}Cl_2N_2$
 M.W. : 519.55 g/mole



LT-D1325

1,1,3-Trimethyl-2-[5-(1,1,3-trimethyl-1,3-dihydro-2H-benzo[e]-indol-2-ylidene)-1,3-pentadienyl]-1H-benzo[e]indolium iodide

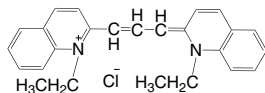
CAS No. : 56289-64-6
 Grade : >97%
 Formula : $C_{35}H_{35}IN_2$
 M.W. : 610.58 g/mole



LT-D1326

1,1'-Diethyl-2,2'-carbocyanine chloride

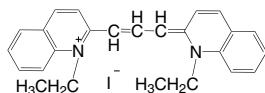
CAS No. : 2768-90-3
Grade : >90%
Formula : $C_{25}H_{25}ClN_2$
M.W. : 388.94 g/mole



LT-D1327

1,1'-Diethyl-2,2'-carbocyanine iodide

CAS No. : 605-91-4
Grade : >90%
Formula : $C_{25}H_{25}IN_2$
M.W. : 480.39 g/mole

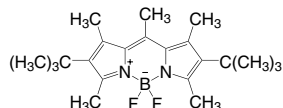


Dipyrrromethene Dyes

LT-D1328

[[[4-tert-Butyl-3,5-dimethyl-1H-pyrrol-2-yl](4-tert-butyl-3,5-dimethyl-2H-pyrrol-2-ylidene)methyl]methane](difluoroborane)

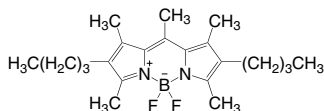
CAS No. : 137829-79-9
Grade : >98%
Formula : $C_{22}H_{33}BF_2N_2$
M.W. : 374.33 g/mole



LT-D1329

[[[4-Butyl-3,5-dimethyl-1H-pyrrol-2-yl](4-butyl-3,5-dimethyl-2H-pyrrol-2-ylidene)methyl]methane](difluoroborane)

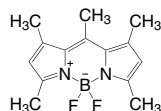
CAS No. : 151486-56-5
Grade : >97%
Formula : $C_{22}H_{33}BF_2N_2$
M.W. : 374.33 g/mole



LT-D1330

[[[3,5-Dimethyl-1H-pyrrol-2-yl](3,5-dimethyl-2H-pyrrol-2-ylidene)methyl]methane](difluoroborane)

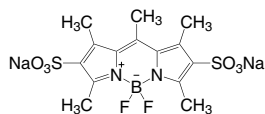
CAS No. : 121207-31-6
Grade : >98%
Formula : $C_{14}H_{17}BF_2N_2$
M.W. : 262.11 g/mole



LT-D1331

[[[3,5-Dimethyl-4-sulfo-1H-pyrrol-2-yl](3,5-dimethyl-4-sulfo-2H-pyrrol-2-ylidene)methyl]methane](difluoroborane) disodium salt

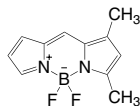
CAS No. : 121461-69-6
Grade : >96%
Formula : $C_{14}H_{15}BF_2N_2Na_2O_6S_2$
M.W. : 466.19 g/mole



LT-D1333

4,4-Difluoro-1,3-dimethyl-4-bora-3a,4a-diaza-s-indacene

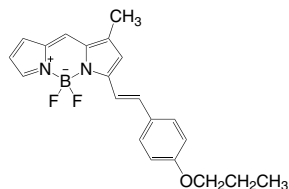
CAS No. : 154793-49-4
Grade : >98%
Formula : $C_{11}H_{11}BF_2N$
M.W. : 220.03 g/mole



LT-D1334

4,4-Difluoro-1-methyl-3-(4-propoxystyryl)-4-bora-3a,4a-diaza-s-indacene

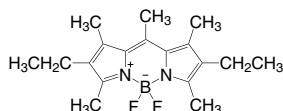
CAS No. : 1201643-08-4
Grade : >98%
Formula : $C_{21}H_{21}BF_2N_2O$
M.W. : 366.22 g/mole



LT-D1335

[[[4-Ethyl-3,5-dimethyl-1H-pyrrol-2-yl](4-ethyl-3,5-dimethyl-2H-pyrrol-2-ylidene)methyl]methane](difluoroborane)

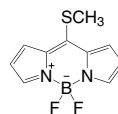
CAS No. : 131083-16-4
Grade : >98%
Formula : $C_{18}H_{25}BF_2N_2$
M.W. : 318.22 g/mole



LT-D1336

[2-[(Methylthio)(2H-pyrrol-2-ylidene)methyl]-1H-pyrrole](difluoroborane)

CAS No. : 892505-41-8
Grade : >98%
Formula : $C_{10}H_9BF_2N_2S$
M.W. : 238.06 g/mole

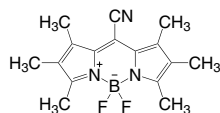


Dipyrrromethene Dyes

LT-D1337

[[[(3,4,5-Trimethyl-1H-pyrrol-2-yl)(3,4,5-trimethyl-2H-pyrrol-2-ylidene)methyl]carbonitrile](difluoroborane)

CAS No. : 157410-23-6
 Grade : >98%
 Formula : $C_{16}H_{18}BF_2N_3$
 M.W. : 301.15 g/mole



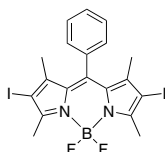
LT-D1392

IBDP

NEW

2,6-Diiodo-1,3,5,7-tetramethyl-8-phenyl-4,4-difluoroboradiazasindacene

CAS No. : 1083009-44-2
 Grade : >99%
 Formula : $C_{19}H_{17}BF_2I_2N_2$
 M.W. : 575.97 g/mole



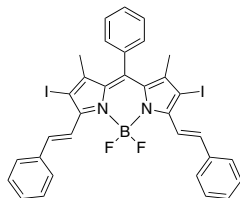
LT-D1393

Sty-IBDP

NEW

5,5-Difluoro-2,8-diiodo-1,9-dimethyl-10-phenyl-3,7-di((E)-styryl)-5H-dipyrrolo[1,2-c:2',1'-f][1,3,2]diazaborinin

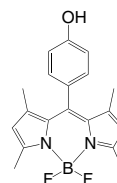
CAS No. : 1437797-58-4
 Grade : >99%
 Formula : $C_{33}H_{25}BF_2I_2N_2$
 M.W. : 752.18 g/mole



K1376

4,4-Difluoro-8-(4'-hydroxyphenyl)-1,3,5,7-tetramethyl-4-bora-3a,4a-diaza-s-indacene

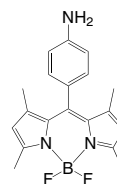
CAS No. : 870992-10-2
 Grade : >95%
 Formula : $C_{19}H_{19}BF_2N_2O$
 M.W. : 341.18 g/mole



K1377

4,4-Difluoro-8(4'-aminophenyl)-1,3,5,7-tetramethyl-4-bora-3a,4a-diaza-s-indacene

CAS No. : 321895-93-6
 Grade : >95%
 Formula : $C_{19}H_{20}BF_2N_3$
 M.W. : 339.19 g/mole

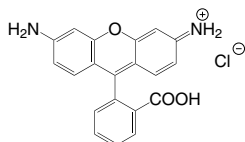


Xanthene Dyes

LT-D1232

6-Amino-9-(2-carboxyphenyl)-3H-xanthen-3-iminium chloride

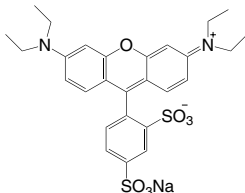
CAS No. : 13558-31-1
 Grade : >98%
 Formula : $C_{20}H_{15}ClN_2O_3$
 M.W. : 366.8 g/mole



LT-D1338

Sulforhodamine B sodium salt

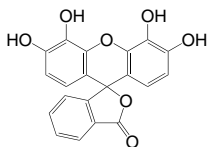
CAS No. : 3520-42-1
 Grade : >98%
 Formula : $C_{27}H_{29}N_2NaO_7S_2$
 M.W. : 580.65 g/mole



LT-D1339

Alizarin violet

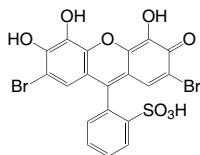
CAS No. : 2103-64-2
 Grade : >85%
 Formula : $C_{20}H_{12}O_7$
 M.W. : 364.31 g/mole



LT-D1340

Dibromopyrogallolsulfonphthaleine

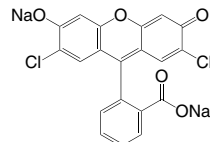
CAS No. : 16574-43-9
 Grade : >99%
 Formula : $C_{19}H_{10}Br_2O_8S$
 M.W. : 558.15 g/mole



LT-D1341

2',7'-Dichlorofluorescein sodium salt

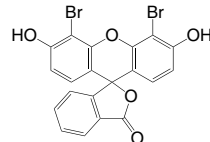
CAS No. : 80471-69-8
 Grade : >98%
 Formula : $C_{20}H_8Cl_2Na_2O_5$
 M.W. : 445.16 g/mole



LT-D1342

Dibromofluorescein

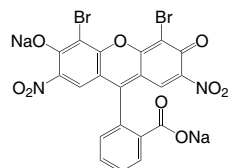
CAS No. : 596-03-2
 Grade : >98%
 Formula : $C_{20}H_{10}Br_2O_5$
 M.W. : 490.1 g/mole



LT-D1343

Acid Red 91

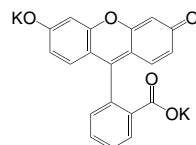
CAS No. : 548-24-3
 Grade : >85%
 Formula : $C_{20}H_6Br_2N_2Na_2O_9$
 M.W. : 624.06 g/mole



LT-D1344

Fluorescein potassium salt

CAS No. : 6417-85-2
 Grade : >98%
 Formula : $C_{20}H_{10}K_2O_5$
 M.W. : 408.49 g/mole

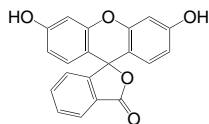


Xanthene Dyes

LT-D1345

Fluorescein

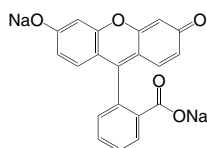
CAS No. : 2321-07-5
 Grade : >97%
 Formula : $C_{20}H_{12}O_5$
 M.W. : 332.31 g/mole



LT-D1346

Uranine

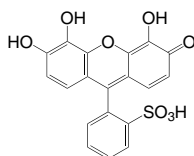
CAS No. : 518-47-8
 Grade : >90%
 Formula : $C_{20}H_{10}Na_2O_5$
 M.W. : 376.27 g/mole



LT-D1347

Pyrogallol Red

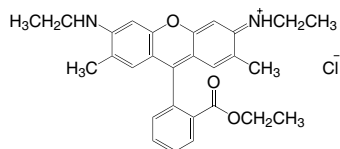
CAS No. : 32638-88-3
 Grade : >95%
 Formula : $C_{19}H_{12}O_8S$
 M.W. : 400.36 g/mole



LT-D1348

Rhodamine 6G

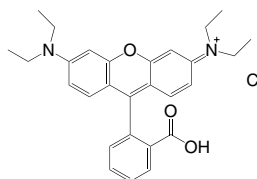
CAS No. : 989-38-8
 Grade : >97%
 Formula : $C_{28}H_{31}ClN_2O_3$
 M.W. : 479.02 g/mole



LT-D1349

Rhodamine B

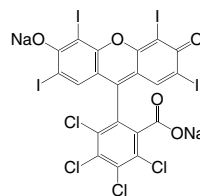
CAS No. : 81-88-9
 Grade : >95%
 Formula : $C_{28}H_{31}ClN_2O_3$
 M.W. : 479.02 g/mole



LT-D1350

Acid Red 94

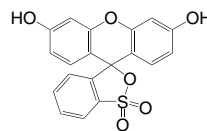
CAS No. : 632-69-9
 Grade : >90%
 Formula : $C_{20}H_2Cl_4I_4Na_2O_5$
 M.W. : 1017.64 g/mole



LT-D1351

Sulfonfluorescein

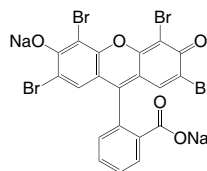
CAS No. : 4424-03-7
 Grade : >75%
 Formula : $C_{19}H_{12}O_6S$
 M.W. : 368.36 g/mole



LT-D1352

Acid Red 87

CAS No. : 17372-87-1
 Grade : >90%
 Formula : $C_{20}H_6Br_4Na_2O_5$
 M.W. : 691.86 g/mole

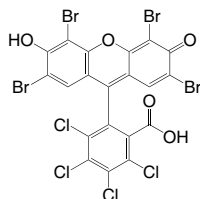


Xanthene Dyes

LT-D1353

2',4',5',7'-Tetrabromo-3,4,5,6-tetrachlorofluorescein

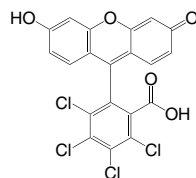
CAS No. : 13473-26-2
 Grade : >85%
 Formula : $C_{20}H_4Br_4Cl_4O_5$
 M.W. : 785.67 g/mole



LT-D1354

3,4,5,6-Tetrachlorofluorescein

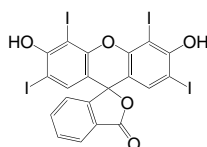
CAS No. : 6262-21-1
 Grade : >98%
 Formula : $C_{20}H_8Cl_4O_5$
 M.W. : 470.09 g/mole



LT-D1355

Tetraiodofluorescein

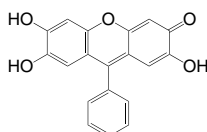
CAS No. : 15905-32-5
 Grade : >95%
 Formula : $C_{20}H_8I_4O_5$
 M.W. : 835.9 g/mole



LT-D1356

Phenylfluorone

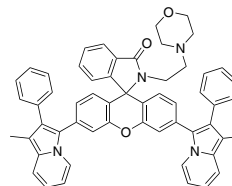
CAS No. : 975-17-7
 Grade : >99%
 Formula : $C_{19}H_{12}O_5$
 M.W. : 320.3 g/mole



LT-D1358

3',6'-bis(1-methyl-2-phenylindolizin-3-yl)-2-(2-morpholinoethyl)spiro[isindoline-1,9'-xanthen]-3-one

Grade : >98%
 Formula : $C_{56}H_{46}N_4O_3$
 M.W. : 822.99 g/mole



Quinacridone

LT-D1400

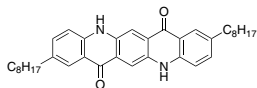
NEW

2,9-Dioctylquinolino[2,3-b]acridine-7,14(5H,12H)-dione

Grade : > 97%

Formula : $C_{36}H_{44}N_2O_2$

M.W. : 536.75 g/mole



LT-D3001

NEW

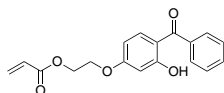
2-(4-Benzoyl-3-hydroxyphenoxy)ethyl acrylate

CAS No. :16432-81-8

Grade :>99%

Formula :C₁₈H₁₆O₅

M.W. :312.32 g/mole



LT-D3003

NEW

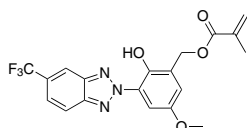
2-Hydroxy-5-methoxy-3-(5-(trifluoromethyl)-2H-benzo[d][1,2,3]triazol-2-yl)benzyl methacrylate

CAS No. :1224932-87-9

Grade :>97%

Formula :C₁₉H₁₆F₃N₃O₄

M.W. :407.34 g/mole



LT-D3004

NEW

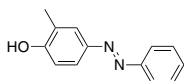
4-(Phenylazo)-o-cresol

CAS No. :621-66-9

Grade :>97%

Formula :C₁₃H₁₂N₂O

M.W. :212.25 g/mole



LT-D3005

NEW

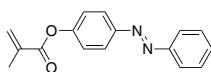
4-Methacryloyloxyazobenzene

CAS No. :128818-49-5

Grade :>97%

Formula :C₁₆H₁₄N₂O₂

M.W. :266.29 g/mole



LT-D3006

Disperse Yellow 3 **NEW**

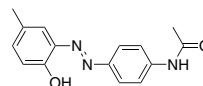
N-[4-[2-(2-Hydroxy-5-methylphenyl)diazenyl]phenyl]-acetamide

CAS No. :2832-40-8

Grade :>97%

Formula :C₁₅H₁₅N₃O₂

M.W. :269.3 g/mole



LT-D3007

NEW

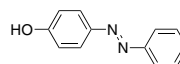
4-Phenylazophenol

CAS No. :1689-82-3

Grade :>98%

Formula :C₁₂H₁₀N₂O

M.W. :198.22 g/mole



LT-D3008

NEW

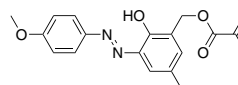
2-Hydroxy-3-((4-methoxyphenyl)diazenyl)-5-methylbenzyl methacrylate

CAS No. :1260217-37-5

Grade :>97%

Formula :C₁₉H₂₀N₂O₄

M.W. :340.37 g/mole



LT-D3009

NEW

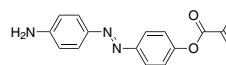
4-(p-Aminophenylazo)-phenylmethacrylat

CAS No. :53196-76-2

Grade :>97%

Formula :C₁₆H₁₅N₃O₂

M.W. :281.31 g/mole



LT-D3010

NEW

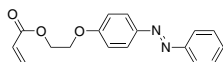
2-(4-Phenylazophenoxy)ethyl acrylate

CAS No. :213465-23-7

Grade :>97%

Formula :C₁₇H₁₆N₂O₃

M.W. :296.32 g/mole



LT-D3011

NEW

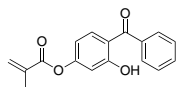
4-Methacryloxy-2-hydroxybenzophenone

CAS No. :2035-72-5

Grade :>99%

Formula :C₁₇H₁₄O₄

M.W. :282.29 g/mole



LT-D3012

NEW

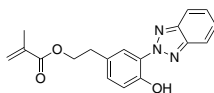
2-[3-(2H-Benzotriazol-2-yl)-4-hydroxyphenyl]ethyl methacrylate

CAS No. :96478-09-0

Grade :>98%

Formula :C₁₈H₁₇N₃O₃

M.W. :323.35 g/mole



LT-D3013

NEW

2-(((2-(4-Benzoyl-3-hydroxyphenoxy)ethoxy)carbonyl)amino)ethyl methacrylate

CAS No. :130873-11-9

Grade :>97%

Formula :C₂₂H₂₃NO₇

M.W. :413.42 g/mole

