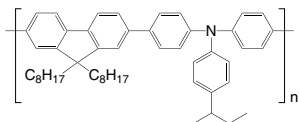


LT-N148 | TFB

Poly[(9,9-dioctylfluorenyl-2,7-diyl)-co-(4,4'-(N-(4-sec-butylphenyl)diphenylamine)]

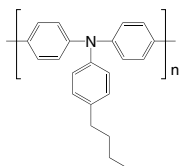
CAS No.	:220797-16-0
Grade	:Mw > 30,000 (GPC)
Formula	:(C ₅₁ H ₆₁ N)n
UV	:389 nm (in CH ₂ Cl ₂)
PL	:443 nm (in CH ₂ Cl ₂)
Solvent	:Soluble in CH ₂ Cl ₂ , Toluene, CHCl ₃



LT-N149 | Poly-TPD

Poly[N,N'-bis(4-butylphenyl)-N,N'-bis(phenyl)-benzidine]

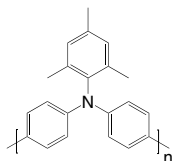
CAS No.	:472960-35-3
Grade	:Mw = 20,000~200,000 (GPC)
Formula	:(C ₂₂ H ₂₁ N)n
UV	:371, 388 nm (in CH ₂ Cl ₂)
PL	:424 nm (in CH ₂ Cl ₂)
Solvent	:Soluble in CHCl ₃ , Chlorobenzene



LT-N168 | PTAA

Poly[bis(4-phenyl)(2,4,6-trimethylphenyl)amine]

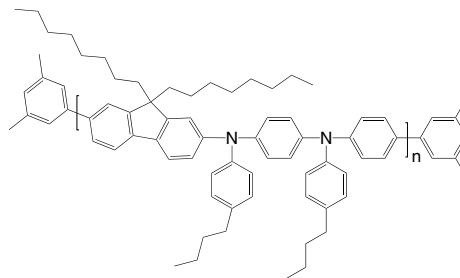
CAS No.	:1333317-99-9
Grade	:Mw = 20,000~100,000 (GPC)
Formula	:(C ₂₁ H ₁₉ N)n
UV	:388 nm (in CH ₂ Cl ₂)
PL	:424 nm (in CH ₂ Cl ₂)
Solvent	:Soluble in CHCl ₃ , Chlorobenzene, Dichlorobenzene



LT-N169

Poly[(9,9-dioctylfluorenyl-2,7-diyl)-co-(N,N'-diphenyl)-N,N'-di(p-butylphenyl)-1,4-diaminobenzene]] end capped with dimethylphenyl

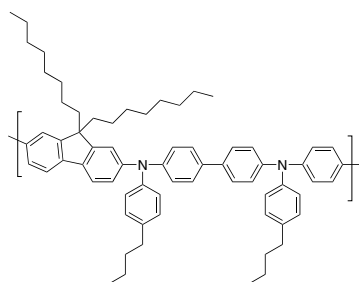
Grade	:Mw > 10,000 (GPC)
Formula	:C ₁₆ H ₁₈ (C ₆₇ H ₇₈ N ₂)n
UV	:380 nm (in THF)
PL	:494 nm (in THF)
Solvent	:Soluble in CHCl ₃ , Chlorobenzene, Dichlorobenzene



LT-N170 | BFB

Poly[(9,9-dioctylfluorenyl-2,7-diyl)-alt-(N,N'-bis(4-butylphenyl)-benzidine-N,N'-{1,4-diphenylene})]

CAS No.	:223569-32-2
Grade	:Mw > 10,000 (GPC)
Formula	:(C ₇₃ H ₈₂ N ₂)n
UV	:380 nm (in THF)
PL	:435 nm (in THF)
Solvent	:Soluble in CHCl ₃ , Chlorobenzene, Dichlorobenzene



LT-N171 | PFHB

Poly[(9,9-dihexylfluorenyl-2,7-diyl)-alt-(N,N'-bis-(p-butylphenyl)-1,4-diaminophenylene)]

CAS No. :870517-32-1

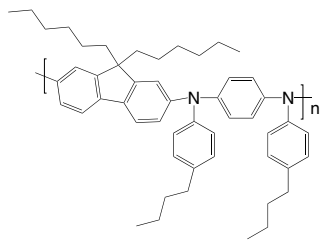
Grade :Mw > 10,000 (GPC)

Formula : $(C_{51}H_{62}N_2)_n$

UV :398 nm (in THF)

PL :425 nm (in THF)

Solvent :Soluble in $CHCl_3$, Chlorobenzene, Dichlorobenzene



LT-N172

Poly[(9,9-dioctylfluorenyl-2,7-diyl)-alt-(N,N'-bis(p-butylphenyl)-1,1'-biphenylene-4,4'-diamine)]

CAS No. :1115424-53-7

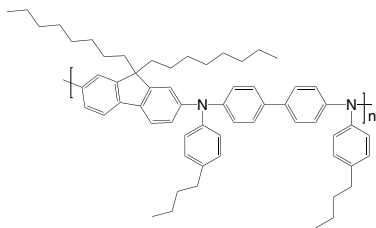
Grade :Mw > 10,000 (GPC)

Formula : $(C_{61}H_{74}N_2)_n$

UV :397 nm (in THF)

PL :420 nm (in THF)

Solvent :Soluble in $CHCl_3$, Chlorobenzene, Dichlorobenzene



LT-N174

Poly[(9,9-dioctylfluorenyl-2,7-diyl)-co-(4,4'-(N-(p-butylphenyl))diphenylamine)]

CAS No. :223569-31-1

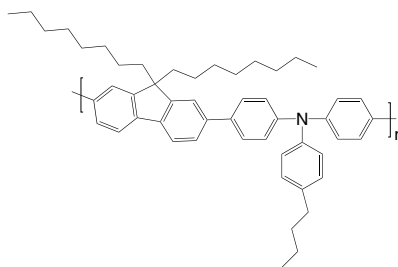
Grade :Mw > 30,000 (GPC)

Formula : $(C_{51}H_{61}N)_n$

UV :385 nm (in THF)

PL :434 nm (in THF)

Solvent :Soluble in $CHCl_3$, Chlorobenzene, Dichlorobenzene



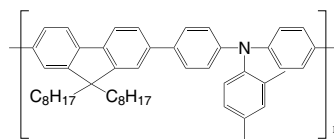
LT-N188 | PF8-TAA

Poly[(9,9-dioctylfluorenyl-2,7-diyl)-co-(4,4'-(N-(2,4-dimethylphenyl))diphenylamine)]

CAS No. :1178569-78-2

Grade :Mw = 20,000~50,000

Formula : $(C_{49}H_{57}N)_n$

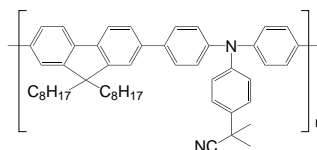


LT-N189 | iPrCN / CNPr-TFB

Poly[(9,9-dioctylfluorenyl-2,7-diyl)-co-(4,4'-(N-(diphenylamine))-(2-cyanoisopropylphenyl))]

Grade :Mw = 10,000~100,000 (GPC)

Formula : $(C_{51}H_{58}N_2)_n$



LT-N1021 | 1F-PTAA

NEW

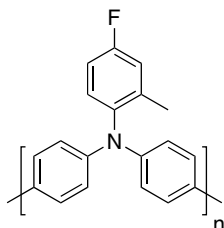
Poly(bis(4-phenyl)(4-fluoro-2-methylphenyl)amine

Grade :Mw >20,000

Formula : $(C_{19}H_{14}FN)_n$

HOMO : -5.52 eV

LUMO : -2.55 eV



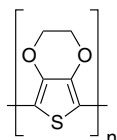
LT-EC015 | PEDOT

NEW

Poly(3,4-ethylenedioxythiophene)

CAS No. :126213-51-2

Formula : $(C_6H_4O_2S)_n$



LT-EC016 | PANI

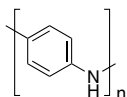
NEW

Polyaniline (emeraldine base)

CAS No. :25233-30-1

Grade :Mw >10,000

Formula : $(C_6H_5N)_n$



LT-EC017 | PPy

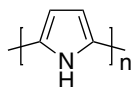
NEW

Polypyrrole

CAS No. :30604-81-0

Grade :10-50 S/cm (pressed pellet)

Formula : $(C_4H_3N)_n$



LT-EC019

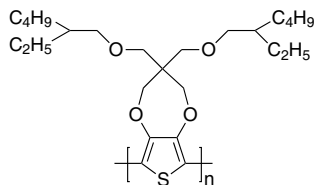
NEW

2H-Thieno[3,4-b][1,4]dioxepin, 3,3-bis[[2-ethylhexyl)oxy]methyl]-3,4-dihydro

CAS No. :634591-76-7

Grade :Mw >50,000

Formula : $(C_{25}H_{42}O_4S)_n$



LT-EC022 | PEGMA

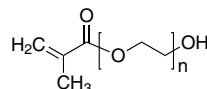
NEW

Poly(ethylene glycol) methacrylate

CAS No. :25736-86-1

Grade :Mw~500

Formula : $C_4H_5O(C_2H_4O)_nOH$



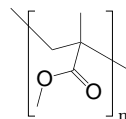
P214000000 | PMMA

Poly(methyl methacrylate)

CAS No. :9011-14-7

Grade :Mw >350,000

Formula : $[CH_2C(CH_3)(CO_2CH_3)]_n$



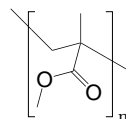
P215000000 | PMMA

Poly(methyl methacrylate)

CAS No. :9011-14-7

Grade :Mw >10,000~35,000

Formula : $[CH_2C(CH_3)(CO_2CH_3)]_n$



LT-S909 | P3HT

Poly(3-hexylthiophene-2,5-diyl)

CAS No. : 110134-47-9 / 104934-50-1

Grade : Mw >45,000 (GPC); Electronic Grade

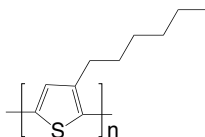
: Regio Regular >93%

Formula : $(C_{10}H_{14}S)_n$

UV : 445 nm (in THF)

PL : 564 nm (in THF)

Solvent : Soluble in $CHCl_3$, Chlorobenzene, Dichlorobenzene



LT-PS001 | PEDOT:PSS

Poly(3,4-ethylenedioxythiophene)-poly(styrenesulfonate)

Specification

CAS No. : 155090-83-8

Description : Aqueous dispersion, blue liquid.

Sodium : Max. 400 ppm

Sulfate : Max. 40 ppm

Solid content: 1.3 - 1.7 wt%

PSD d50 : 80 nm

PSD d90 : 100 nm

Resistivity : 500-5000 Ω cm

Viscosity : 5-12 mPas

Technical Data (guide values, not a specification)

Form : liquid

Odour : odourless

Colour : dark blue

PEDOT:PSS ratio: 1:6 (by weight)

PEDOT work function: approx 5.2 eV

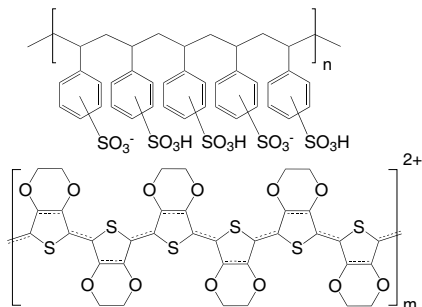
pH : 1.2 - 2.2 at 20 °C

Boiling Point : approx 100 °C

Storage:

The product is sensitive to frost and should therefore not be stored at temperatures below 5 °C.

Avoid freezing!



K0004

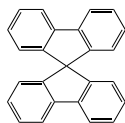
9,9'-Spirobifluorene

CAS No. :159-66-0

Grade :>98% (HPLC)

Formula :C₂₅H₁₆

M.W. :316.39 g/mole



K0033

9,9'-Spirobifluorene-2,2'-diamine

CAS No. :67665-45-6

Grade :>98% (HPLC)

Formula :C₂₅H₁₈N₂

M.W. :346.42 g/mole



K0092

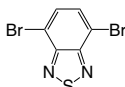
4,7-Dibromobenzo[c][1,2,5]thiadiazole

CAS No. :15155-41-6

Grade :>98% (HPLC)

Formula :C₆H₂Br₂N₂S

M.W. :293.97 g/mole



K0094

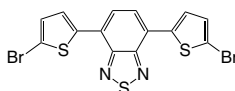
4,7-Bis(5-bromothiophen-2-yl)benzo[c][1,2,5]thiadiazole

CAS No. :288071-87-4

Grade :>98% (HPLC)

Formula :C₁₄H₆Br₂N₂S₃

M.W. :458.21 g/mole



K0264

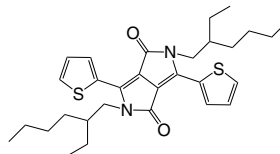
2,5-Bis(2-ethylhexyl)-3,6-di(thiophen-2-yl)pyrrolo[3,4-c]pyrrole-1,4(2H,5H)-dione

CAS No. :1185885-86-2

Grade :>97% (NMR)

Formula :C₃₀H₄₀N₂O₂S₂

M.W. :524.78 g/mole



K0291

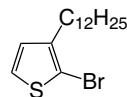
2-Bromo-3-dodecylthiophene

CAS No. :139100-06-4

Grade :>96% (HPLC)

Formula :C₁₆H₂₇BrS

M.W. :331.35 g/mole



K0330

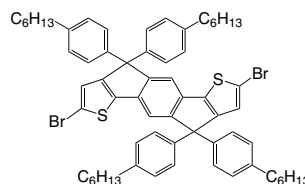
2,7-Dibromo-4,9-dihydro-4,4,9,9-tetrakis(4-hexylphenyl)-s-indaceno[1,2-b:5,6-b']dithiophene

CAS No. :1049034-71-0

Grade :>98% (HPLC)

Formula :C₆₄H₇₂Br₂S₂

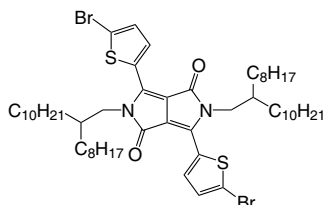
M.W. :1065.19 g/mole



K0445

3,6-Bis(5-bromothiophen-2-yl)-2,5-bis(2-octyldodecyl)pyrrole
[3,4-c]pyrrole-1,4(2H,5H)-dione

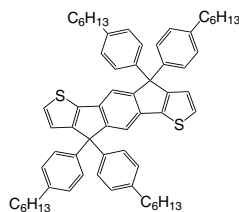
CAS No. :1260685-63-9
Grade :>98% (HPLC)
Formula :C₅₄H₈₆Br₂N₂O₂S₂
M.W. :1019.21 g/mole



K0555

4,9-Dihydro-4,4,9,9-tetrakis(4-hexylphenyl)-s-indaceno[1,2-b
:5,6-b']dithiophene

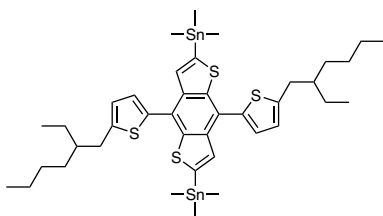
CAS No. :1049034-67-4
Grade :>98% (HPLC)
Formula :C₆₄H₇₄S₂
M.W. :907.4 g/mole



K0560

2,6-Bis(trimethyltin)-4,8-bis(5-(2-ethylhexyl)thiophen-2-yl)
benzo[1,2-b:4,5-b']dithiophene

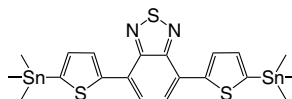
CAS No. :1352642-37-5
Grade :>98% (NMR)
Formula :C₄₀H₅₈S₄Sn₂
M.W. :904.57 g/mole



K0664

4,7-Bis(5-(trimethylstannyl)thiophen-2-yl)benzo[c][1,2,5]
thiadiazole

CAS No. :1025451-57-3
Grade :>98% (NMR)
Formula :C₂₀H₂₄N₂S₃Sn₂
M.W. :626.03 g/mole



K0735

2-Bromothiophene

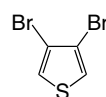
CAS No. :1003-09-4
Grade :>98% (HPLC)
Formula :C₄H₃BrS
M.W. :163.04 g/mole



K0737

3,4-Dibromothiophene

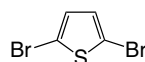
CAS No. :3141-26-2
Grade :>98% (HPLC)
Formula :C₄H₂Br₂S
M.W. :241.93 g/mole



K0738

2,5-Dibromothiophene

CAS No. :3141-27-3
Grade :>98% (HPLC)
Formula :C₄H₂Br₂S
M.W. :241.93 g/mole



K1128 | EDOT

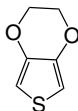
2,3-dihydrothieno[3,4-b][1,4]dioxine

CAS No. :126213-50-1

Grade :>99%

Formula :C₆H₆O₂S

M.W. :142.18 g/mole



K1207

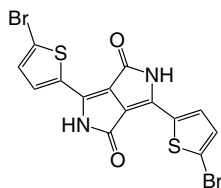
3,6-Bis(5-bromothiophen-2-yl)pyrrolo[3,4-c]pyrrole-1,4(2H,5H)-dione

CAS No. :777079-55-7

Grade :>98%

Formula :C₁₄H₆Br₂N₂O₂S₂

M.W. :458.15 g/mole



K1210

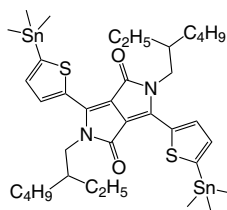
2,5-Bis(2-ethylhexyl)-3,6-bis(5-(trimethylstannyl)thiophen-2-yl)pyrrolo[3,4-c]pyrrole-1,4(2H,5H)-dione

CAS No. :1392422-47-7

Grade :>98%

Formula :C₃₆H₅₆N₂O₂S₂Sn₂

M.W. :850.39 g/mole



K1214

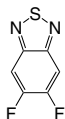
5,6-Difluorobenzo[c][1,2,5]thiadiazole

CAS No. :1293389-28-2

Grade :>98%

Formula :C₆H₂F₂N₂S

M.W. :172.16 g/mole



K1217

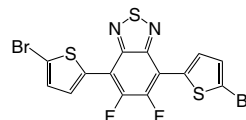
4,7-Bis(5-bromothiophen-2-yl)-5,6-difluorobenzo[c][1,2,5]thiadiazole

CAS No. :1304773-89-4

Grade :>98%

Formula :C₁₄H₄Br₂F₂N₂S₃

M.W. :494.19 g/mole



K1220

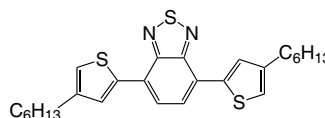
4,7-Bis(4-hexylthiophen-2-yl)benzo[c][1,2,5]thiadiazole

CAS No. :761416-46-0

Grade :>98%

Formula :C₂₆H₃₂N₂S₃

M.W. :468.74 g/mole



K1221

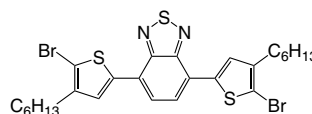
4,7-Bis(5-bromo-4-hexylthiophen-2-yl)benzo[c][1,2,5]thiadiazole

CAS No. :444579-39-9

Grade :>98%

Formula :C₂₆H₃₀Br₂N₂S₃

M.W. :626.53 g/mole



LT-EC010

NEW

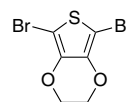
5,7-Dibromo-2,3-dihydrothieno[3,4-b][1,4]dioxine

CAS No. :174508-31-7

Grade :>98%

Formula :C₆H₄Br₂O₂S

M.W. :299.97 g/mole

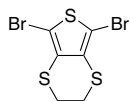


LT-EC011

NEW

2,5-Dibromo-3,4-Ethylenedithiophene

CAS No. :623573-55-7
 Grade :>98%
 Formula :C₆H₄Br₂S₃
 M.W. :332.1 g/mole



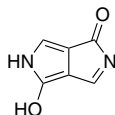
LT-EC012

DPP

NEW

Diketopyrrolopyrrole

CAS No. :114482-12-1
 Grade :>95%
 Formula :C₆H₄N₂O₂
 M.W. :136.11 g/mole

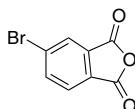


LT-EC013

NEW

5-Bromoisobenzofuran-1,3-dione

CAS No. :86-90-8
 Grade :>97%
 Formula :C₈H₃BrO₃
 M.W. :227.01 g/mole

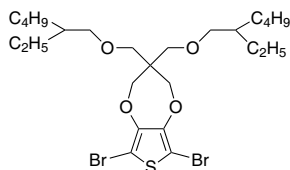


LT-EC018

NEW

6,8-Dibromo-3,3-bis((2-ethylhexyl)oxy)methyl)-3,4-dihydro-2H-thieno[3,4-b][1,4]dioxepine

CAS No. :700817-08-9
 Grade :>99%
 Formula :C₂₅H₄₂Br₂O₄S
 M.W. :598.47 g/mole



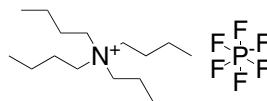
LT-EC020

TBAPF6

NEW

Tetrabutylammonium hexafluorophosphate

CAS No. :3109-63-5
 Grade :>99%
 Formula :C₁₆H₃₆F₆NP
 M.W. :387.43 g/mole



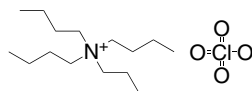
LT-EC021

TBAP

NEW

Tetrabutylammonium perchlorate

CAS No. :1923-70-2
 Grade :>98%
 Formula :C₁₆H₃₆ClNO₄
 M.W. :341.91 g/mole

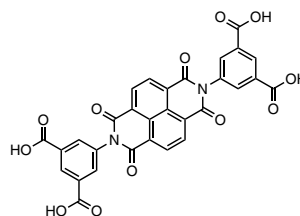


LT-MOF0226

H4BIPA-TC

5,5'-(1,3,6,8-tetraoxo-1,3,6,8-tetrahydrobenzo[Imn][3,8]phenanthroline-2,7-diyl)dibenzene-1,3-dicarboxylic acid

CAS No. :350024-36-1
 Grade :>95%
 Formula :C₃₀H₁₄N₂O₁₂
 M.W. :594.44 g/mole

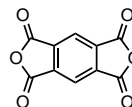


T0001

PMDA

Pyromellitic Dianhydride

CAS No. :89-32-7
 Grade :>99%
 Formula :C₁₀H₂O₆
 M.W. :218.12 g/mole



T0002 | BTDA

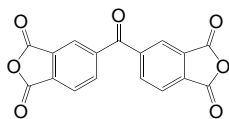
3,3',4,4'-Benzophenonetetracarboxylic Dianhydride

CAS No. :2421-28-5

Grade :>98%

Formula :C₁₇H₆O₇

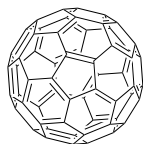
M.W. :322.23 g/mole



LT-S903 | C₆₀

Fullerene-C₆₀

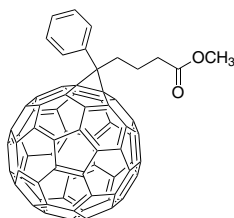
CAS No.	:99685-96-8
Grade	:>99.9% / >99.5%
Formula	:C ₆₀
M.W.	:720.64 g/mole
UV	:251 nm (in CH ₂ Cl ₂)
TGA	:>450 °C (0.5% weight loss)



LT-S905 | PCBM

(6,6)-Phenyl C₆₁ butyric acid methyl ester

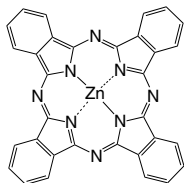
CAS No.	:160848-22-6
Grade	:>99.5%
Formula	:C ₇₂ H ₁₄ O ₂
M.W.	:910.88 g/mole
UV	:258, 328 nm (in THF)



LT-S906 | ZnPC

Zinc phthalocyanine

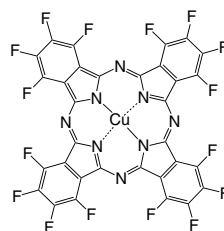
CAS No	:14320-04-8
Grade	:Sublimed >99%
Formula	:C ₃₂ H ₁₆ N ₈ Zn
M.W.	:577.92 g/mole
PL	:534 nm (in CH ₂ Cl ₂)



LT-S928 | F16CuPC

Copper(II)1,2,3,4,8,9,10,11,15,16,17,18,22,23,24,25-hexadecafluoro-29H,31H-phthalocyanine

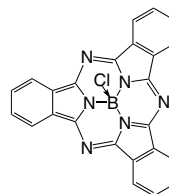
CAS No.	:14916-87-1
Grade	:Sublimed product
Formula	:C ₃₂ CuF ₁₆ N ₈
M.W.	:863.93 g/mole
UV	:690 nm (in THF)
TGA	:>400 °C (0.5% weight loss)



LT-S943 | SubPC

Boron subphthalocyanine chloride

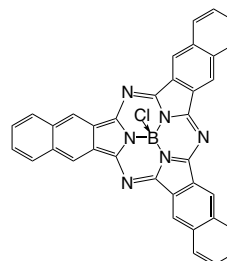
CAS No.	:36530-06-0
Grade	:Sublimed >99%
Formula	:C ₂₄ H ₁₂ BN ₆ Cl
M.W.	:430.66 g/mole
UV	:565 nm (in DMF)
PL	:577 nm (in DMF)
TGA	:>340 °C (0.5% weight loss)



LT-S947 | SubNC

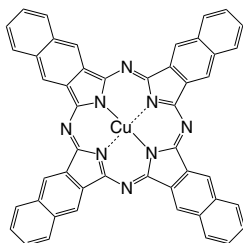
Boron sub-2,3-naphthalocyanine chloride

CAS No	:142710-56-3
Grade	:Sublimed >99%
Formula	:C ₃₆ H ₁₈ BClN ₆
M.W.	:580.83 g/mole
UV	:658 nm (in CH ₂ Cl ₂)
TGA	:>370 °C (0.5% weight loss)



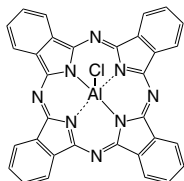
LT-S962 | CuNC

Copper(II) 2,3-naphthalocyanine
 CAS No :33273-09-5
 Grade :Sublimed >99% (TGA)
 Formula :C₄₈H₂₄CuN₈
 M.W. :776.30 g/mole
 UV :681 nm (in CH₂Cl₂)
 TGA :>430 °C (0.5% weight loss)



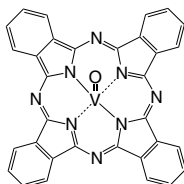
LT-S9025 | AIPCCl

Aluminum phthalocyanine chloride
 CAS No :14154-42-8
 Grade :Sublimed >99%
 Formula :C₃₂H₁₆AlClN₈
 M.W. :574.97 g/mole
 UV :675 nm (in DMF)
 TGA :>370 °C (0.5% weight loss)



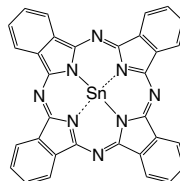
LT-S9053 | VOPC

Oxyvanadium phthalocyanine
 CAS No :13930-88-6
 Grade :Sublimed product
 Formula :C₃₂H₁₆N₈OV
 M.W. :579.47 g/mole
 UV :338, 684 nm (in CH₂Cl₂)



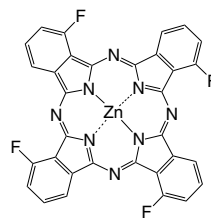
LT-S9086 | SnPC

Tin(II) phthalocyanine
 CAS No :15304-57-1
 Grade :Sublimed product
 Formula :C₃₂H₁₆N₈Sn
 M.W. :631.25 g/mole



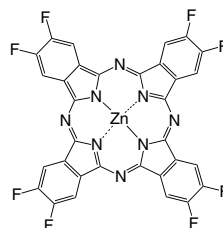
LT-S9171 | F4ZnPC

Zinc(II)-1,8,15,22-tetrafluoro-29H,31H-phthalocyanine, mixture of isomers
 CAS No :1120355-28-3
 Grade :Sublimed >99%
 Formula :C₃₂H₁₂F₄N₈Zn
 M.W. :649.89 g/mole
 UV :681 nm (in CHCl₃)
 TGA :>250 °C (0.5% weight loss)



LT-S9172 | F8ZnPC

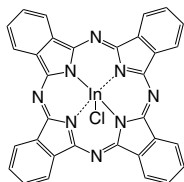
Zinc(II)-2,3,9,10,16,17,23,24-octafluoro-29H,31H-phthalocyanine
 CAS No. :676519-80-5
 Grade :Sublimed >99%
 Formula :C₃₂H₈F₈N₈Zn
 M.W. :721.86 g/mole
 UV :338, 656 nm (in DMF)
 TGA :>300 °C (0.5% weight loss)



LT-S9176 | InClPC

Indium(III) phthalocyanine chloride

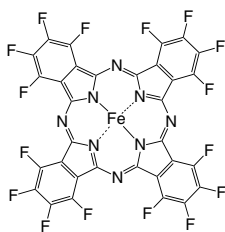
CAS No :19631-19-7
 Grade :Sublimed >99%
 Formula :C₃₂H₁₆ClInN₈
 M.W. :662.79 g/mole
 UV :358, 683 nm (in CHCl₃)
 TGA :>300 °C (0.5% weight loss)



LT-S9177 | F16FePC

Iron(II) 1,2,3,4,8,9,10,11,15,16,17,18,22,23,24,25-hexadecafluoro-29H,31H-phthalocyanine

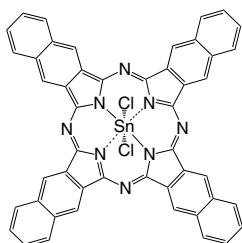
CAS No. :23844-93-1
 Grade :Sublimed >99%
 Formula :C₃₂F₁₆FeN₈
 M.W. :856.22 g/mole
 UV :333, 627 nm (in Acetone)
 TGA :>300 °C (0.5% weight loss)



LT-S9180 | SnNCCl2

Tin(IV) 2,3-naphthalocyanine dichloride

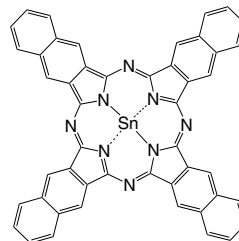
CAS No :26857-61-4
 Grade :Sublimed product
 Formula :C₄₈H₂₄Cl₂N₈Sn
 M.W. :902.37 g/mole
 TGA :>300 °C (0.5% weight loss)



LT-S9182 | SnNC

Tin(II) 2,3-naphthalocyanine

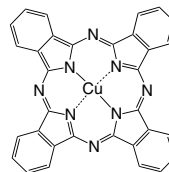
CAS No :110479-58-8
 Grade :Sublimed product
 Formula :C₄₈H₂₄N₈Sn
 M.W. :831.47 g/mole
 TGA :>300 °C (0.5% weight loss)



LT-E201 | CuPC

Copper(II) phthalocyanine

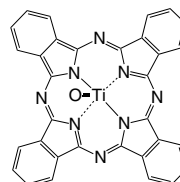
CAS No. :147-14-8
 Grade :Sublimed >99% / Unsublimed >97%
 Formula :C₃₂H₁₆CuN₈
 M.W. :576.08 g/mole
 UV :345, 631 nm (in CH₂Cl₂)
 PL :404 nm (film)
 TGA :>430 °C (0.5% weight loss)



LT-E206 | TiOPC

Titanium oxide phthalocyanine

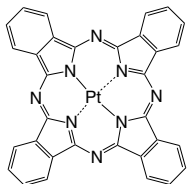
CAS No :26201-32-1
 Grade :Sublimed >99%
 Formula :C₃₂H₁₆N₈O₂Ti
 M.W. :576.39 g/mole
 UV :349, 692 nm (in CH₂Cl₂)
 PL :392 nm (film)
 TGA :>440 °C (0.5% weight loss)



LT-N219 | PtPC

Phthalocyanine platinum

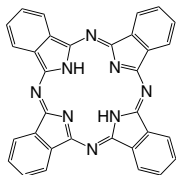
CAS No. :14075-08-2
 Grade :Sublimed >99%
 Formula : $C_{32}H_{16}N_8Pt$
 M.W. :707.6 g/mole
 UV :228, 270 nm (in CH_2Cl_2)
 PL :372.5 nm (in CH_2Cl_2)
 TGA :>460 °C (0.5% weight loss)



LT-N222 | H2PC

Phthalocyanine

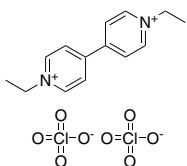
CAS No. :574-93-6
 Grade :Sublimed >98%
 Formula : $C_{32}H_{18}N_8$
 M.W. :514.54 g/mole
 UV :279, 693 nm
 PL :418 nm
 TGA :>350 °C (0.5% weight loss)



LT-EC014 | EV

Ethyl viologen dperchlorate

CAS No. :36305-51-8
 Grade :>98%
 Formula : $C_{14}H_{18}Cl_2N_2O_8$
 M.W. :413.21 g/mole

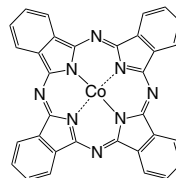


NEW

LT-D2001 | CoPC

Cobalt(II) phthalocyanine

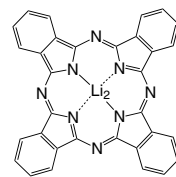
CAS No. :3317-67-7
 Grade :Sublimed product
 Formula : $C_{32}H_{16}CoN_8$
 M.W. :571.47 g/mole



LT-D2002 | Li2PC

Dilithium phthalocyanine

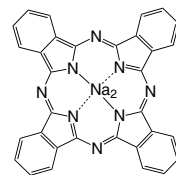
CAS No. :25510-41-2
 Grade :Sublimed product
 Formula : $C_{32}H_{16}Li_2N_8$
 M.W. :526.42 g/mole
 UV :658 nm (in DMF)



LT-D2003 | Na2PC

Disodium phthalocyanine

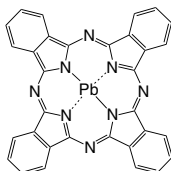
CAS No. :25476-27-1
 Grade :Sublimed product
 Formula : $C_{32}H_{16}Na_2N_8$
 M.W. :558.52 g/mole
 UV :656, 692 nm (in $CHCl_3$)



LT-D2004 | PbPC

Lead(II) phthalocyanine

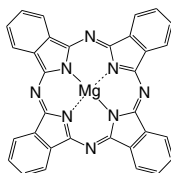
CAS No :15187-16-3
 Grade :Sublimed >99%
 Formula : $C_{32}H_{16}N_8Pb$
 M.W. :719.74 g/mole
 UV :698 nm (in DMF)



LT-D2006 | MgPC

Magnesium(II) phthalocyanine

CAS No :1661-03-6
 Grade :Sublimed product
 Formula : $C_{32}H_{16}N_8Mg$
 M.W. :536.84 g/mole
 UV :668 nm (in DMF)



LT-D2008 | SnCl2PC

Tin(IV) phthalocyanine dichloride

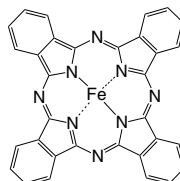
CAS No :18253-54-8
 Grade :Sublimed product
 Formula : $C_{32}H_{16}Cl_2N_8Sn$
 M.W. :702.15 g/mole



LT-D2009 | FePC

Iron(II) phthalocyanine

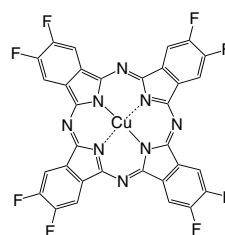
CAS No :132-16-1
 Grade :Sublimed product
 Formula : $C_{32}H_{16}FeN_8$
 M.W. :568.38 g/mole
 UV :675 nm (in DMF)



LT-D2010 | 2,3-F8CuPC

Copper(II) 2,3,9,10,16,17,23,24-octafluorophthalocyanine

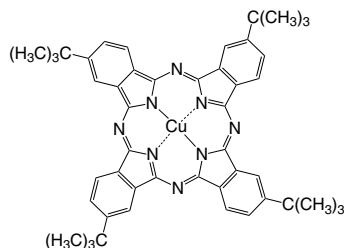
CAS No. :148651-60-9
 Grade :Sublimed product
 Formula : $C_{32}H_8CuF_8N_8$
 M.W. :720.01 g/mole



LT-D2011

Copper(II) 2,9,16,23-tetra-tert-butylphthalocyanine

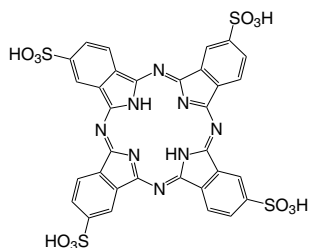
CAS No :39001-64-4
 Grade :Sublimed product
 Formula : $C_{48}H_{48}CuN_8$
 M.W. :800.51 g/mole
 UV :672 nm (in DMF)



LT-D2012

Phthalocyanine tetrasulfonic acid

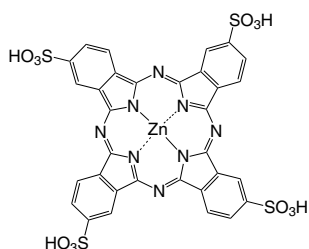
CAS No :33308-41-7
 Grade :>96% (with isomers)
 Formula : $C_{32}H_{18}N_8O_{12}S_4$
 M.W. :834.79 g/mole



LT-D2013

Zinc(II) phthalocyanine tetrasulfonic acid

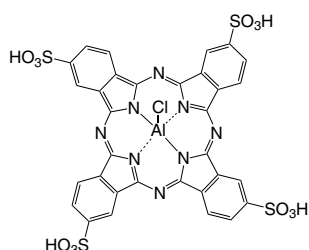
CAS No :61586-86-5
 Grade :>96% (with isomers)
 Formula : $C_{32}H_{16}N_8O_{12}S_4Zn$
 M.W. :898.19 g/mole



LT-D2014

Aluminum(III) phthalocyanine chloride tetrasulfonic acid

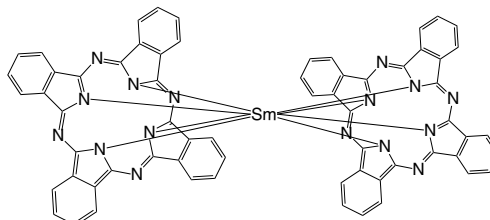
CAS No :100180-30-1
 Grade :>96% (with isomers)
 Formula : $C_{32}H_{16}AlClN_8O_{12}S_4$
 M.W. :895.21 g/mole



LT-D2015 SmPC2

Bis(2(3),9(10),16(17),23(24)-tetrakis-(3,4-phenyl)-phthalocyaninato)samarium(III)

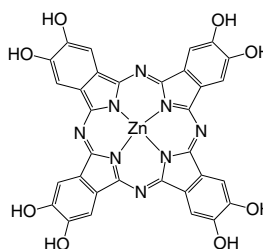
CAS No :82800-48-4
 Grade :>99%
 Formula : $C_{64}H_{32}N_{16}Sm$
 M.W. :1175.41 g/mole



LT-D2016 [OH]8ZnPC

2,3,9,10,16,17,23,24-Octahydroxy-phthalocyaninato zinc(II)

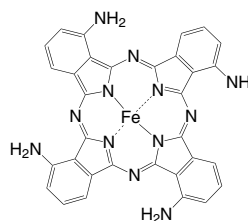
CAS No :121322-70-1
 Grade :>95%
 Formula : $C_{32}H_{16}N_8O_8Zn$
 M.W. :705.93 g/mole



LT-D2017

Iron(II) 1,8,15,22-tetraamino-phthalocyanine

Grade :>95%
 Formula : $C_{32}H_{20}FeN_{12}$
 M.W. :628.43 g/mole



LT-D2018

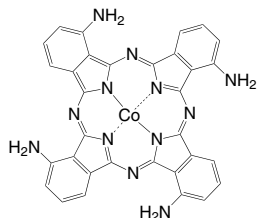
Cobalt(II) 1,8,15,22-tetraamino-phthalocyanine

CAS No :77135-78-5

Grade :>95%

Formula :C₃₂H₂₀CoN₁₂

M.W. :631.51 g/mole



LT-D2019

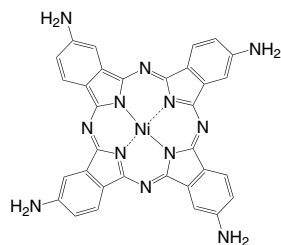
Nickel(II) 2,9,16,23-tetraamino-phthalocyanine

CAS No :27680-33-7

Grade :>95%

Formula :C₃₂H₂₀N₁₂Ni

M.W. :631.27 g/mole



LT-D2020

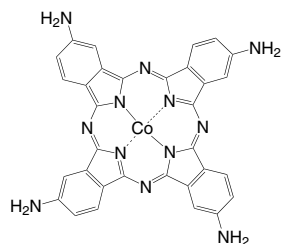
Cobalt(II) 2,9,16,23-tetraamino-phthalocyanine

CAS No :203860-42-8

Grade :>95%

Formula :C₃₂H₂₀CoN₁₂

M.W. :631.51 g/mole



LT-D2021

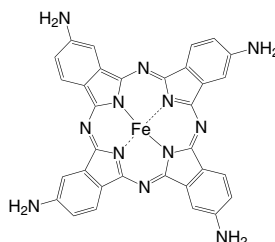
Iron(II) 2,9,16,23-tetraamino-phthalocyanine

CAS No :95100-27-9

Grade :>95%

Formula :C₃₂H₂₀FeN₁₂

M.W. :628.43 g/mole



LT-D2022

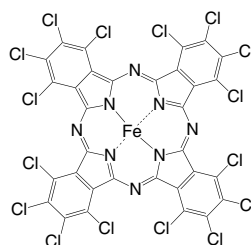
Iron(II) 1,2,3,4,8,9,10,11,15,16,17,18,22,23,24,25-hexadachloro-phthalocyanine

CAS No :50662-67-4

Grade :>95%

Formula :C₃₂Cl₁₆FeN₈

M.W. :1119.49 g/mole



LT-D2023 F16CoPc

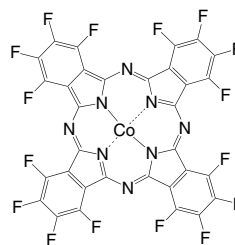
Cobalt(II) 1,2,3,4,8,9,10,11,15,16,17,18,22,23,24,25-hexadecafluoro-phthalocyanine

CAS No :52629-20-6

Grade :>95%

Formula :C₃₂CoF₁₆N₈

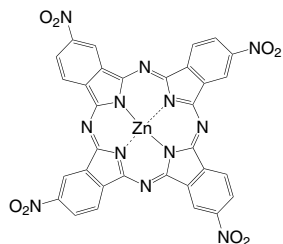
M.W. :859.3 g/mole



LT-D2024

Zinc(II) 2,9,16,23-tetranitro-phthalocyanine

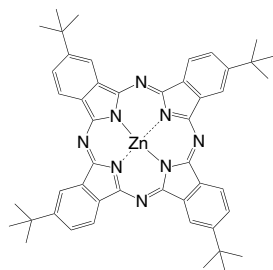
CAS No :100043-01-4
 Grade :>95%
 Formula : $C_{32}H_{12}N_{12}O_8Zn$
 M.W. :757.89 g/mole



LT-D2025

Zinc(II) 2,9,16,23-tetra(t-butyl)phthalocyanine

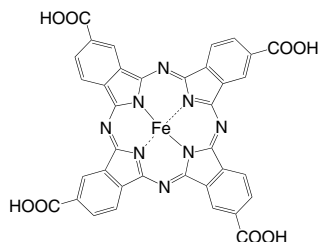
CAS No :39001-65-5
 Grade :>95%
 Formula : $C_{48}H_{48}N_8Zn$
 M.W. :802.33 g/mole



LT-D2026

Iron(III) 2,9,16,23-tetracarboxy-phthalocyanine

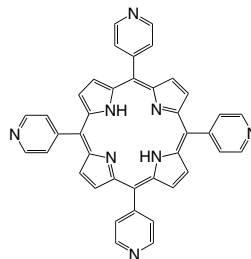
Grade :>95%
 Formula : $C_{36}H_{16}FeN_8O_8$
 M.W. :744.41 g/mole



LT-D0033 TPP

meso-Tetra(4-pyridyl)porphine

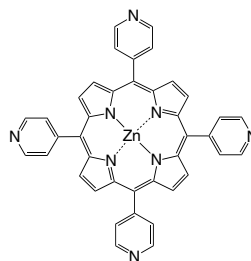
CAS No. :16834-13-2
 Grade :>98%
 Formula : $C_{40}H_{26}N_8$
 M.W. :618.69 g/mole
 Density :1.4±0.1 g/cm³



LT-D0034

Zinc(II) meso-tetra(4-pyridyl)porphine

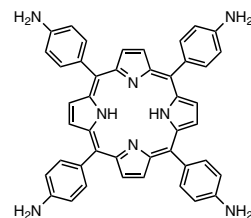
CAS No. :31183-11-6
 Grade :>98%
 Formula : $C_{40}H_{24}N_8Zn$
 M.W. :682.06 g/mole



LT-D0036 H2TAPP

meso-Tetra(4-aminophenyl)porphine

CAS No. :22112-84-1
 Grade :>98% (NMR)
 Formula : $C_{44}H_{24}N_8$
 M.W. :674.81 g/mole
 Storage :2~8 °C



LT-E003 | MoO₃

Molybdenum(VI) oxide

CAS No. :1313-27-5
 Grade :>99.998%
 Formula :MoO₃
 M.W. :143.94 g/mole

MoO₃**LT-EC001** | WO₃**NEW**

Tungsten(VI) oxide

CAS No. :1314-35-8
 Grade :>99.9%
 Formula :WO₃
 M.W. :231.84 g/mole

WO₃**LT-EC002** | Nb₂O₅**NEW**

Niobium(V) oxide

CAS No. :1313-96-8
 Grade :>99.9%
 Formula :Nb₂O₅
 M.W. :265.81 g/mole

Nb₂O₅**LT-EC003** | TiO₂**NEW**

Titanium(IV) Oxide

CAS No. :13463-67-7
 Grade :>99%
 Formula :TiO₂
 M.W. :79.87 g/mole

TiO₂**LT-EC004** | NiO**NEW**

Nickel(II) oxide

CAS No. :1313-99-1
 Grade :>99%
 Formula :NiO
 M.W. :74.69 g/mole

NiO

LT-EC005 | IrO₂**NEW**

Iridium(IV) Oxide

CAS No. :12030-49-8
 Grade :>99%
 Formula :IrO₂
 M.W. :224.22 g/mole

IrO₂**LT-EC006** | Fe₄[Fe(CN)₆]₃**NEW**

Iron(III) ferrocyanide

CAS No. :14038-43-8
 Formula :C₁₈Fe₇N₁₈
 M.W. :859.23 g/mole

Fe₄[Fe(CN)₆]₃**LT-EC007** | V₂O₅**NEW**

Vanadium(V) oxide

CAS No. :1314-62-1
 Grade :>99%
 Formula :V₂O₅
 M.W. :181.88 g/mole

V₂O₅**LT-EC008** | CoO**NEW**

Cobalt(II) oxide

CAS No. :1307-96-6
 Grade :>99.9%
 Formula :CoO
 M.W. :74.93 g/mole

CoO

LT-EC009 | Rh₂O₃**NEW**

Rhodium(III) oxide

CAS No. :12036-35-0
 Grade :>99.9%
 Formula :Rh₂O₃
 M.W. :253.81 g/mole

Rh₂O₃